

APP CRS	Rwy Idg	<b>3040</b>
<b>029°</b>	TDZE	<b>420</b>
	Apt Elev	<b>422</b>

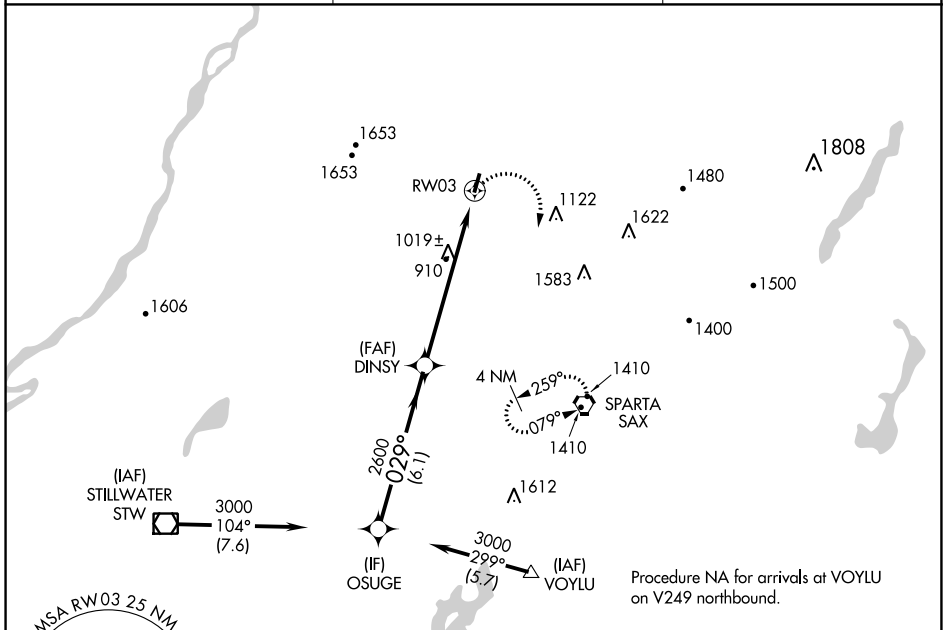
# RNAV (GPS) RWY 3

SUSSEX (F'WN)

**⚠** DME/DME RNP-0.3 NA. When local altimeter setting not received, use Teterboro altimeter setting and increase all MDA 140 feet; increase LNAV Cats A/B and Circling Cat B visibility ¼ mile and increase LNAV and Circling Cat C visibility ½ mile. Procedure NA at night. Helicopter visibility reduction below 1 SM NA.

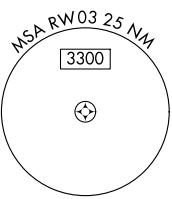
**MISSED APPROACH:** Climbing right turn to 3000 direct SAX VORTAC and hold.

ASOS <b>118.525</b>	NEWARK APP CON <b>127.6 379.9</b>	UNICOM <b>122.7 (CTAF) 0</b>
------------------------	--------------------------------------	---------------------------------

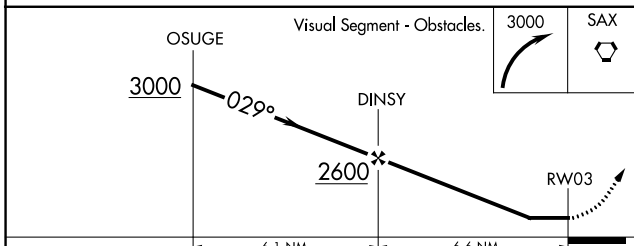
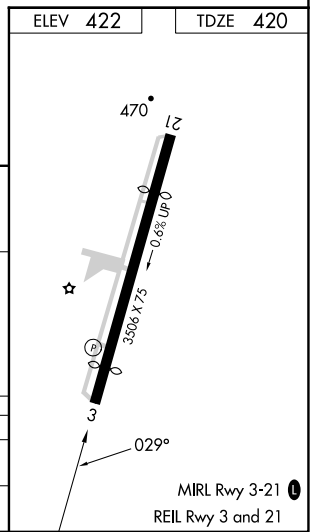


NE-2, 28 NOV 2024 to 26 DEC 2024

NE-2, 28 NOV 2024 to 26 DEC 2024



Procedure NA for arrivals at VOYLU on V249 northbound.



CATEGORY	A	B	C	D
LNAV MDA	1300-1 880 (900-1)	1300-1 ¼ 880 (900-1 ¼)	1300-2 ½ 880 (900-2 ½)	NA
<b>C</b> CIRCLING	1300-1 ¼	878 (900-1 ¼)	1300-2 ½ 878 (900-2 ½)	NA