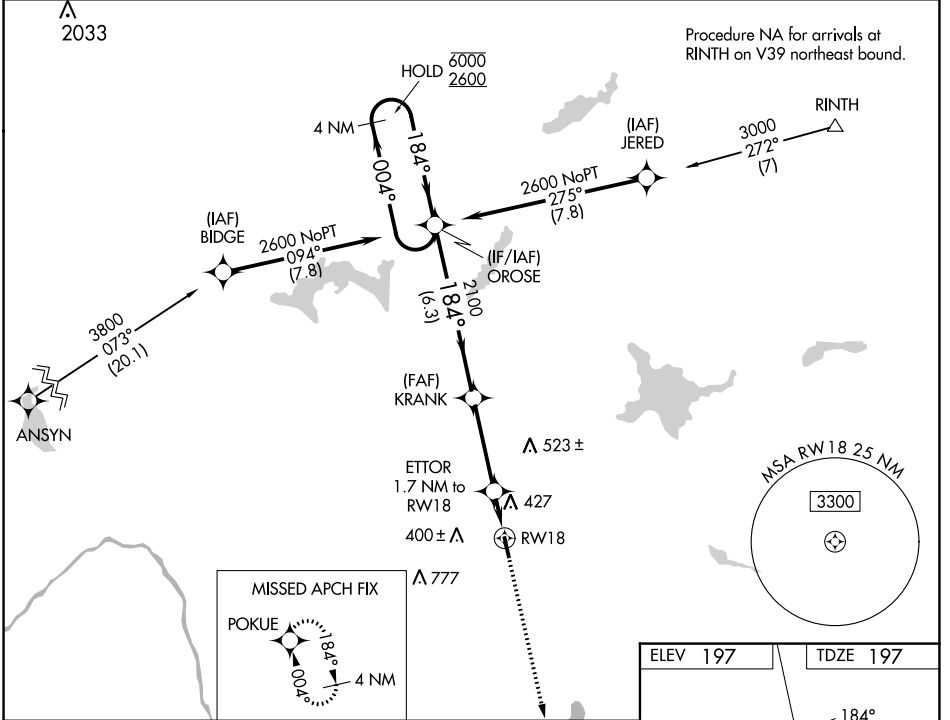


WAAS CH 53342 W18A	APP CRS 184°	Rwy Idg TDZE Apt Elev	4003 197 197
--	------------------------	-----------------------------	---

RNAV (GPS) RWY 18

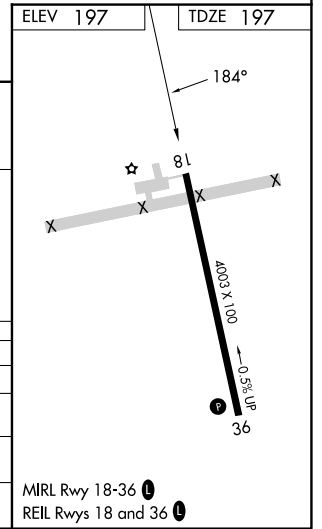
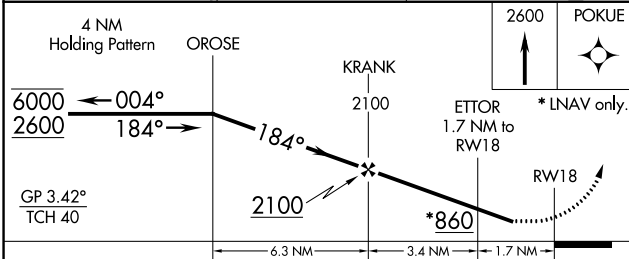
PITTSFIELD MUNI (2B7)

RNP APCH.		MISSED APPROACH: Climb to 2600 direct POKUE and hold.
V Rwy 18 helicopter visibility reduction below 3/4 SM NA. Use Bangor altimeter setting; when not received procedure NA.	NA	
BGR ASOS 127.75	BANGOR APP CON 118.925 239.3	UNICOM 122.8 (CTAF) 1



NE-1, 28 NOV 2024 to 26 DEC 2024

NE-1, 28 NOV 2024 to 26 DEC 2024



CATEGORY	A	B	C	D
LPV DA	610-1 1/8	413 (500-1 1/8)		NA
LNAV/VNAV DA	785-1 3/4	588 (600-1 3/4)		NA
LNAV MDA	740-1	543 (600-1)	740-1 5/8 543 (600-1 5/8)	NA
C CIRCLING	800-1	603 (700-1)	880-2 683 (700-2)	NA