

WAAS CH <b>90242</b> <b>W36A</b>	APP CRS <b>004°</b>	Rwy Idg TDZE Apt Elev	<b>4003</b> <b>194</b> <b>197</b>
--	------------------------	-----------------------------	---

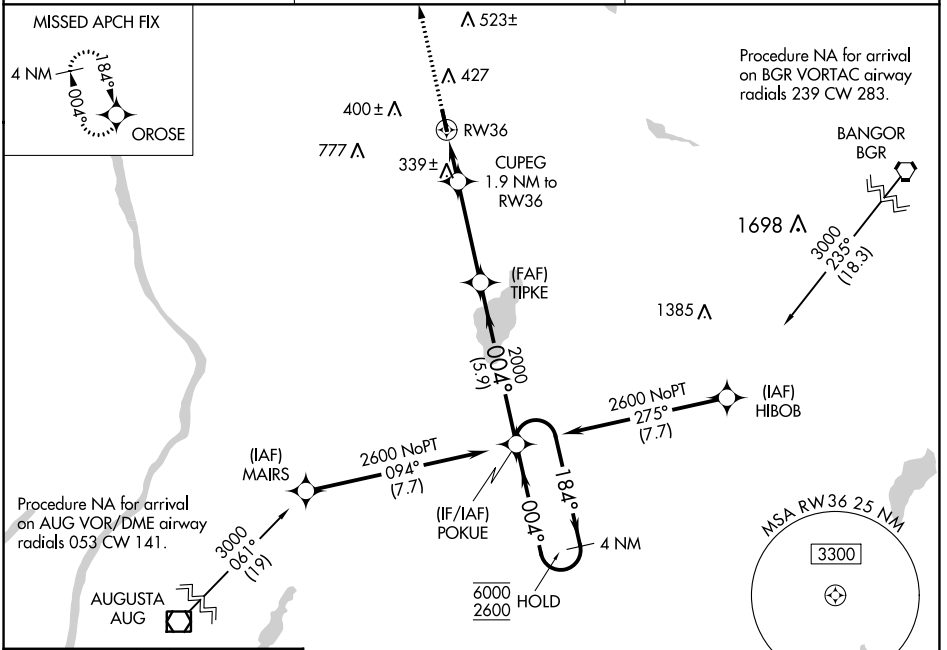
# RNAV (GPS) RWY 36

PITTSFIELD MUNI (2B7)

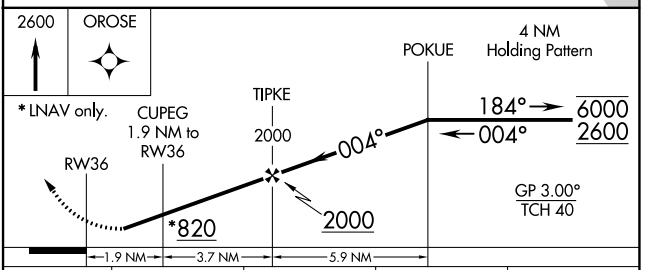
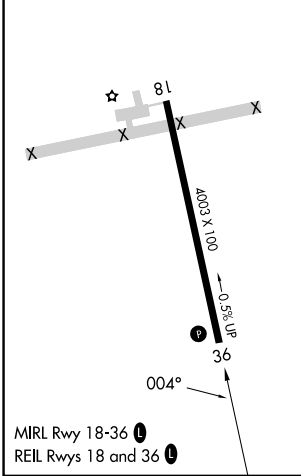
RNP APCH. MISSED APPROACH: Climb to 2600 direct OROSE and hold.

**▼** Rwy 36 helicopter visibility reduction below 3/4 SM NA.  
**▲** NA Baro-VNAV NA. Use Bangor altimeter setting; when not received procedure NA.

BGR ASOS <b>127.75</b>	BANGOR APP CON <b>118.925 239.3</b>	UNICOM <b>122.8 (CTAF)</b>
---------------------------	--	-------------------------------



ELEV 197	TDZE 194
----------	----------



CATEGORY	A	B	C	D
LPV DA	499-1 305 (400-1)			NA
LNAV/VNAV DA	499-1 305 (400-1)			NA
LNAV MDA	660-1	466 (500-1)	660-1 3/8 466 (500-1 3/8)	NA
<b>C</b> CIRCLING	800-1	603 (700-1)	880-2 683 (700-2)	NA

NE-1, 28 NOV 2024 to 26 DEC 2024

NE-1, 28 NOV 2024 to 26 DEC 2024