

LOC/DME I-SME <b>109.3</b> Chan <b>30</b>	APP CRS <b>048°</b>	Rwy Idg TDZE Apt Elev	<b>5287</b> <b>927</b> <b>927</b>
---	------------------------	-----------------------------	---

# ILS or LOC RWY 5

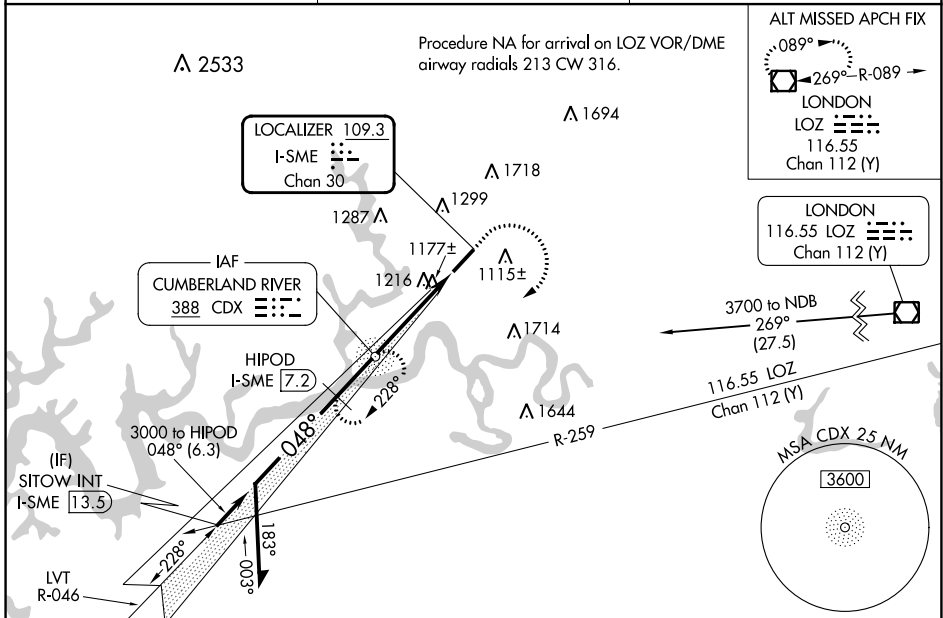
LAKE CUMBERLAND RGNL (SME)

DME required. ADF required.

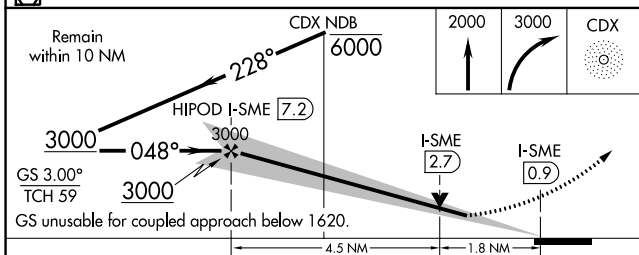
**⚠** Rwy 5 helicopter visibility reduction below 3/4 SM NA. When local altimeter setting not received, use Monticello altimeter setting and increase S-ILS 5 DA to 1526 feet and all visibilities 1/8 SM. Increase all MDAs 60 feet and S-LOC 5 visibility Cat C/D 1/8 SM, and Circling visibility Cat B 1/4 SM. VDP NA when using Monticello altimeter setting.

**MISSED APPROACH:** Climb to 2000 then climbing right turn to 3000 direct CDX NDB and hold, continue climb-in-hold to 3000.

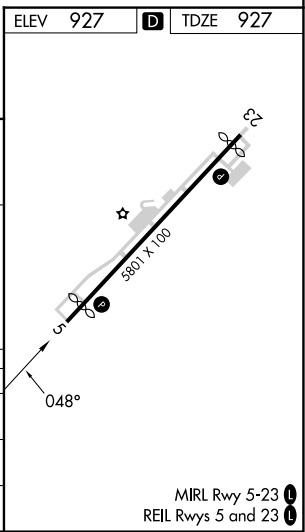
AWOS-3 <b>120.05</b>	INDIANAPOLIS CENTER <b>124.625 371.925</b>	UNICOM <b>122.8 (CTAF) 0</b>
-------------------------	---	---------------------------------



ELEV 927	D	TDZE 927
----------	---	----------



CATEGORY	A	B	C	D
S-ILS 5		1482-1 5/8	555 (600-1 5/8)	
S-LOC 5	1540-1	613 (700-1)	1540-1 3/4	613 (700-1 3/4)
CIRCLING	1620-1 693 (700-1)	1720-1 793 (800-1)	2100-3	1173 (1200-3)



SE-1, 28 NOV 2024 to 26 DEC 2024

SE-1, 28 NOV 2024 to 26 DEC 2024