

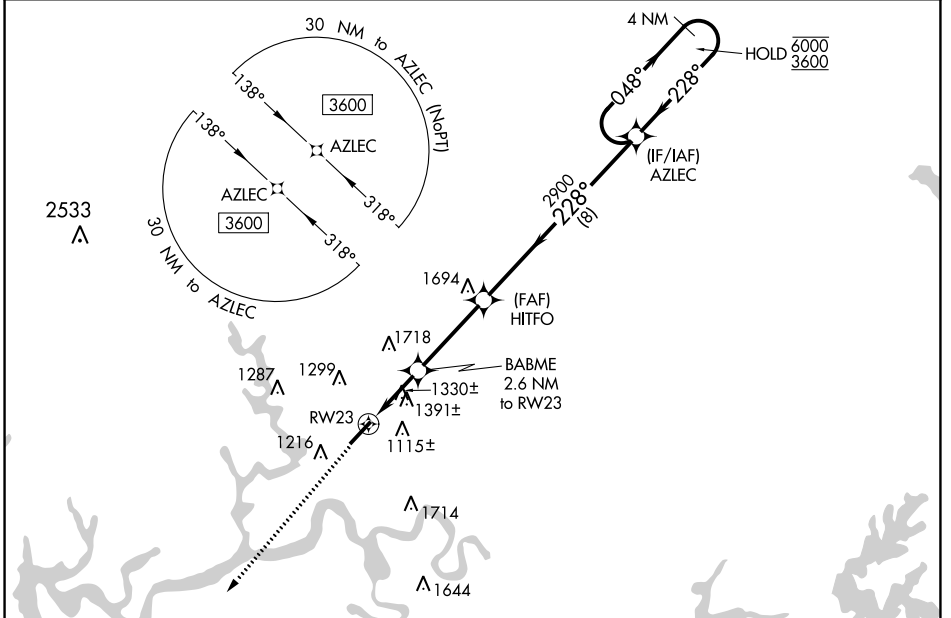
WAAS CH <b>53641</b> <b>W23A</b>	APP CRS <b>228°</b>	Rwy Idg TDZE Apt Elev	<b>5500</b> <b>927</b> <b>927</b>
--	------------------------	-----------------------------	---

# RNAV (GPS) RWY 23

LAKE CUMBERLAND RGNL (SME)

RNP APCH - GPS.	<p><b>⚠</b> Rwy 23 helicopter visibility reduction below 3/4 SM NA. When local altimeter setting not received, use Monticello altimeter setting and increase all MDAs 60 feet and LNAV visibility Cat B/C/D 1/2 SM, and LP visibility Cat C/D 1/8 SM, and Circling visibility Cat B 1/4 SM. VDP NA when using Monticello altimeter setting.</p>	MISSED APPROACH: Climb to 3600 direct TOOLY and hold.
-----------------	---	---

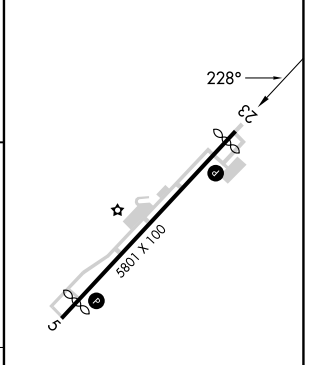
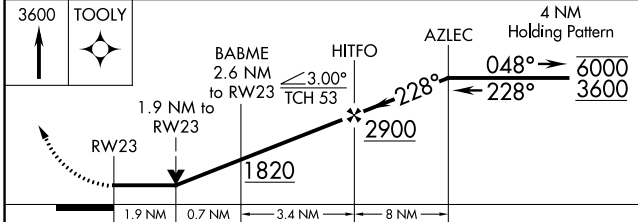
AWOS-3 <b>120.05</b>	INDIANAPOLIS CENTER <b>124.625 371.925</b>	UNICOM <b>122.8 (CTAF)</b> <b>📶</b>
-------------------------	---	--



SE-1, 28 NOV 2024 to 26 DEC 2024

SE-1, 28 NOV 2024 to 26 DEC 2024

ELEV 927	<b>D</b> TDZE 927
----------	-------------------



CATEGORY	A	B	C	D
LP MDA	1580-1	653 (700-1)	1580-1 7/8	653 (700-1 7/8)
LNAV MDA	1660-1	733 (800-1)	1660-2	733 (800-2)
CIRCLING	1660-1 733 (800-1)	1700-1 773 (800-1)	2100-3	1173 (1200-3)

MIRL Rwy 5-23 **📶**  
REIL Rwy 5 and 23 **📶**