

WAAS CH 81932 W12A	APP CRS 125°	Rwy Idg TDZE Apt Elev	4257 1060 1060
--	------------------------	-----------------------------	---

RNAV (GPS) RWY 12

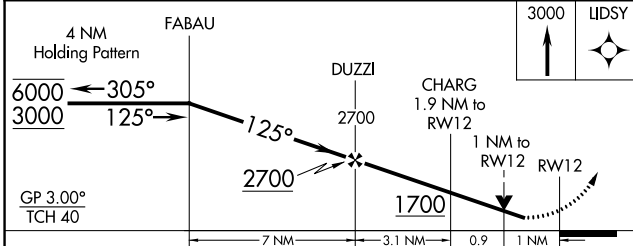
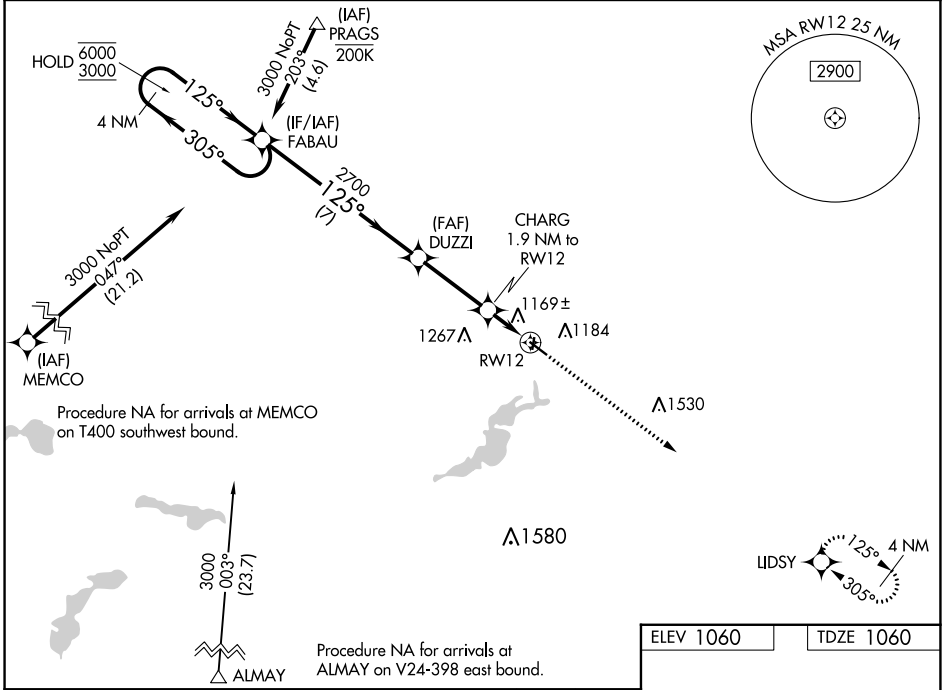
FARIBAULT MUNI-LIZ WALL STROHFUS FLD (F'BL)

RNP APCH - GPS.

⚠ Circling NA to Rwys 1 and 19. Rwy 12 helicopter visibility reduction below 3/4 SM NA. For uncompensated Baro-VNAV systems, LNAV/VNAV NA below -17°C or above 54°C.

MISSED APPROACH: Climb to 3000 direct LIDSY and hold.

AWOS-3 120.2	MINNEAPOLIS APP CON 134.7 284.7	GCO 121.725	UNICOM 122.8 (CTAF) 0
------------------------	---	-----------------------	---------------------------------



ELEV 1060	TDZE 1060
-----------	-----------

REIL Rwys 12 and 30 0

MIRL Rwy 12-30 0

CATEGORY	A	B	C	D
LPV DA	1310-1	250 (300-1)		NA
LNAV/VNAV DA	1339-1	279 (300-1)		NA
LNAV MDA	1420-1	360 (400-1)		NA
CIRCLING	1520-1	460 (500-1)	1740-2 680 (700-2)	NA

NC-1, 28 NOV 2024 to 26 DEC 2024

NC-1, 28 NOV 2024 to 26 DEC 2024