

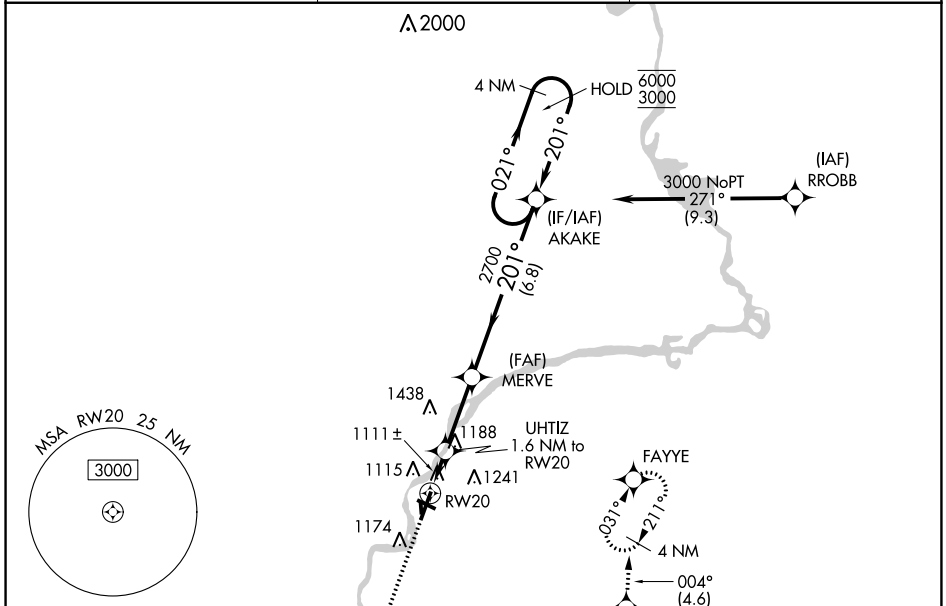
APP CRS	Rwy Idg	5500
201°	TDZE	1021
	Apt Elev	1021

RNAV (GPS) RWY 20

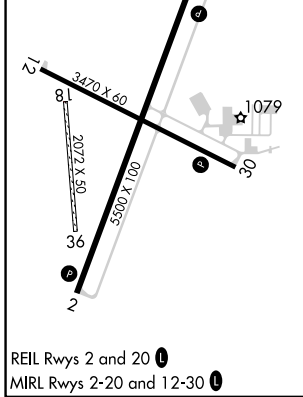
ALEXANDER FLD SOUTH WOOD COUNTY (ISW)

RNP APCH.	MISSED APPROACH: Climb to 3000 direct WEMUG and on track 117° to OCEDE and on track 049° to LHALL and on track 004° to FAYYE and hold.
<p>▼ Circling NA to Rwy 18 and 36.</p> <p>▲ Rwy 20 helicopter visibility reduction below 1 SM NA.</p> <p>▲ Straight-in Rwy 20 NA at night, Circling Rwy 20, 30 NA at night.</p>	

ASOS 126.575	MINNEAPOLIS CENTER 124.4 317.7	UNICOM 122.8 (CTAF)
------------------------	--	-------------------------------



ELEV 1021	TDZE 1021



3000	WEMUG	tr 117°	OCEDE	tr 049°	LHALL	tr 004°	FAYYE	4 NM Holding Pattern
	UHTIZ	MERVE	AKAKE					
	1.6 NM to RW20							
	≤ 3.50° TCH 42							
	1640	2700						
	1.6 NM	2.8 NM	6.8 NM					
CATEGORY	A	B	C	D				
LNAV MDA	1380-1		359 (400-1)					
CIRCLING	1480-1 459 (500-1)	1560-1 539 (600-1)	1620-1½ 599 (600-1½)	1800-2½ 779 (800-2½)				

EC-3, 28 NOV 2024 to 26 DEC 2024

EC-3, 28 NOV 2024 to 26 DEC 2024