

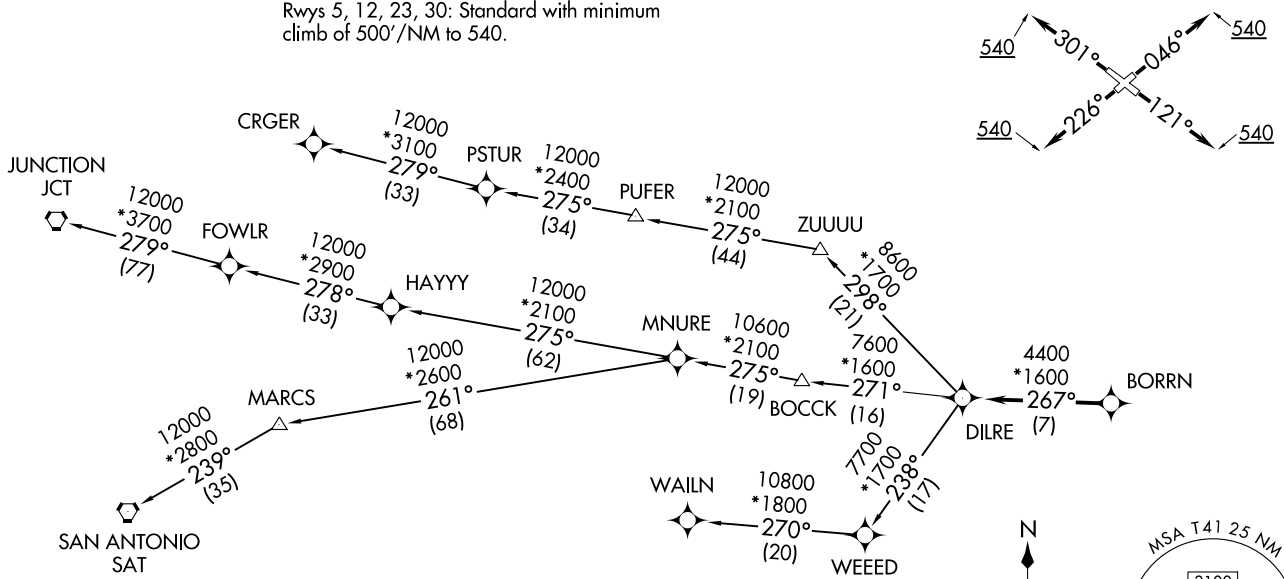
RNAV 1 - DME/DME/IRU or GPS.

RADAR required.

**TOP ALTITUDE:
ASSIGNED BY ATC**

TAKEOFF MINIMUMS

Rwys 5, 12, 23, 30: Standard with minimum climb of 500'/NM to 540.



NOTE: CRGER-TRANSITION ATC assigned only for aircraft departing 54T, AXH, EFD, GLS, HPY, IWS, LBX, LVJ, SGR, TME, T00, T41.

(NARRATIVE ON FOLLOWING PAGE)

NOTE: Chart not to scale.

BORRN SIX DEPARTURE (RNAV)
(BORRN6.BORRN) 30NOV23

LA PORTE, TEXAS
LA PORTE MUNI (T41)

(BORRN6.BORRN) 23334
BORRN SIX DEPARTURE (RNAV)

AI-5433 (FAA)

LA PORTE MUNI (T41)
LA PORTE, TEXAS

BORRN SIX DEPARTURE (RNAV)



DEPARTURE ROUTE DESCRIPTION

TAKEOFF RUNWAY 5: Climb on heading 046° to 540, for RADAR vectors to BORRN, thence. . . .

TAKEOFF RUNWAY 12: Climb on heading 121° to 540, for RADAR vectors to BORRN, thence. . . .

TAKEOFF RUNWAY 23: Climb on heading 226° to 540, for RADAR vectors to BORRN, thence. . . .

TAKEOFF RUNWAY 30: Climb on heading 301° to 540, for RADAR vectors to BORRN, thence. . . .

. . . .on track 267° to DILRE, then on (transition). Maintain ATC assigned altitude. Expect filed altitude 10 minutes after departure.

CRGER TRANSITION (BORRN6.CRGER)

JUNCTION TRANSITION (BORRN6.JCT)

MNURE TRANSITION (BORRN6.MNURE)

SAN ANTONIO TRANSITION (BORRN6.SAT)

WAILN TRANSITION (BORRN6.WAILN)

SC-5, 28 NOV 2024 to 26 DEC 2024

SC-5, 28 NOV 2024 to 26 DEC 2024