

GIFFA ONE DEPARTURE

AL-5433 (FAA)

LA PORTE MUNI (T41)

LA PORTE, TEXAS

CLNC DEL
 125.6
 CTAF
 122.7
 HOUSTON DEP CON
 134.45 284.0

**TOP ALTITUDE:
ASSIGNED BY ATC**

NOTE: RADAR required.
 NOTE: For aircraft destined for the DFW
 terminal area only.

LEONA
 110.8 LOA
 Chan 45

CEDAR CREEK
 114.8 CQY
 Chan 95

DAISETTA
 116.9 DAS
 Chan 116

HUMBLE
 116.6 IAH
 Chan 113

TAKEOFF MINIMUMS

Rwys 5, 12, 23, 30: Standard.

(CONTINUED ON FOLLOWING PAGE)

NOTE: Chart not to scale.

GIFFA ONE DEPARTURE

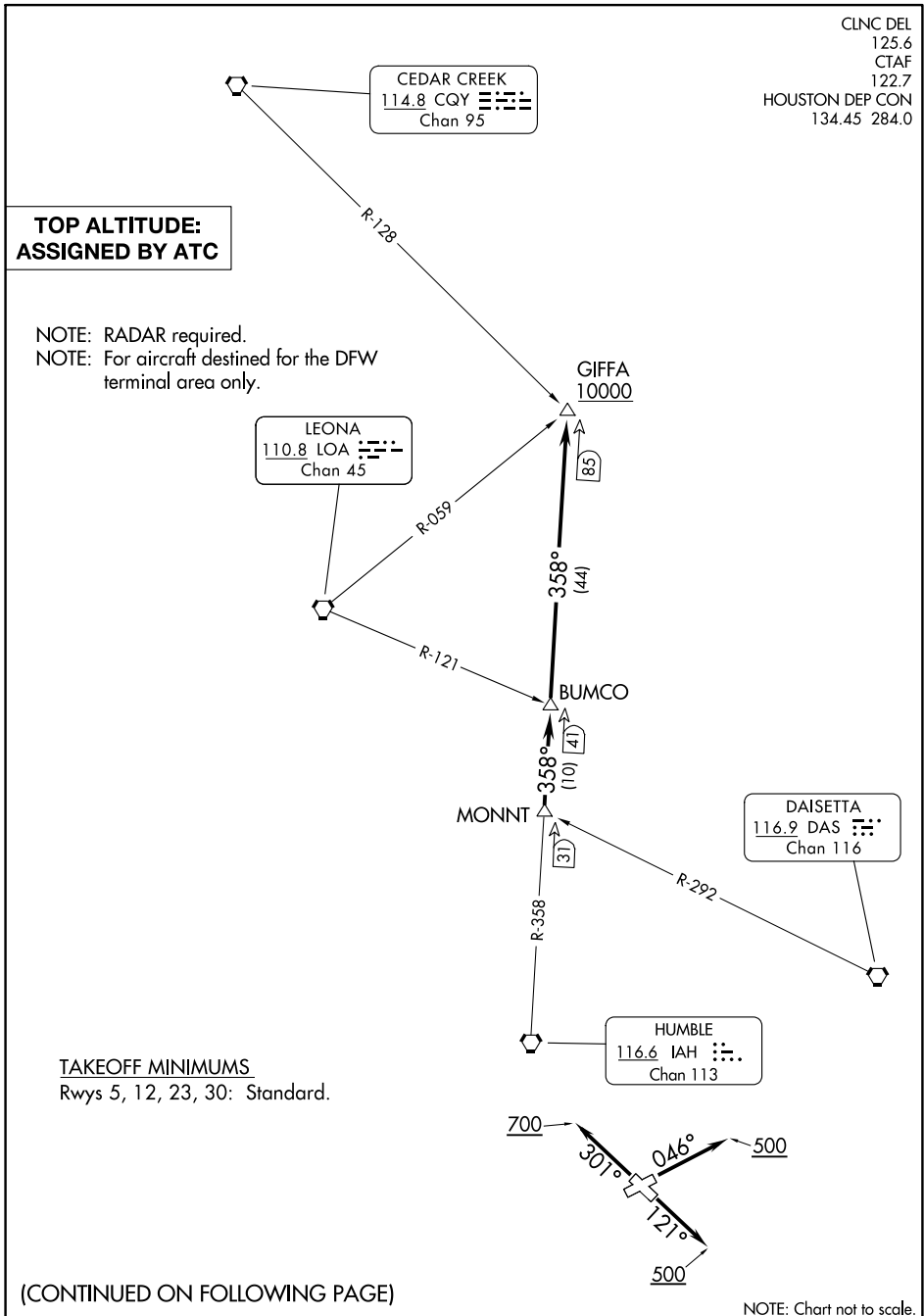
(GIFFA1.GIFFA) 07OCT21

LA PORTE, TEXAS

LA PORTE MUNI (T41)

SC-5, 28 NOV 2024 to 26 DEC 2024

SC-5, 28 NOV 2024 to 26 DEC 2024





DEPARTURE ROUTE DESCRIPTION

TAKEOFF RUNWAY 5: Climb on heading 046° to 500 before turning. When entering controlled airspace, climb on assigned heading for RADAR vectors to MONNT INT. Maintain ATC assigned altitude. Expect filed altitude 10 minutes after departure, thence. . . .

TAKEOFF RUNWAY 12: Climb on heading 121° to 500 before turning. When entering controlled airspace, climb on assigned heading for RADAR vectors to MONNT INT. Maintain ATC assigned altitude. Expect filed altitude 10 minutes after departure, thence. . . .

TAKEOFF RUNWAY 23: When entering controlled airspace, climb on assigned heading for RADAR vectors to MONNT INT. Maintain ATC assigned altitude. Expect filed altitude 10 minutes after departure, thence. . . .

TAKEOFF RUNWAY 30: Climb on heading 301° to 700 before turning. When entering controlled airspace, climb on assigned heading for RADAR vectors to MONNT INT. Maintain ATC assigned altitude. Expect filed altitude 10 minutes after departure, thence. . . .

. . . . on IAH R-358 to cross GIFFA INT at or above 10000.

SC-5, 28 NOV 2024 to 26 DEC 2024

SC-5, 28 NOV 2024 to 26 DEC 2024