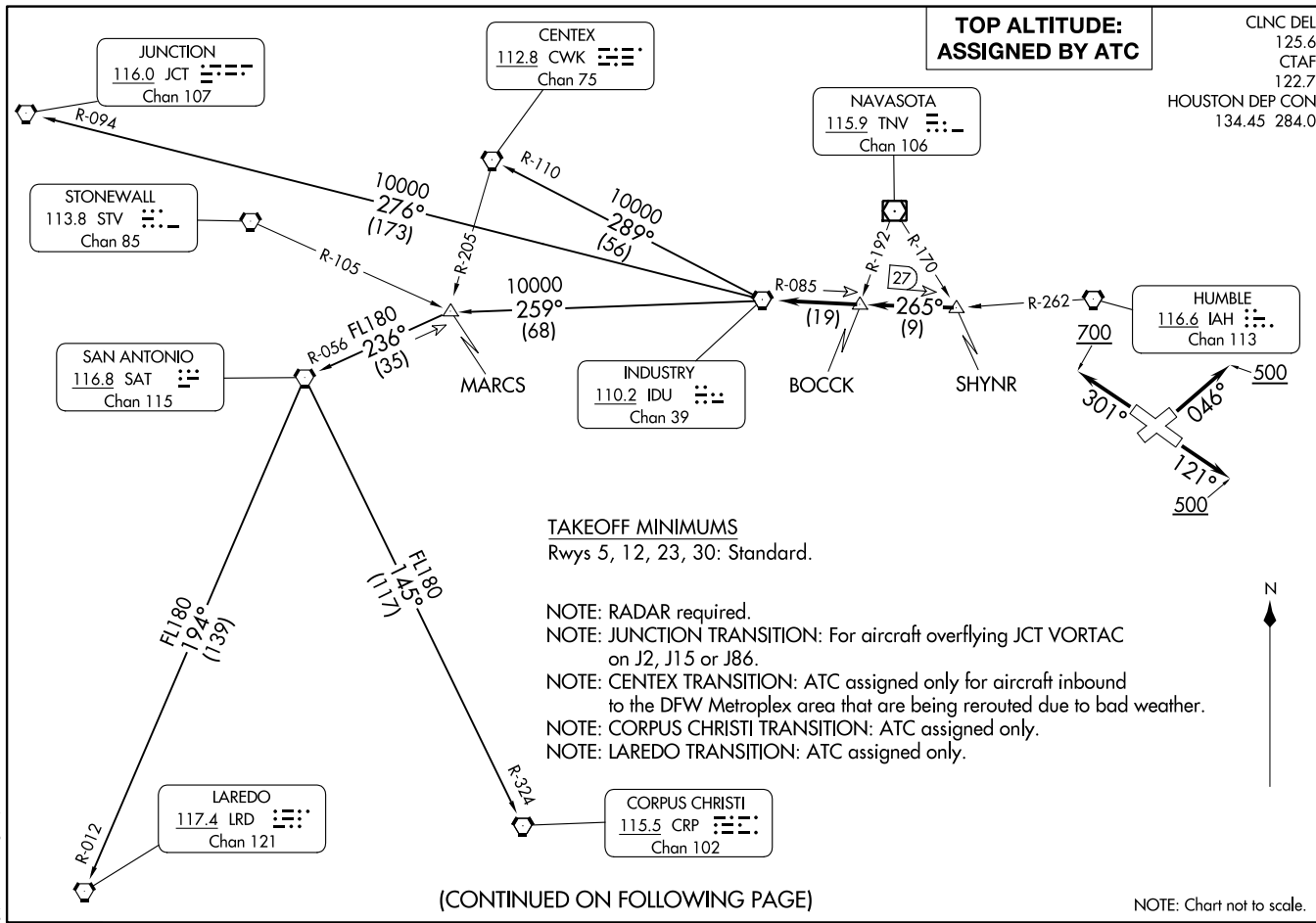


INDUSTRY ONE DEPARTURE  
(IDU1, IDU) 07OCT21

LA PORTE, TEXAS  
LA PORTE MUNI (T41)



CLNC DEL 125.6  
CTAF 122.7  
HOUSTON DEP CON 134.45 284.0

INDUSTRY ONE DEPARTURE  
(IDU1, IDU) 24137

AL-5433 (FAA)

LA PORTE MUNI (T41)  
LA PORTE, TEXAS

**TAKEOFF MINIMUMS**  
Rwys 5, 12, 23, 30: Standard.

- NOTE: RADAR required.
- NOTE: JUNCTION TRANSITION: For aircraft overflying JCT VORTAC on J2, J15 or J86.
- NOTE: CENTEX TRANSITION: ATC assigned only for aircraft inbound to the DFW Metroplex area that are being rerouted due to bad weather.
- NOTE: CORPUS CHRISTI TRANSITION: ATC assigned only.
- NOTE: LAREDO TRANSITION: ATC assigned only.

(CONTINUED ON FOLLOWING PAGE)

NOTE: Chart not to scale.



DEPARTURE ROUTE DESCRIPTION

TAKEOFF RUNWAY 5: Climb on heading 046° to 500 before turning. When entering controlled airspace, climb on assigned heading for RADAR vectors to SHYNR INT. Maintain ATC assigned altitude. Expect filed altitude 10 minutes after departure, thence . . . .

TAKEOFF RUNWAY 12: Climb on heading 121° to 500 before turning. When entering controlled airspace, climb on assigned heading for RADAR vectors to SHYNR INT. Maintain ATC assigned altitude. Expect filed altitude 10 minutes after departure, thence . . . .

TAKEOFF RUNWAY 23: When entering controlled airspace, climb on assigned heading for RADAR vectors to SHYNR INT. Maintain ATC assigned altitude. Expect filed altitude 10 minutes after departure, thence . . . .

TAKEOFF RUNWAY 30: Climb on heading 301° to 700 before turning. When entering controlled airspace, climb on assigned heading for RADAR vectors to SHYNR INT. Maintain ATC assigned altitude. Expect filed altitude 10 minutes after departure, thence . . . .

. . . . on IDU R-085 to BOCCK INT, then on IDU R-085 to IDU VORTAC.

CENTEX TRANSITION (IDU1.CWK): From over IDU VORTAC on IDU R-289 and CWK R-110 to CWK VORTAC.

CORPUS CHRISTI TRANSITION (IDU1.CRP): From over IDU VORTAC on IDU R-259 to MARCS INT, then on SAT R-056 to SAT VORTAC, then on SAT R-145 and CRP R-324 to CRP VORTAC.

JUNCTION TRANSITION (IDU1.JCT): From over IDU VORTAC on IDU R-276 and JCT R-094 to JCT VORTAC.

LAREDO TRANSITION (IDU1.LRD): From over IDU VORTAC on IDU R-259 to MARCS INT, then on SAT R-056 to SAT VORTAC, then on SAT R-194 and LRD R-012 to LRD VORTAC.

SC-5, 28 NOV 2024 to 26 DEC 2024

SC-5, 28 NOV 2024 to 26 DEC 2024