

KARRR SEVEN DEPARTURE (RNAV)
(KARRR7 .KARRR) 29DEC22

CTAF
122.7
CLNC DEL
125.6
HOUSTON DEP CON
134.45 284.0

RNAV-1 DME/DME/IRU or GPS.
RADAR required.

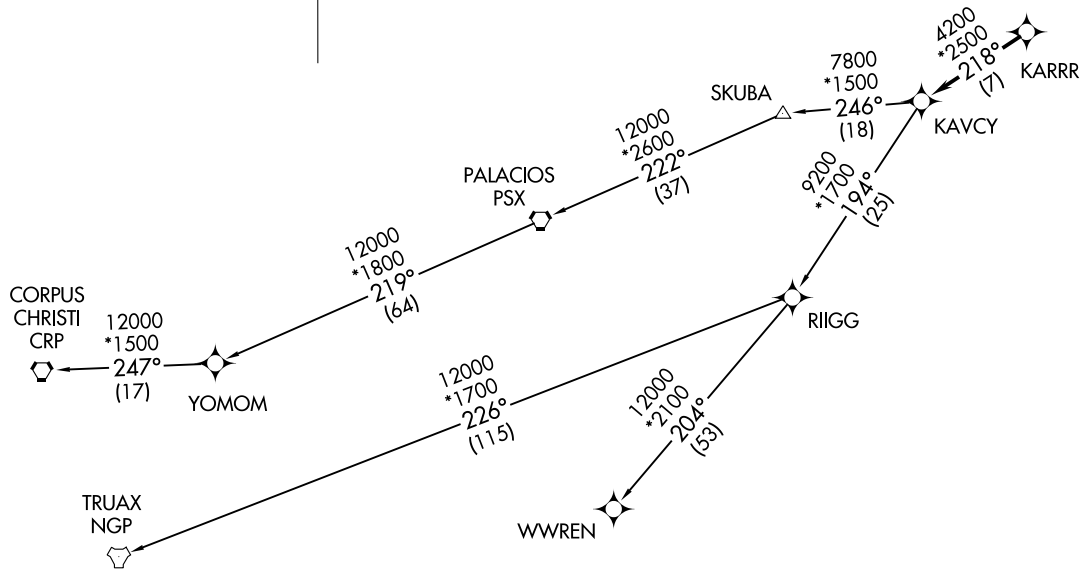
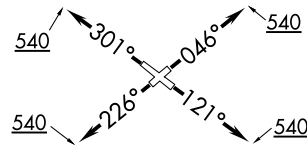
TOP ALTITUDE:
ASSIGNED BY ATC



TAKEOFF MINIMUMS

Rwys 5, 12, 23, 30:

Standard with minimum climb of 500' per NM to 540.



(NARRATIVE ON FOLLOWING PAGE)

NOTE: Chart not to scale.

LA PORTE, TEXAS
LA PORTE MUNI (T11)

(KARRR7 .KARRR) 22633
KARRR SEVEN DEPARTURE (RNAV)

AL-5433 (FAA)

LA PORTE MUNI (T11)
LA PORTE, TEXAS

KARRR SEVEN DEPARTURE (RNAV)



DEPARTURE ROUTE DESCRIPTION

TAKEOFF RUNWAY 5: Climb on heading 046° to 540, for RADAR vectors to KARRR, thence. . . .

TAKEOFF RUNWAY 12: Climb on heading 121° to 540, for RADAR vectors to KARRR, thence. . . .

TAKEOFF RUNWAY 23: Climb on heading 226° to 540, for RADAR vectors to KARRR, thence. . . .

TAKEOFF RUNWAY 30: Climb on heading 301° to 540, for RADAR vectors to KARRR, thence. . . .

. . . .on track 218° to KAVCY, then on (transition). Maintain ATC assigned altitude. Expect filed altitude 10 minutes after departure.

CORPUS CHRISTI TRANSITION (KARRR7.CRP)

PALACIOS TRANSITION (KARRR7.PSX)

TRUAX TRANSITION (KARRR7.NGP)

WWREN TRANSITION (KARRR7.WWREN)

YOMOM TRANSITION (KARRR7.YOMOM)

SC-5, 28 NOV 2024 to 26 DEC 2024

SC-5, 28 NOV 2024 to 26 DEC 2024