

# WYLSN EIGHT DEPARTURE (RNAV)

CLNC DEL  
125.6  
CTAF  
122.7  
HOUSTON DEP CON  
134.45 284.0

**TOP ALTITUDE:  
ASSIGNED BY ATC**

NOTE: RADAR required.  
NOTE: DME/DME/IRU or GPS required.  
NOTE: RNAV 1.

### TAKEOFF MINIMUMS

Rwys 5, 12, 23, 30: Standard with minimum climb of 500' per NM to 540.

### DEPARTURE ROUTE DESCRIPTION

TAKEOFF RUNWAY 5: Climb on heading 046° to 540 for RADAR vectors to WYLSN, thence. . . .

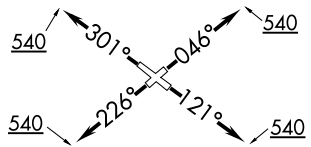
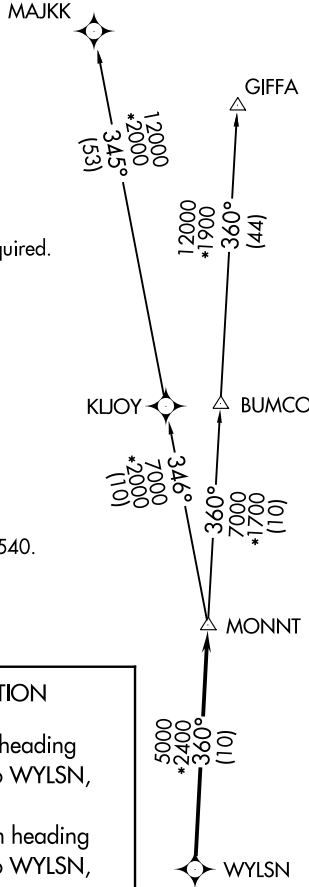
TAKEOFF RUNWAY 12: Climb on heading 121° to 540 for RADAR vectors to WYLSN, thence. . . .

TAKEOFF RUNWAY 23: Climb on heading 226° to 540 for RADAR vectors to WYLSN, thence. . . .

TAKEOFF RUNWAY 30: Climb on heading 301° to 540 for RADAR vectors to WYLSN, thence. . . .

. . . .on track 360° to MONNT, then on (transition). Maintain ATC assigned altitude. Expect filed altitude 10 minutes after departure.

GIFFA TRANSITION (WYLSN8.GIFFA)  
MAJJK TRANSITION (WYLSN8.MAJJK)



NOTE: Chart not to scale.

# WYLSN EIGHT DEPARTURE (RNAV)

SC-5, 28 NOV 2024 to 26 DEC 2024

SC-5, 28 NOV 2024 to 26 DEC 2024