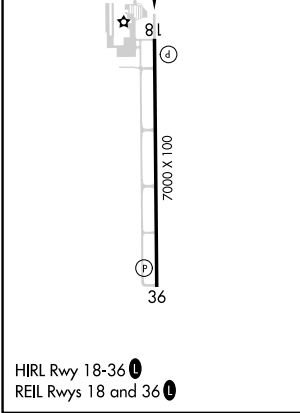
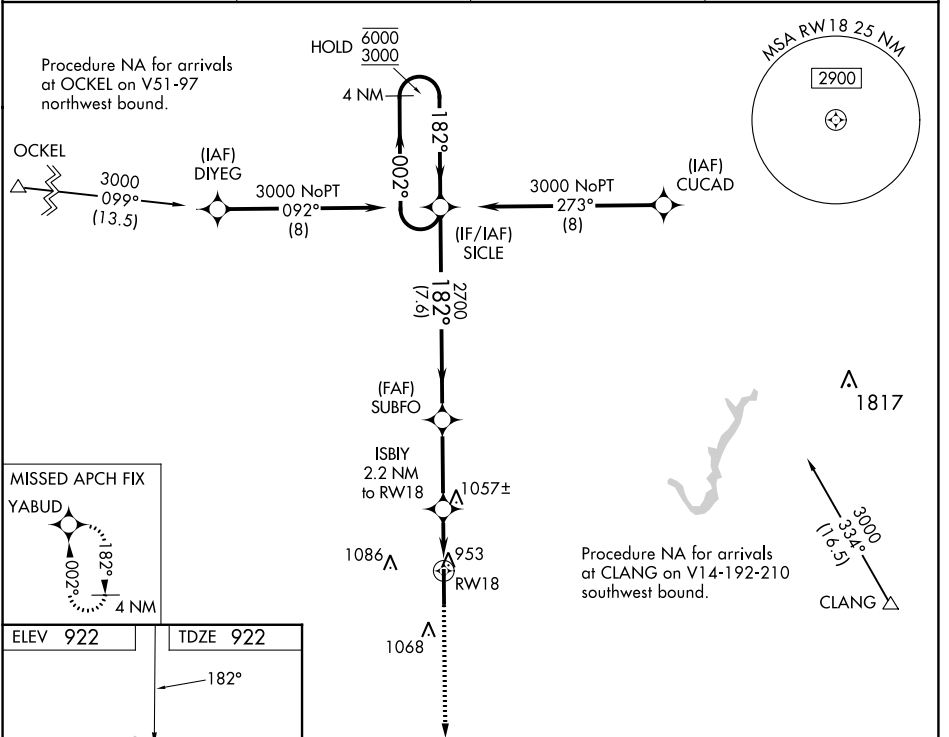


APP CRS 182°	Rwy Idg 7000
	TDZE 922
	Apt Elev 922

RNAV (GPS) RWY 18

INDIANAPOLIS EXEC (TYQ)

RNP APCH - GPS.		MISSED APPROACH: Climb to 3000 direct YABUD and hold.	
<p>▼ Rwy 18 helicopter visibility reduction below 3/4 SM NA. For uncompensated Baro-VNAV systems, LNAV/VNAV NA below -16°C or above 54°C.</p>		AWOS-3PT 120.725	INDIANAPOLIS APP CON 124.65 127.15 317.8
		CLNC DEL 118.175	UNICOM 123.05 (CTAF)



CATEGORY	A	B	C	D
LNAV/VNAV DA	1216-7/8		294 (300-7/8)	
LNAV MDA	1320-1	398 (400-1)	1320-1 1/8	398 (400-1 1/8)
C CIRCLING	1380-1	458 (500-1)	1440-1 1/2 518 (600-1 1/2)	1480-2 558 (600-2)

EC-2, 28 NOV 2024 to 26 DEC 2024

EC-2, 28 NOV 2024 to 26 DEC 2024