

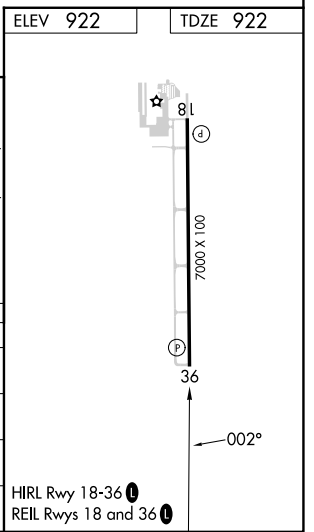
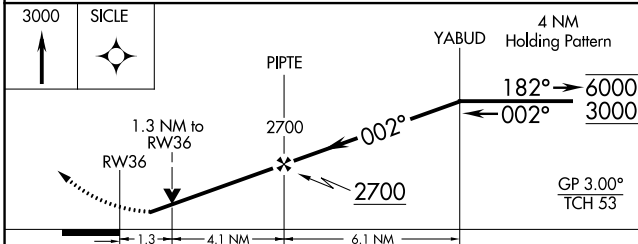
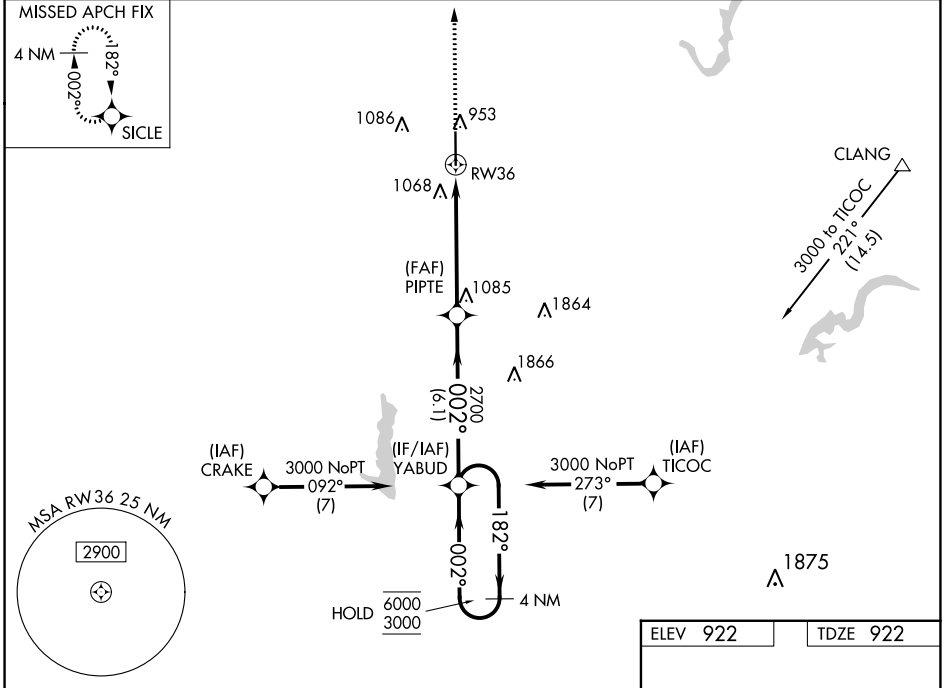
WAAS CH 53599 W36A	APP CRS 002°	Rwy Idg 7000 TDZE 922 Apt Elev 922
--	------------------------	---

RNAV (GPS) RWY 36

INDIANAPOLIS EXEC (TYQ)

RNP APCH - GPS.	MISSED APPROACH: Climb to 3000 direct SICLE and hold.
<p>▼ Rwy 36 helicopter visibility reduction below 3/4 SM NA. For uncompensated Baro-VNAV systems, LNAV/VNAV NA below -16°C or above 54°C.</p>	

AWOS-3PT 120.725	INDIANAPOLIS APP CON 124.65 127.15 317.8	CLNC DEL 118.175	UNICOM 123.05 (CTAF)
----------------------------	--	----------------------------	--------------------------------



CATEGORY	A	B	C	D
LPV DA	1199-7/8		277 (300-7/8)	
LNAV/VNAV DA	1351-1 1/4		429 (500-1 1/4)	
LNAV MDA	1400-1	478 (500-1)	1400-1 3/8	478 (500-1 3/8)
CIRCLING	1400-1	478 (500-1)	1440-1 1/2 518 (600-1 1/2)	1480-2 558 (600-2)

EC-2, 28 NOV 2024 to 26 DEC 2024

EC-2, 28 NOV 2024 to 26 DEC 2024