

VORTAC VHP <b>116.3</b> Chan <b>110</b>	APP CRS <b>201°</b>	Rwy Idg <b>7000</b> TDZE <b>922</b> Apt Elev <b>922</b>
---	------------------------	---

# VOR RWY 18

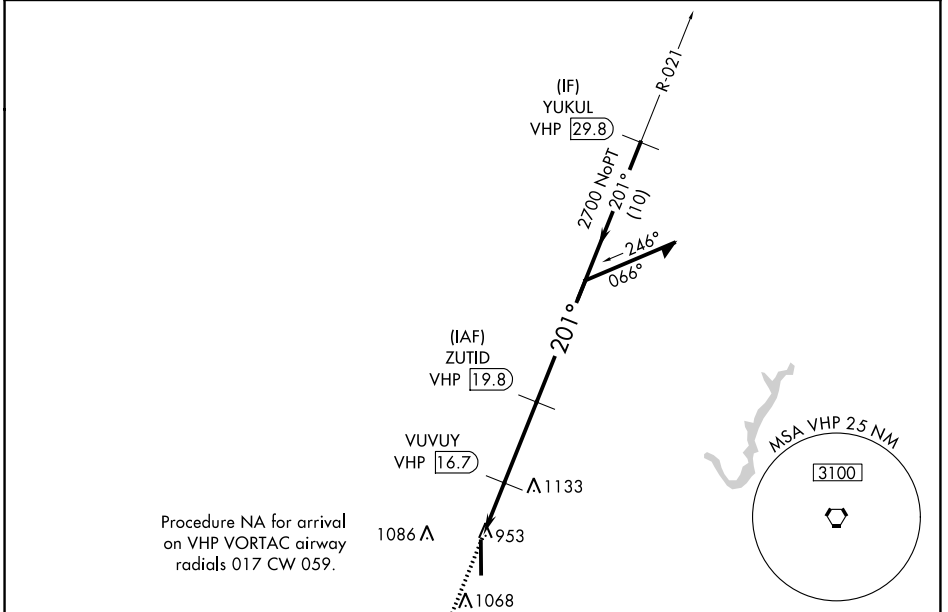
INDIANAPOLIS EXEC (TYQ)

DME required.

**▼** MISSED APPROACH: Climb to 2700 direct VHP VORTAC and hold.

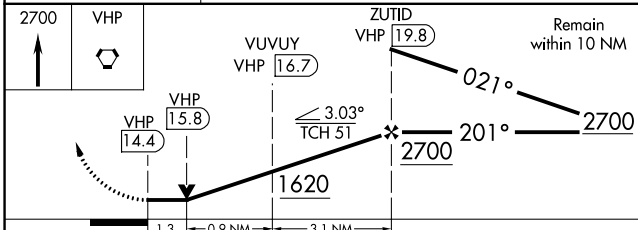
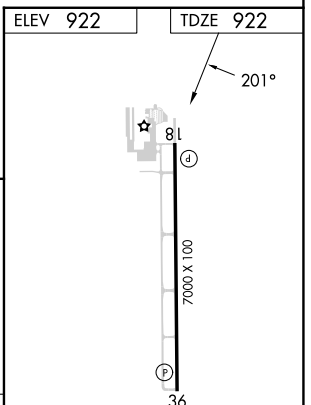
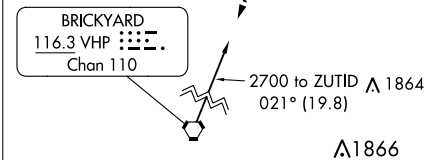
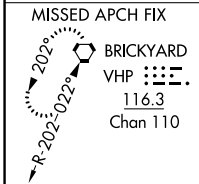
**▲** Rwy 18 helicopter visibility reduction below 3/4 SM NA.

AWOS-3PT <b>120.725</b>	INDIANAPOLIS APP CON <b>124.65 127.15 317.8</b>	CLNC DEL <b>118.175</b>	UNICOM <b>123.05 (CTAF) ①</b>
----------------------------	--	----------------------------	----------------------------------



EC-2, 28 NOV 2024 to 26 DEC 2024

EC-2, 28 NOV 2024 to 26 DEC 2024



CATEGORY	A	B	C	D
S-18	1400-1	478 (500-1)	1400-1 3/8	478 (500-1 3/8)
<b>C</b> CIRCLING	1400-1	478 (500-1)	1440-1 1/2 518 (600-1 1/2)	1480-2 558 (600-2)

HIRL Rwy 18-36 ①  
REIL Rwsy 18 and 36 ①