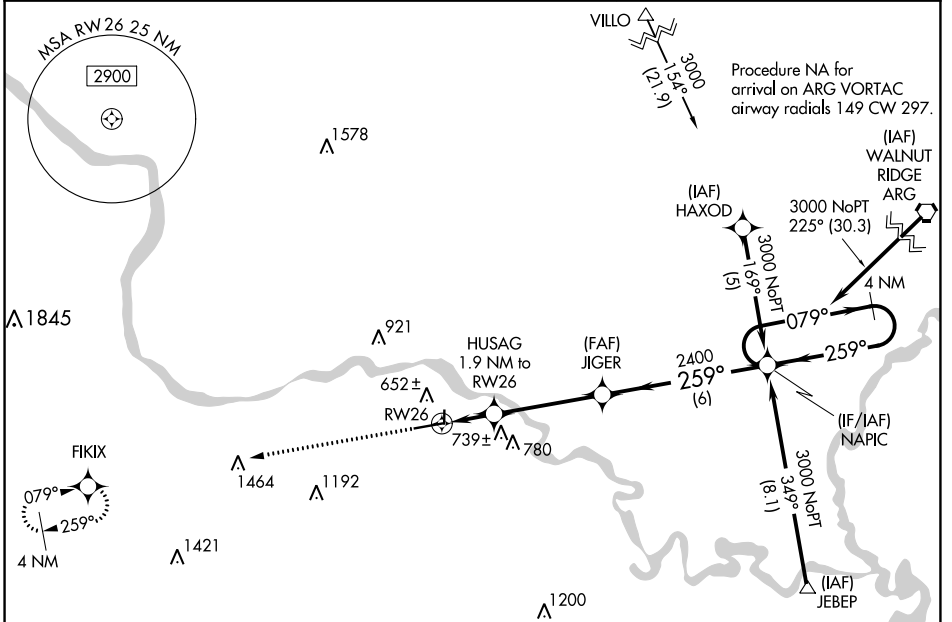


RNAV (GPS) RWY 26

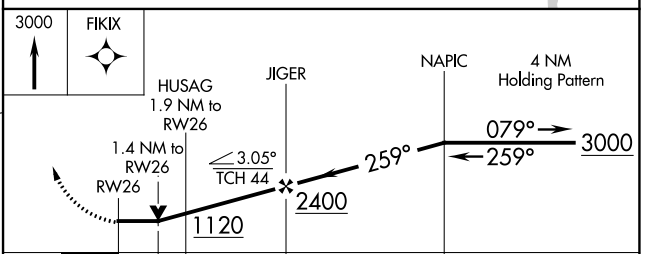
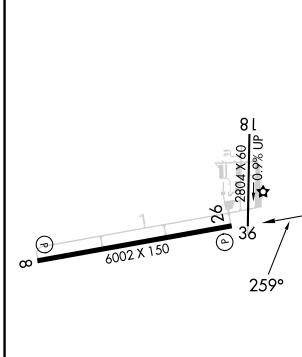
BATESVILLE RGNL (BVX)

APP CRS	Rwy Idg	6002
259°	TDZE	465
	Apt Elev	465

RNP APCH.		MISSED APPROACH: Climb to 3000 direct FIKIX and hold.
<p>∇ Circling NA N of Rwy 8-26.</p> <p>⚠ Rwy 26 helicopter visibility reduction below ¾ SM NA.</p>		
AWOS-3PT	MEMPHIS CENTER	UNICOM
126.375	126.85 281.55	122.8 (CTAF) 0



ELEV 465	TDZE 465
-----------------	-----------------



CATEGORY	A	B	C	D
LNAV MDA	940-1	475 (500-1)	940-1 3/8 475 (500-1 3/8)	940-1 1/2 475 (500-1 1/2)
CIRCLING	980-1 515 (600-1)	1000-1 535 (600-1)	1220-2 1/4 755 (800-2 1/4)	1400-3 935 (1000-3)

REIL Rwy 8 and 26 **0**
MIRL Rwy 8-26 **0**

BATESVILLE, ARKANSAS
Amdt 1C 27JAN22

35°44'N-91°39'W

BATESVILLE RGNL (BVX)
RNAV (GPS) RWY 26

SC-1, 28 NOV 2024 to 26 DEC 2024

SC-1, 28 NOV 2024 to 26 DEC 2024