

LOC I-PPHN <b>110.9</b>	APP CRS <b>043°</b>	Rwy Idg <b>5104</b>
		TDZE <b>647</b>
		Apt Elev <b>650</b>

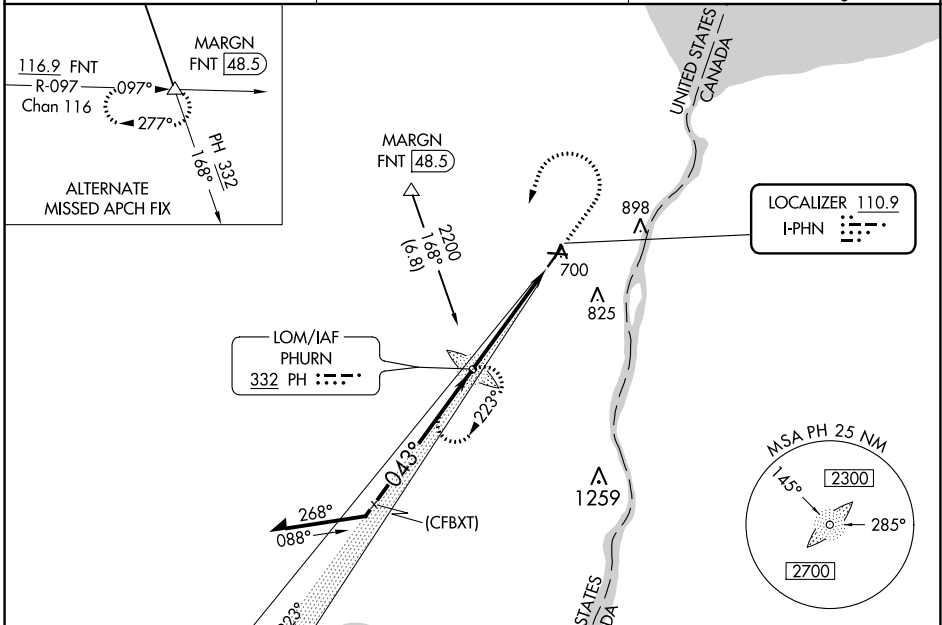
# ILS or LOC RWY 4

ST CLAIR COUNTY INTL (PHN)

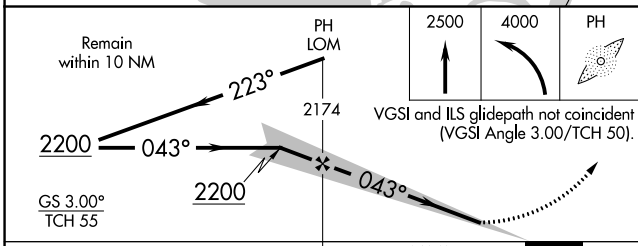
**NA** ADF required. When local altimeter setting not received, use Troy altimeter setting and increase all DA 95 feet and all MDA 100 feet; increase S-LOC 4 Cats C and D and Circling Cats C and D visibility 1/4 mile. For inop MALSRL when using Troy altimeter setting, increase S-ILS 4 all Cats visibility to 7/8 mile. Night landing: Rwy 10, 22, 28 NA.

**MALSRL** MISSED APPROACH: Climb to 2500 then climbing left turn to 4000 direct PHURN LOM and hold, continue climb-in-hold to 4000.

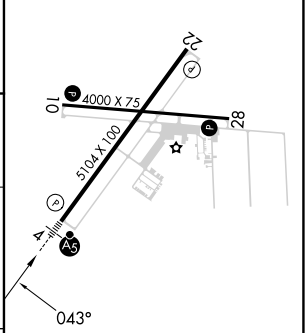
AWOS-3 <b>118.375</b>	SELRIDGE APP CON ★ <b>119.6 391.9</b>	UNICOM <b>123.05 (CTAF)</b>
--------------------------	--	--------------------------------



**ADF REQUIRED**



ELEV 650	TDZE 647
----------	----------



CATEGORY	A	B	C	D
S-ILS 4	847-1/2 200 (200-1/2)			
S-LOC 4	1100-1/2 453 (500-1/2)	1100-7/8 453 (500-7/8)		
<b>C</b> CIRCLING	1160-1 510 (600-1)	1260-1 3/4 610 (700-1 3/4)	1260-2 610 (700-2)	

HIRL Rwy 4-22	<b>1</b>
MIRL Rwy 10-28	<b>1</b>
REIL Rws 10, 22, and 28	<b>1</b>
FAF to MAP 4.6 NM	
Knots	60 90 120 150 180
Min:Sec	4:36 3:04 2:18 1:50 1:32

EC-1, 28 NOV 2024 to 26 DEC 2024

EC-1, 28 NOV 2024 to 26 DEC 2024