

WAAS CH <b>53523</b> <b>W04A</b>	APP CRS <b>043°</b>	Rwy ldg TDZE <b>647</b> Apt Elev <b>650</b>	<b>5104</b>
--	------------------------	---	-------------

# RNAV (GPS) RWY 4

ST CLAIR COUNTY INTL (PHN)

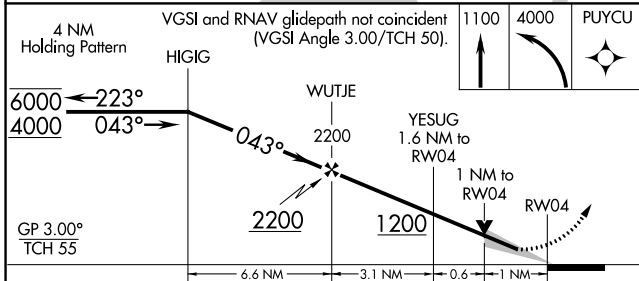
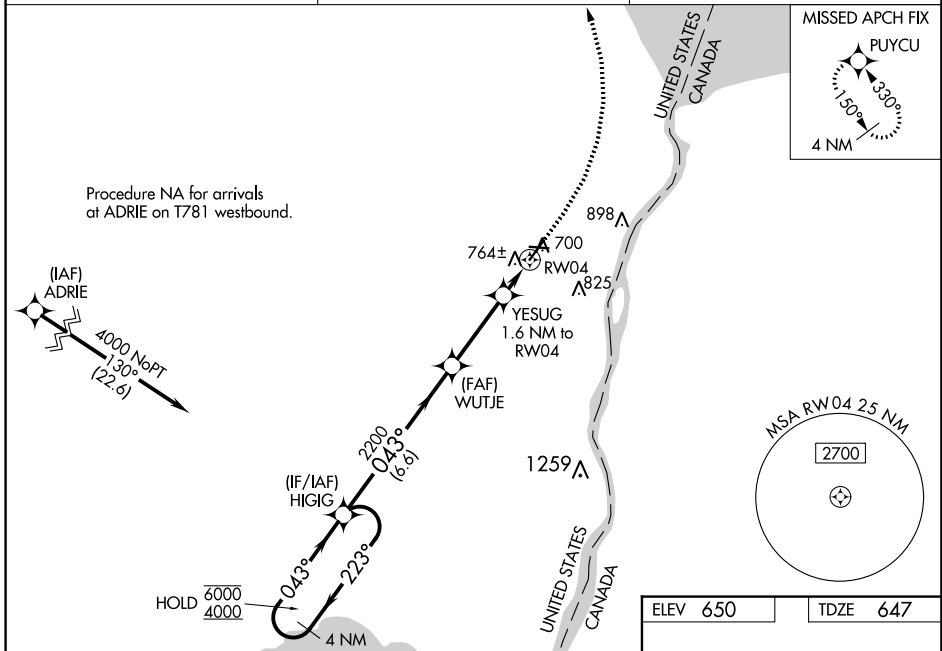
RNP APCH - GPS.

**⚠** Circling Rwy 10, 22, 28 NA at night. For uncompensated Baro-VNAV systems, LNAV/VNAV NA below -16°C or above 54°C. For inop ALS, increase LNAV/VNAV all Cats visibility to 7/8 SM and LNAV Cat C/D visibility to 1 SM.

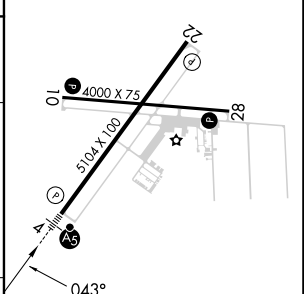
**MALS**

**MISSED APPROACH:** Climb to 1100 then climbing left turn to 4000 direct PUYCU and hold, continue climb-in-hold to 4000.

AWOS-3 <b>118.375</b>	SELFRIEDGE APP CON * <b>119.6 391.9</b>	UNICOM <b>123.05 (CTAF)</b>
--------------------------	--	--------------------------------



ELEV 650	TDZE 647
----------	----------



CATEGORY	A	B	C	D
LPV DA	847-1/2		200 (200-1/2)	
LNAV/VNAV DA	930-1/2		283 (300-1/2)	
LNAV MDA	1020-1/2 373 (400-1/2)		1020-5/8 373 (400-5/8)	
<b>C</b> CIRCLING	1160-1 510 (600-1)		1260-1 3/4 610 (700-1 3/4) 1260-2 610 (700-2)	

HIRL Rwy 4-22

MIRL Rwy 10-28

REIL Rws 10, 22, and 28

EC-1, 28 NOV 2024 to 26 DEC 2024

EC-1, 28 NOV 2024 to 26 DEC 2024