

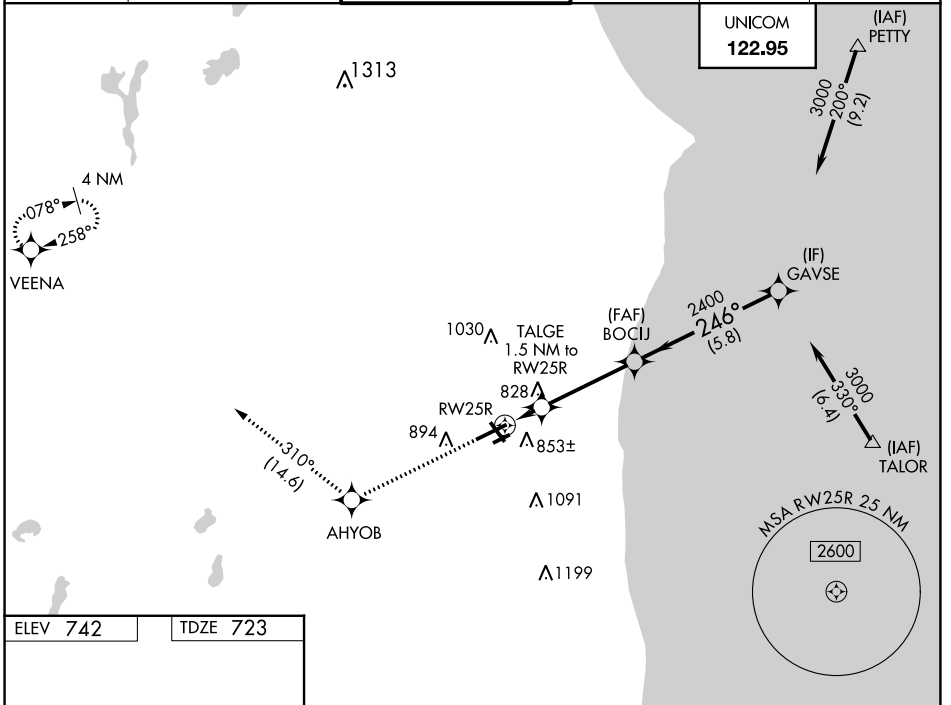
WAAS CH 49014 W25A	APP CRS 246°	Rwy Ldg TDZE 723 Apt Elev 742	6600
--	------------------------	---	-------------

RNAV (GPS) RWY 25R

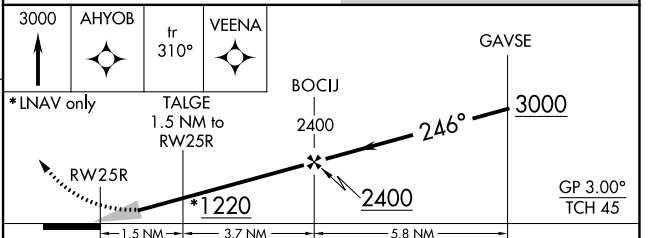
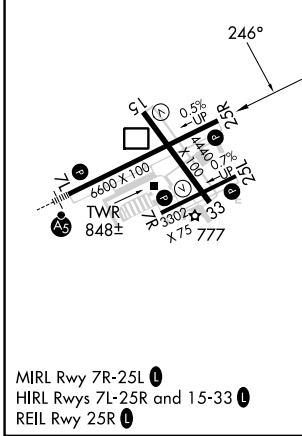
KENOSHA RGNL (ENW)

RNP APCH.		MISSED APPROACH: Climb to 3000 direct AHYOB and on track 310° to VEENA and hold.	
Circling Rwy 7R, 15 NA at night. For uncompensated Baro-VNAV systems, LNAV/VNAV NA below -23°C or above 54°C.			

ATIS 127.175	MILWAUKEE APP CON 135.875 317.725	KENOSHA TOWER ★ 118.6 (CTAF) 0 353.6	GND CON 121.875	CLNC DEL 121.875	CLNC DEL 118.6 (When twr closed)
------------------------	---	--	---------------------------	----------------------------	---



ELEV 742	TDZE 723
----------	----------



CATEGORY	A	B	C	D
LPV DA		923- ³ / ₄	200 (200- ³ / ₄)	
LNAV/VNAV DA		984- ⁷ / ₈	261 (300- ⁷ / ₈)	
LNAV MDA		1080-1	357 (400-1)	
CIRCLING	1200-1 458 (500-1)	1340-1 598 (600-1)	1400-1 ³ / ₄ 658 (700-1 ³ / ₄)	1440-2 ¹ / ₄ 698 (700-2 ¹ / ₄)

EC-3, 28 NOV 2024 to 26 DEC 2024

EC-3, 28 NOV 2024 to 26 DEC 2024