

APP CRS	Rwy Idg	5070
261°	TDZE	934
	Apt Elev	934

RNAV (GPS) RWY 26

DODGE COUNTY (UNU)

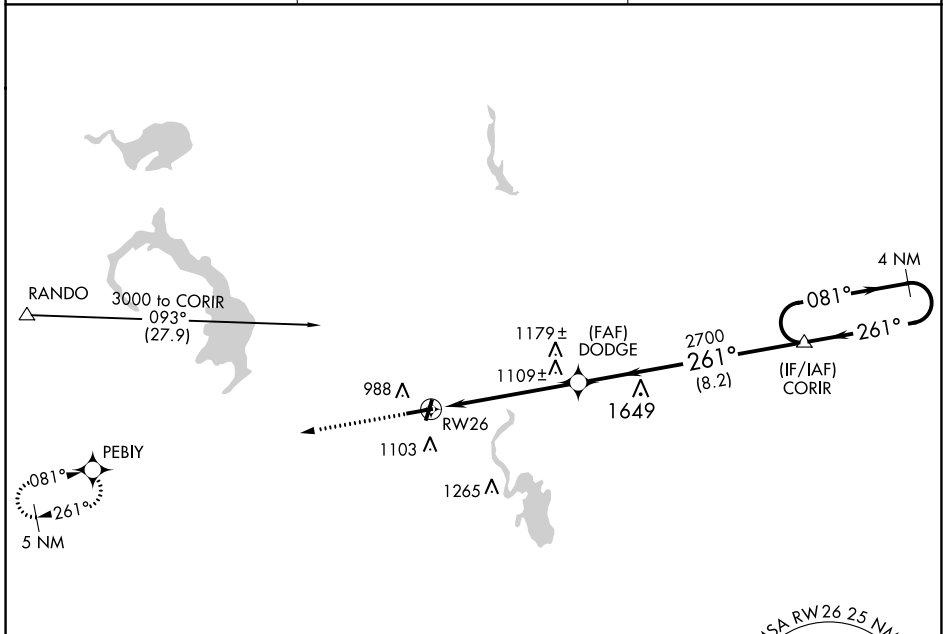
⚠ When local altimeter setting not received, use Dane County Rgnl-Truax Fld altimeter setting and increase all MDAs 100 feet, and increase Circling Cat C visibility ¼ SM. DME/DME RNP-0.3 NA. Visibility reduction by helicopters NA. Inoperative table does not apply.

MALSF



MISSED APPROACH: Climb to 3000 direct PEBIY and hold.

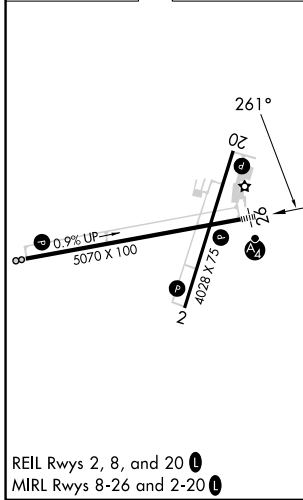
AWOS-3 120.825	MADISON APP CON * 119.15 343.7	UNICOM 122.7 (CTAF) 1
--------------------------	--	---------------------------------



EC-3, 28 NOV 2024 to 26 DEC 2024

EC-3, 28 NOV 2024 to 26 DEC 2024

ELEV 934	TDZE 934
----------	----------



3000 PEBIY ↑ ✦	CORIR 4 NM Holding Pattern 3000 081° → ← 261°			
	RW26 2700 3.04° TCH 34 5.4 NM 8.2 NM			
CATEGORY LNAV MDA CIRCLING	A 1360-1 1440-1	B 426 (500-1) 506 (600-1)	C 1360-1¼ 426 (500-1¼) 1440-1½ 506 (600-1½)	D NA NA