

| | | |
|--|------------------------|---|
| WAAS CH 99626 W18A | APP CRS 176° | Rwy Idg 3907 TDZE 757 Apt Elev 758 |
|--|------------------------|---|

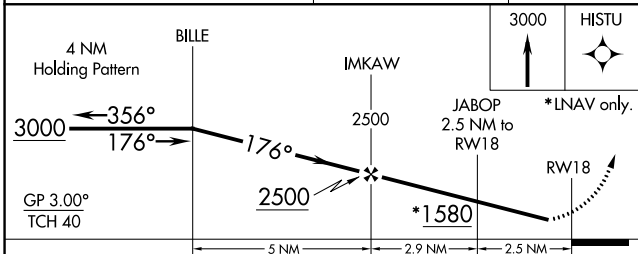
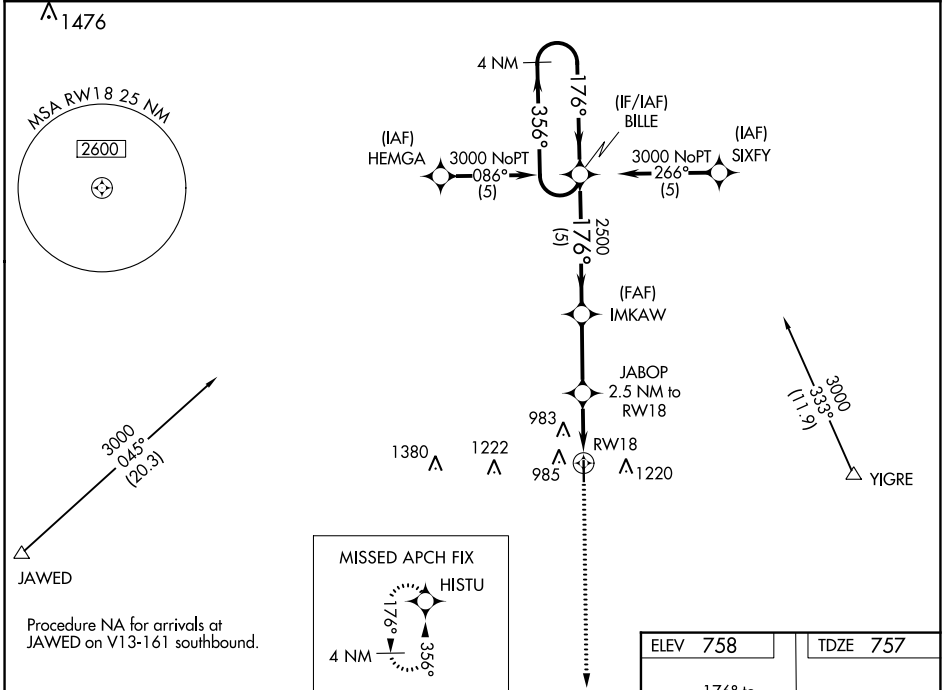
RNAV (GPS) RWY 18

TRENTON MUNI (TRX)

▼ Baro-VNAV NA. Use Chillicothe altimeter setting; when not received, use Kirksville altimeter setting and increase LPV DA to 1191 feet and all visibilities $\frac{3}{8}$ SM, LNAV/VNAV DA to 1341 feet and all visibilities $\frac{1}{4}$ SM; increase all MDAs 100 feet and Circling Cat B visibility $\frac{1}{4}$ SM. DME/DME RNP-0.3 NA. Helicopter visibility reduction below $\frac{3}{4}$ SM NA.

▲ NA MISSED APPROACH: Climb to 3000 direct HISTU and hold.

| | |
|---|---------------------------------|
| KANSAS CITY CENTER 125.25 235.975 | UNICOM 122.8 (CTAF) 0 |
|---|---------------------------------|



| | |
|----------------------|----------|
| ELEV 758 | TDZE 757 |
| 176° to RW18 | |
| 81 | |
| 4307 X 75 | |
| 36 | |
| MIRL Rwy 18-36 0 | |
| REIL Rwy 18 and 36 0 | |

| CATEGORY | A | B | C | D |
|--------------|-----------------------|---|---|----|
| LPV DA | 1098-1 $\frac{1}{8}$ | 341 (400-1 $\frac{1}{8}$) | | NA |
| LNAV/VNAV DA | 1248-1 $\frac{3}{4}$ | 491 (500-1 $\frac{3}{4}$) | | NA |
| LNAV MDA | 1180-1 | 423 (500-1) | | NA |
| CIRCLING | 1340-1 582 (600-1) | 1700-1 $\frac{1}{4}$ 942 (1000-1 $\frac{1}{4}$) | | NA |

NC-3, 28 NOV 2024 to 26 DEC 2024

NC-3, 28 NOV 2024 to 26 DEC 2024