

WAAS CH <b>90533</b> <b>W36A</b>	APP CRS <b>001°</b>	Rwy Idg TDZE Apt Elev	<b>4141</b> <b>243</b> <b>243</b>
--	------------------------	-----------------------------	---

# RNAV (GPS) RWY 36

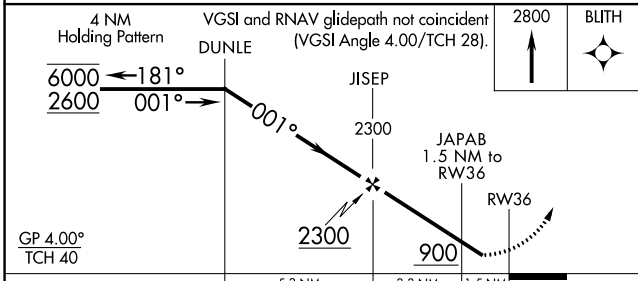
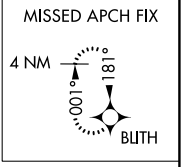
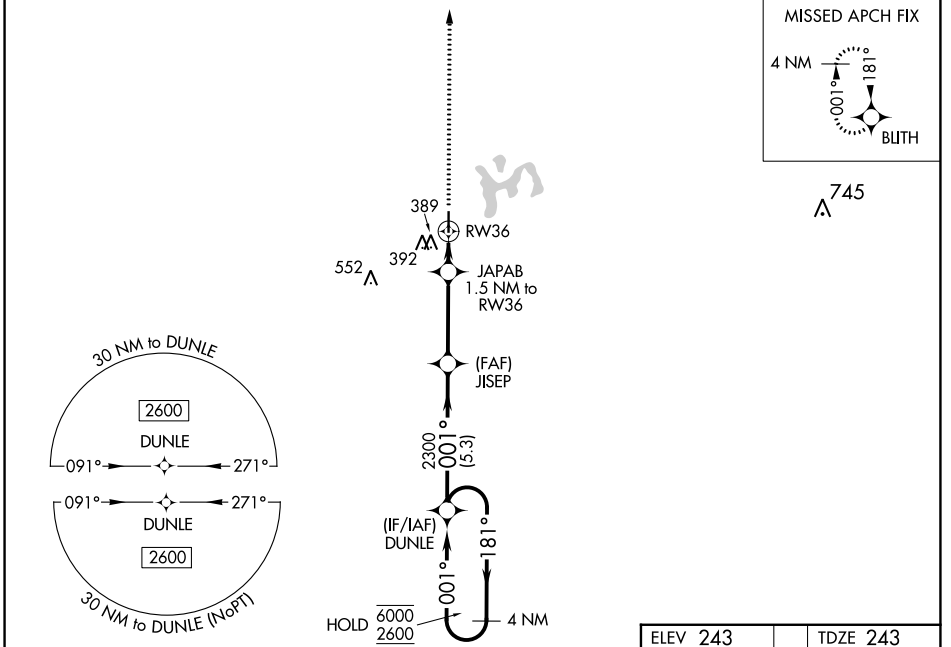
MANILA MUNI (MXA)

RNP APCH - GPS.

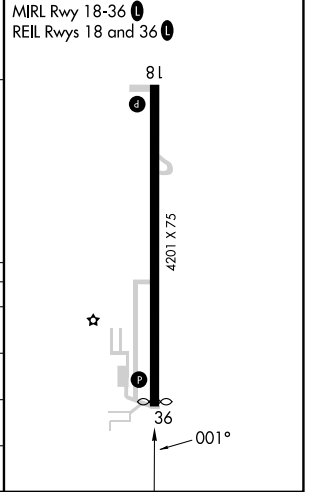
**⚠** Circling Rwy 18 NA at night. Rwy 36 helicopter visibility reduction below ¼ SM NA.  
**⚠** Baro-VNAV NA. Use Blytheville Muni altimeter setting; when not received, use Jonesboro altimeter setting and increase all DAs/MDAs 20 feet, and all LNAV/VNAV visibilities ½ SM.

MISSED APPROACH: Climb to 2800 direct BLTH and hold, continue climb-in-hold to 2800.

HKA ASOS <b>135.025</b>	MEMPHIS CENTER <b>120.075 289.4</b>	UNICOM <b>122.8 (CTAF)</b>
----------------------------	--	-------------------------------



ELEV 243	TDZE 243
----------	----------



CATEGORY	A	B	C	D
LPV DA	592-1	349 (400-1)		NA
LNAV/VNAV DA	552-7/8	309 (400-7/8)		NA
LNAV MDA	660-1	417 (500-1)		NA
<b>C</b> CIRCLING	740-1	497 (500-1)		NA

SC-1, 28 NOV 2024 to 26 DEC 2024

SC-1, 28 NOV 2024 to 26 DEC 2024