

ATIS
 128.375
 CLNC DEL
 119.45
 GND CON
 121.8 239.0
 HOOKS TOWER*
 127.4 354.1 (EAST)
 118.4 (CTAF) 354.1 (WEST)
 HOUSTON DEP CON
 119.7 281.4

**TOP ALTITUDE:
 ASSIGNED BY ATC**

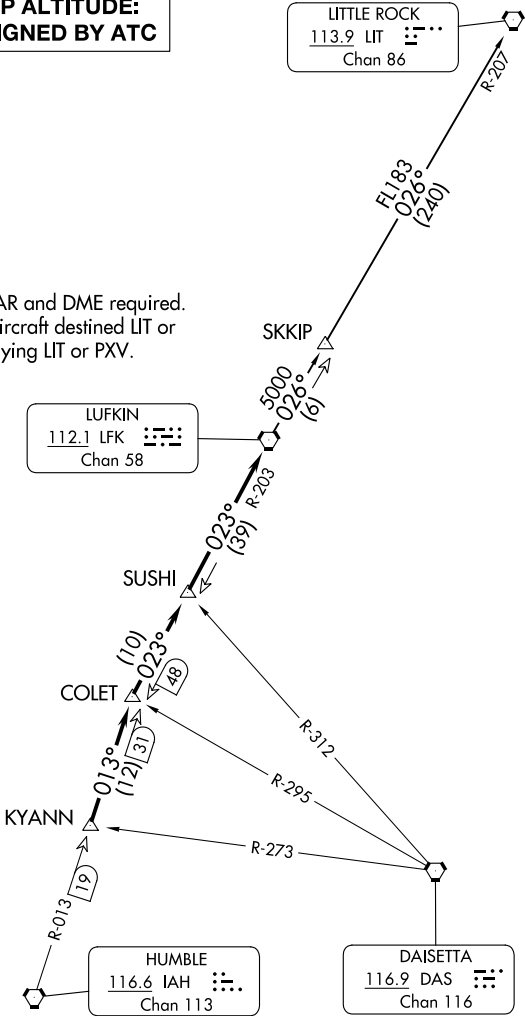
LITTLE ROCK
 113.9 LIT
 Chan 86

NOTE: RADAR and DME required.
 NOTE: For aircraft destined LIT or
 overflying LIT or PXV.

LUFKIN
 112.1 LFK
 Chan 58

DAISETTA
 116.9 DAS
 Chan 116

HUMBLE
 116.6 IAH
 Chan 113



TAKEOFF MINIMUMS

Rwys 17L, 35R: NA - Environmental.
 Waterways 17, 35: NA - Air Traffic.
 Rwys 17R, 35L: Standard.

NOTE: Chart not to scale.

(CONTINUED ON FOLLOWING PAGE)



DEPARTURE ROUTE DESCRIPTION

TAKEOFF ALL RUNWAYS: When entering controlled airspace, climb on assigned heading for RADAR vectors to KYANN INT. Maintain ATC assigned altitude. Expect filed altitude 10 minutes after departure, thence. . . .

. . . .on IAH R-013 to COLET INT, then right turn on LFK R-203 to LFK VORTAC.

LITTLE ROCK TRANSITION (LFK3.LIT): From over LFK VORTAC on LFK R-026 to SKKIP INT, then on LFK R-026 and LIT R-207 to LIT VORTAC.

SC-5, 28 NOV 2024 to 26 DEC 2024

SC-5, 28 NOV 2024 to 26 DEC 2024