

WAAS CH 90409 W12A	APP CRS 120°	Rwy Idg TDZE Apt Elev	5000 1274 1274
--	------------------------	-----------------------------	---

RNAV (GPS) RWY 12

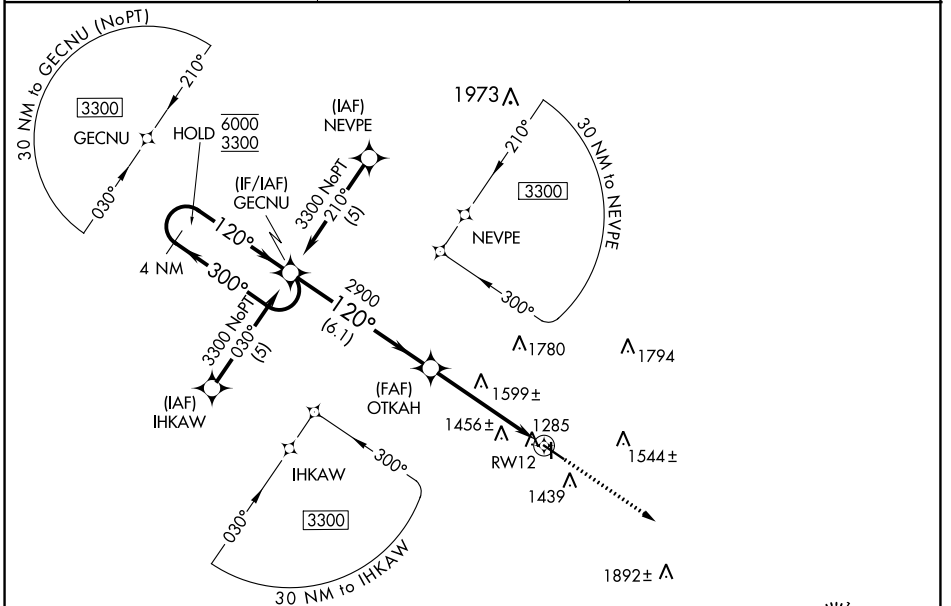
DENISON MUNI (DNS)

RNP APCH-GPS.

▽ Circling NA to Rwys 18 and 36. For uncompensated Baro-VNAV systems, LNAV/VNAV NA below -17°C or above 54°C. Baro-VNAV and VDP NA when using Carroll altimeter setting.
▲ When local altimeter setting not received, use Carroll altimeter setting; increase LPV DA 1596 feet, LNAV/VNAV DA to 1626 feet; increase all MDAs 80 feet and visibility LNAV Cat C 1/8 SM and Circling Cat C 1/4 SM.

MISSED APPROACH:
Climb to 3900 direct
OTLAZ and hold.

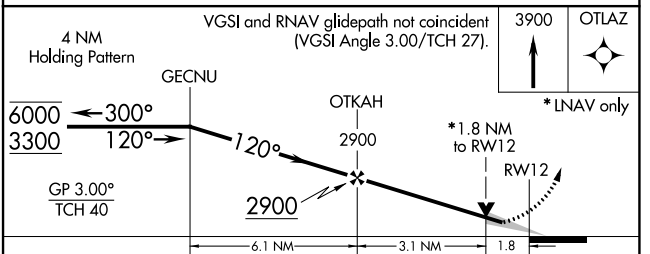
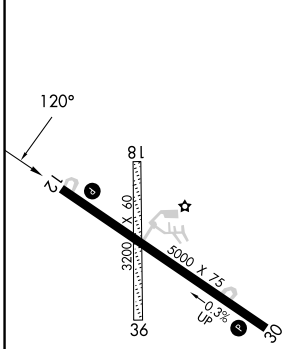
AWOS-3 119.95	MINNEAPOLIS CENTER 119.6 290.4	UNICOM 122.8 (CTAF) 0
-------------------------	--	---------------------------------



NC-3, 28 NOV 2024 to 26 DEC 2024

NC-3, 28 NOV 2024 to 26 DEC 2024

ELEV 1274	TDZE 1274
-----------	-----------



CATEGORY	A	B	C	D
LPV DA		1524-1 250 (300-1)		NA
LNAV/VNAV DA		1554-1 280 (300-1)		NA
LNAV MDA	1860-1	586 (600-1)	1860-1 3/4 586 (600-1 3/4)	NA
CIRCLING	1860-1 586 (600-1)	1880-1 606 (700-1)	2100-2 1/2 826 (900-2 1/2)	NA

MIRL Rwy 12-30 0
REIL Rwy 12 and 30 0

DENISON, IOWA
Amdt 1C 15JUL21

41°59'N-95°23'W

DENISON MUNI (DNS)
RNAV (GPS) RWY 12