

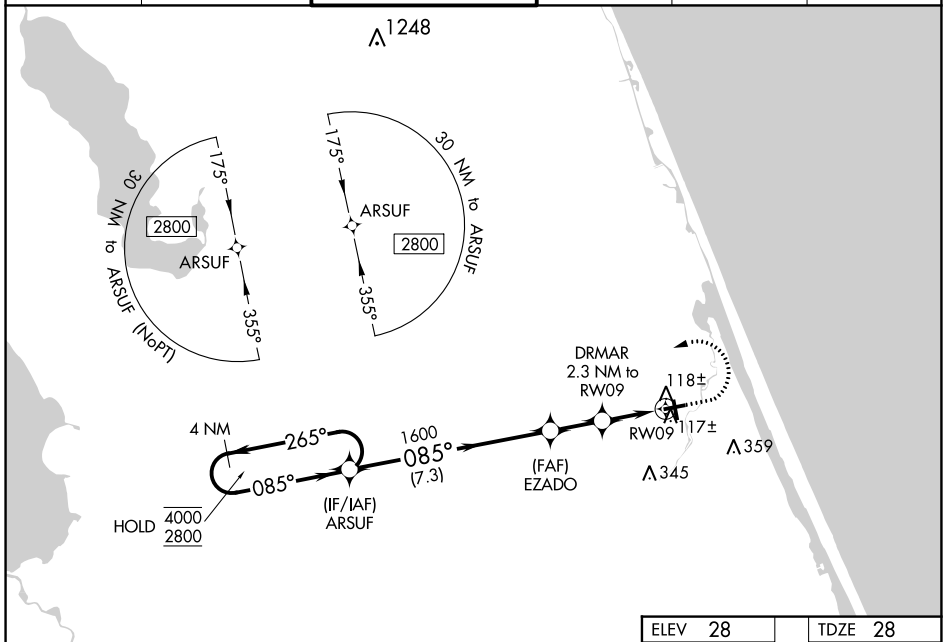
WAAS CH 82334 W09A	APP CRS 085°	Rwy Idg TDZE Apt Elev	4005 28 28
--	------------------------	-----------------------------	---------------------------------------

RNAV (GPS) RWY 9

ORMOND BEACH MUNI (OMN)

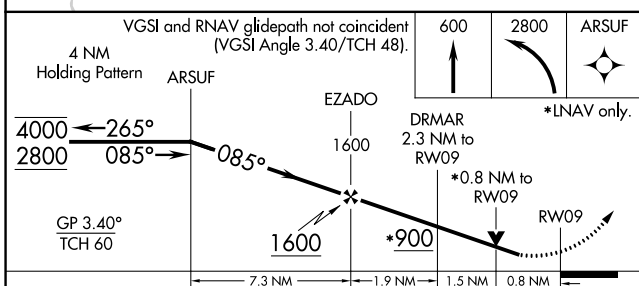
RNP APCH.		MISSED APPROACH: Climb to 600 then climbing left turn to 2800 direct ARSUF and hold.			
<p>▼ Rwy 9 helicopter visibility reduction below 3/4 SM NA. For uncompensated Baro-VNAV systems, LNAV/VNAV NA below -15° C or above 54° C. VDP NA when using Daytona Beach altimeter setting.</p>					

ATIS 118.475	DAYTONA APP CON 125.8 269.075	ORMOND BEACH TOWER* 119.075 (CTAF)	GND CON 121.625	CLNC DEL 121.625	UNICOM 123.05
------------------------	---	--	---------------------------	----------------------------	-------------------------



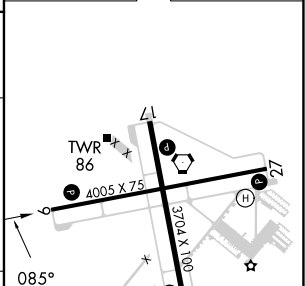
SE-3, 28 NOV 2024 to 26 DEC 2024

SE-3, 28 NOV 2024 to 26 DEC 2024



ELEV 28	TDZE 28
---------	---------

CATEGORY	A	B	C	D
LPV DA	313-1 285 (300-1)			NA
LNAV/VNAV DA	278-1 250 (300-1)			NA
LNAV MDA	380-1 352 (400-1)			NA
CIRCLING	500-1 472 (500-1)		740-2 712 (800-2)	NA



REIL Rwy 9, 17, 27 and 35

MIRL Rwy 9-27 and 17-35