

BNDTO SIX DEPARTURE (RNAV)
(BNDTO6, BNDTO) 11 JUL 24

HOUSTON, TEXAS
GEORGE BUSH INTL/NL/HOUSTON (IAH)

HOUSTON DEP CON
126.675 339.8
D-ATIS
124.05
CLNC DEL
128.1
CPDLC
GND CON
118.575 (Rwys 8L/R, 26L/R, 9, 27)
121.7 (Rwys 15L/R, 33L/R)
HOUSTON TOWER
120.725 290.2 (Rwys 8L, 26R)
125.35 290.2 (Rwys 8R, 26L)
127.3 288.25 (Rwys 15L/R, 33L/R)
135.15 290.2 (Rwys 9, 27)

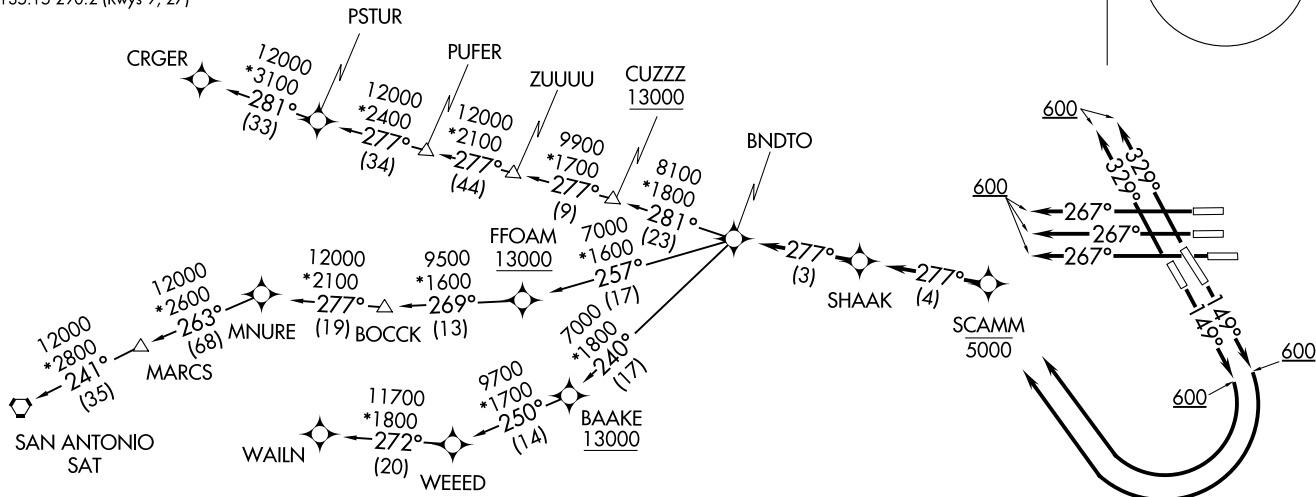
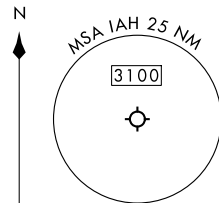
RNAV 1 - DME/DME/IRU or GPS required.
RADAR required.
RADAR required for non - GPS equipped aircraft.

TOP ALTITUDE:
16000

TAKEOFF MINIMUMS

Rwys 15L/R, 26L/R, 27, 33L/R: Standard with minimum climb of 500'/NM to 1200.

NOTE: For use during west flow at IAH, for east flow file the PITZZ DEPARTURE.



(CONTINUED ON FOLLOWING PAGE)

NOTE: Chart not to scale.

(BNDTO6, BNDTO) 24193
BNDTO SIX DEPARTURE (RNAV)

HOUSTON, TEXAS
GEORGE BUSH INTL/NL/HOUSTON (IAH)
AL-5461 (FAA)



DEPARTURE ROUTE DESCRIPTION

TAKEOFF RUNWAYS 15L/R: Climb heading 149° to 600, then right turn direct to cross SCAMM at or below 5000, then on track 277° to SHAAK, thence

TAKEOFF RUNWAYS 26L/R, 27: Climb heading 267° to 600, expect RADAR vectors to SHAAK, thence

TAKEOFF RUNWAYS 33L/R: Climb heading 329° to 600, expect RADAR vectors to SHAAK, thence

. . . . on track 277° to BNDTO, then on (transition). Maintain 16000.
Expect filed altitude 10 minutes after departure.

CRGER TRANSITION (BNDTO6.CRGER)

MNURE TRANSITION (BNDTO6.MNURE)

SAN ANTONIO TRANSITION (BNDTO6.SAT)

WAILN TRANSITION (BNDTO6.WAILN)

SC-5, 28 NOV 2024 to 26 DEC 2024

SC-5, 28 NOV 2024 to 26 DEC 2024