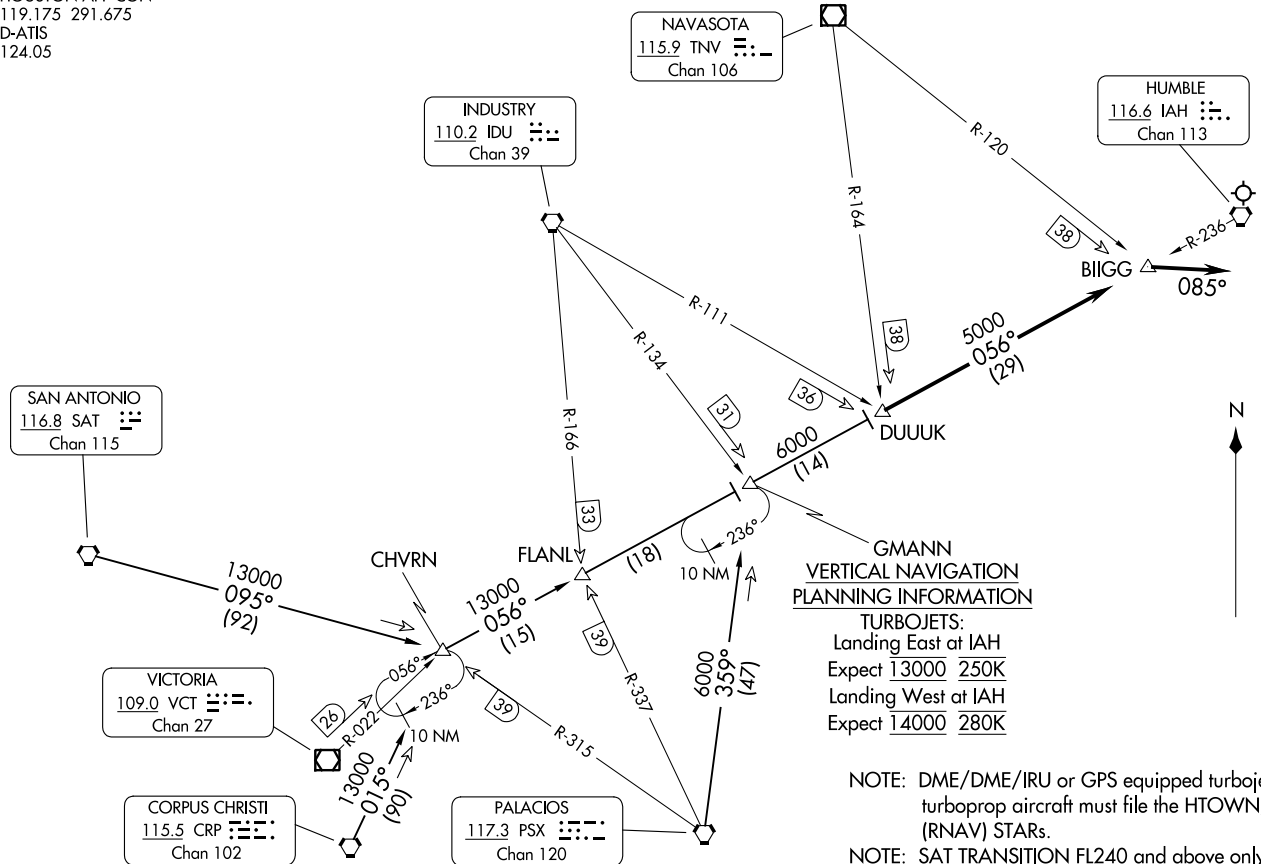


HOUSTON APP CON  
 119.175 291.675  
 D-ATIS  
 124.05



**GMANN  
 VERTICAL NAVIGATION  
 PLANNING INFORMATION**  
 TURBOJETS:  
 Landing East at IAH  
 Expect 13000 250K  
 Landing West at IAH  
 Expect 14000 280K

NOTE: DME/DME/IRU or GPS equipped turbojet and turboprop aircraft must file the HTOWN/TEJAS (RNAV) STARS.  
 NOTE: SAT TRANSITION FL240 and above only.

(CONTINUED ON FOLLOWING PAGE)

NOTE: Chart not to scale.

ARRIVAL ROUTE DESCRIPTION

CORPUS CHRISTI TRANSITION (CRP.DUUUK3): From over CRP VORTAC on CRP R-015 to CHVRN, then on IAH R-236 to DUUUK. Thence . . . .

PALACIOS TRANSITION (PSX.DUUUK3): From over PSX VORTAC on PSX R-359 to GMANN, then on IAH R-236 to DUUUK. Thence . . . .

SAN ANTONIO TRANSITION (SAT.DUUUK3): From over SAT VORTAC on SAT R-095 to CHVRN, then on IAH R-236 to DUUUK. Thence . . . .

. . . . From over DUUUK on IAH R-236 to BIIGG. Depart BIIGG heading 085° for vectors to final approach.

SC-5, 28 NOV 2024 to 26 DEC 2024

SC-5, 28 NOV 2024 to 26 DEC 2024