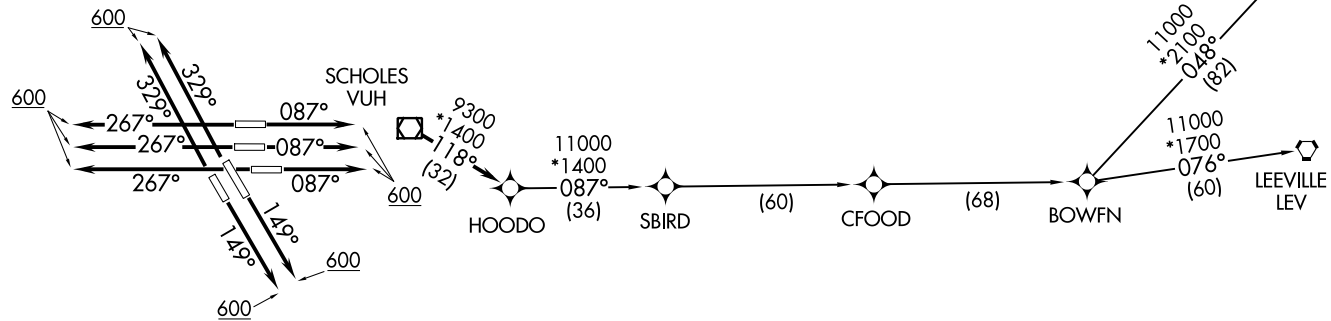
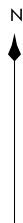


HOODO SEVEN DEPARTURE (RNAV)  
 (HOODO07.HOODO) 07OCT21  
 HOUSTON, TEXAS  
 GEORGE BUSH INT/CNTL/HOUSTON (IAH)

D-ATIS  
 124.05  
 CLNC DEL  
 128.1  
 CPDLC  
 GND CON  
 118.575 (Rwys 8L/R, 9, 26L/R, 27)  
 121.7 (Rwys 15L/R, 33L/R)  
 HOUSTON TOWER  
 120.725 290.2 (Rwys 8L, 26R)  
 125.35 290.2 (Rwys 8R, 26L)  
 127.3 288.25 (Rwys 15L/R, 33L/R)  
 135.15 290.2 (Rwys 9, 27)  
 HOUSTON DEP CON  
 127.125 269.075

NOTE: RNAV 1.  
 NOTE: RADAR required.  
 NOTE: ATC assigned only.  
 NOTE: DME/DME/IRU or GPS required.  
 NOTE: For non-GPS equipped aircraft, LCH, LLA, TBD, and LEV DME's must be operational.

**TOP ALTITUDE:  
 16000**



TAKEOFF MINIMUMS  
 Rwys 8L/R, 9, 15L/R, 26L/R, 27, 33L/R:  
 Standard with minimum climb of 500' per NM to 600.

NOTE: Chart not to scale.

(NARRATIVE ON FOLLOWING PAGE)

(HOODO07.HOODO) 21280  
 HOODO SEVEN DEPARTURE (RNAV)  
 AL-5461 (FAA)  
 HOUSTON, TEXAS  
 GEORGE BUSH INT/CNTL/HOUSTON (IAH)



DEPARTURE ROUTE DESCRIPTION

TAKEOFF RUNWAYS 8L/R, 9: Climb on heading 087° to 600, for RADAR vectors to VUH VOR/DME, thence . . . .

TAKEOFF RUNWAYS 15L/R: Climb on heading 149° to 600, for RADAR vectors to VUH VOR/DME, thence . . . .

TAKEOFF RUNWAYS 26L/R, 27: Climb on heading 267° to 600, for RADAR vectors to VUH VOR/DME, thence . . . .

TAKEOFF RUNWAYS 33L/R: Climb on heading 329° to 600, for RADAR vectors to VUH VOR/DME, thence . . . .

. . . . on track 118° to HOODO, then on (transition). Maintain 16000.

Expect filed altitude 10 minutes after departure.

BOWFN TRANSITION (HOODO7.BOWFN)

CFOOD TRANSITION (HOODO7.CFOOD)

HARVEY TRANSITION (HOODO7.HRV)

LEEVILLE TRANSITION (HOODO7.LEV)

SBIRD TRANSITION (HOODO7.SBIRD)

SC-5, 28 NOV 2024 to 26 DEC 2024

SC-5, 28 NOV 2024 to 26 DEC 2024