

LOC/DME I-JYV <b>109.7</b> Chan <b>34</b>	APP CRS <b>267°</b>	Rwy Idg <b>9402</b> TDZE <b>95</b> Apt Elev <b>96</b>
---	------------------------	---

# ILS or LOC RWY 26L

GEORGE BUSH INTCNL/HOUSTON (IAH)

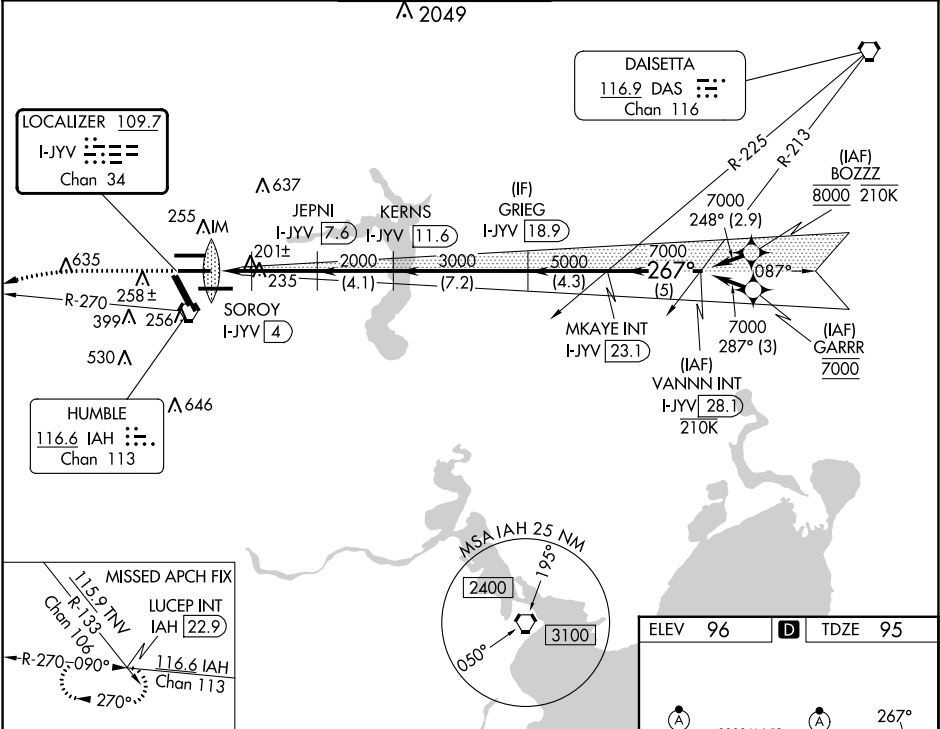
DME required. From BOZZZ, GARRR: RNAV 1-GPS required.

⚠ Simultaneous approach authorized with Rwy 26R and Rwy 27. For inop ALS, increase S-ILS 26L Cat E visibility to RVR 4000, S-LOC 26L Cat C/D/E visibility to RVR 5000.

ALSF-2

MISSED APPROACH: Climb to 3000 then left turn heading 240° and IAH VORTAC R-270 to LUCEP INT/IAH 22.9 DME and hold.

D-ATIS <b>124.05</b>	HOUSTON APP CON <b>120.05 379.1</b> EAST <b>124.35 316.15</b> WEST	HOUSTON TOWER <b>125.35 290.2</b>	GND CON <b>118.575</b>	CLNC DEL <b>128.1</b>	CPDLC
-------------------------	--	--------------------------------------	---------------------------	--------------------------	-------



SC-5, 28 NOV 2024 to 26 DEC 2024

SC-5, 28 NOV 2024 to 26 DEC 2024

ELEV 96	<b>D</b> TDZE 95					
3000	hdg 240°	IAH R-270	LUCEP INT	VGSI and ILS glidepath not coincident (VGSI Angle 3.00/TCH 71).	MKAYE INT I-JYV 23.1	VANNN INT I-JYV 28.1
*LOC only						
I-JYV 1.7	*I-JYV 2.7	SOROI I-JYV 4	JEPNI I-JYV 7.6	KERN S I-JYV 11.6	GRIEG I-JYV 18.9	VANNN INT I-JYV 28.1
0.1	0.8 NM	1.4 NM	3.5 NM	4.1 NM	7.2 NM	4.3 NM
3000	2000	2000	3000	5000	7000	7000
CATEGORY	A	B	C	D	E	
S-ILS 26L	295/18		200 (200-½)			
S-LOC 26L	460/24	365 (400-½)		460/35	365 (400-¾)	
FDZ/CL Rwy 8R, 8L, 15R, 26R, 26L, 27 and 33L						
HIRL all Rwys						
FAF to MAP 5.8 NM						
Knots	60	90	120	150	180	
Min:Sec	5:48	3:52	2:54	2:19	1:56	