

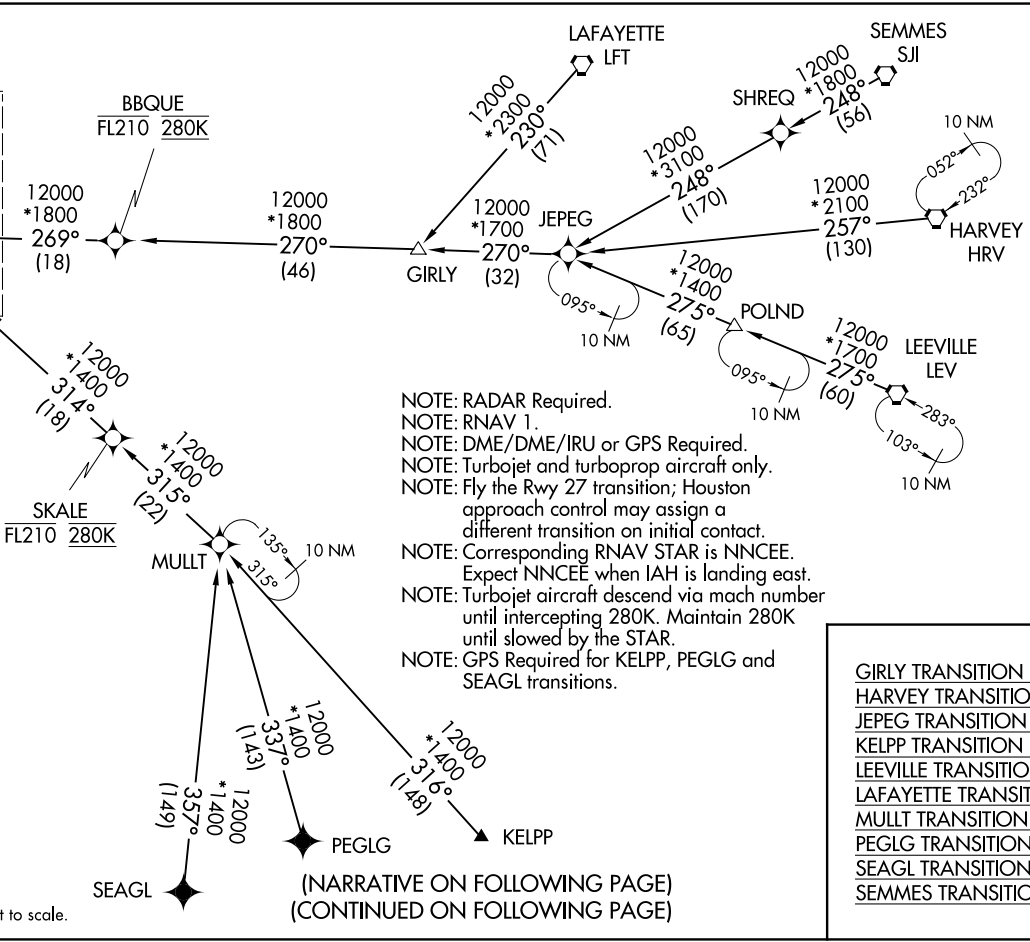
HOUSTON APP CON  
119.625 226.675  
D-ATIS  
124.05

(LINKK.LINKK1) 221.39 AL-5461 (FAA) GEORGE BUSH INTCNL/HOUSTON (IAH) HOUSTON, TEXAS

LINKK ONE ARRIVAL (RNAV) Transition Routes  
(LINKK.LINKK1) 30AR15 GEORGE BUSH INTCNL/HOUSTON (IAH) HOUSTON, TEXAS

See following page for Arrival routes.

LINKK
15000 250K
12000



- NOTE: RADAR Required.
- NOTE: RNAV 1.
- NOTE: DME/DME/IRU or GPS Required.
- NOTE: Turbojet and turboprop aircraft only.
- NOTE: Fly the Rwy 27 transition; Houston approach control may assign a different transition on initial contact.
- NOTE: Corresponding RNAV STAR is NNCEE. Expect NNCEE when IAH is landing east.
- NOTE: Turbojet aircraft descend via mach number until intercepting 280K. Maintain 280K until slowed by the STAR.
- NOTE: GPS Required for KELPP, PEGLG and SEAGL transitions.

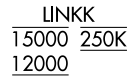
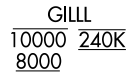
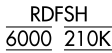
GIRLY TRANSITION (GIRLY.LINKK1);  
 HARVEY TRANSITION (HRV.LINKK1);  
 JEPEG TRANSITION (JEPEG.LINKK1);  
 KELPP TRANSITION (KELPP.LINKK1);  
 LEEVILLE TRANSITION (LEV.LINKK1);  
 LAFAYETTE TRANSITION (LFT.LINKK1);  
 MULT TRANSITION (MULT.LINKK1);  
 PEGLG TRANSITION (PEGLG.LINKK1);  
 SEAGL TRANSITION (SEAGL.LINKK1);  
 SEMMES TRANSITION (SJI.LINKK1);

(NARRATIVE ON FOLLOWING PAGE)  
(CONTINUED ON FOLLOWING PAGE)

NOTE: Chart not to scale.

LINKK ONE ARRIVAL (RNAV) Arrival Routes  
 (LINKK, LINKK1) 30APR15  
 HOUSTON, TEXAS  
 GEORGE BUSH INTCNL/HOUSTON (IAH)

HOUSTON APP CON  
 119.625 226.675  
 D-ATIS  
 124.05



- NOTE: RADAR Required.
- NOTE: RNAV 1.
- NOTE: DME/DME/IRU or GPS Required.
- NOTE: Turbojet and turboprop aircraft only.
- NOTE: Fly the Rwy 27 transition; Houston approach control may assign a different transition on initial contact.
- NOTE: Corresponding RNAV STAR is NNCEE. Expect NNCEE when IAH is landing east.
- NOTE: Turbojet aircraft descend via mach number until intercepting 280K. Maintain 280K until slowed by the STAR.
- NOTE: GPS Required for KELPP, PEGLG and SEAGL transitions.

ARRIVAL ROUTE DESCRIPTION

From LINKK on track 301° to cross GILLL between 8000 and 10000 and at 240K.

**LANDING RUNWAY 26L:** From GILLL on track 325° to cross GARRR at 7000 and at 210K. Expect assigned instrument approach RWY 26L.

**LANDING RUNWAY 26R:** From GILLL on track 325° to cross GARRR at 7000 and at 210K, then on track 290° at 210K. Expect vectors to final approach course.

**LANDING RUNWAY 27:** From GILLL on track 313° to cross RDFSH at 6000 and at 210K. Expect assigned instrument approach RWY 27.

NOTE: Chart not to scale.

(LINKK, LINKK1) 21112  
 AL-5461 (FAA)  
 GEORGE BUSH INTCNL/HOUSTON (IAH)  
 HOUSTON, TEXAS  
 LINKK ONE ARRIVAL (RNAV) Arrival Routes