

(LFK3.LFK) 24137

# LUFKIN THREE DEPARTURE

AL-5461 (FAA)

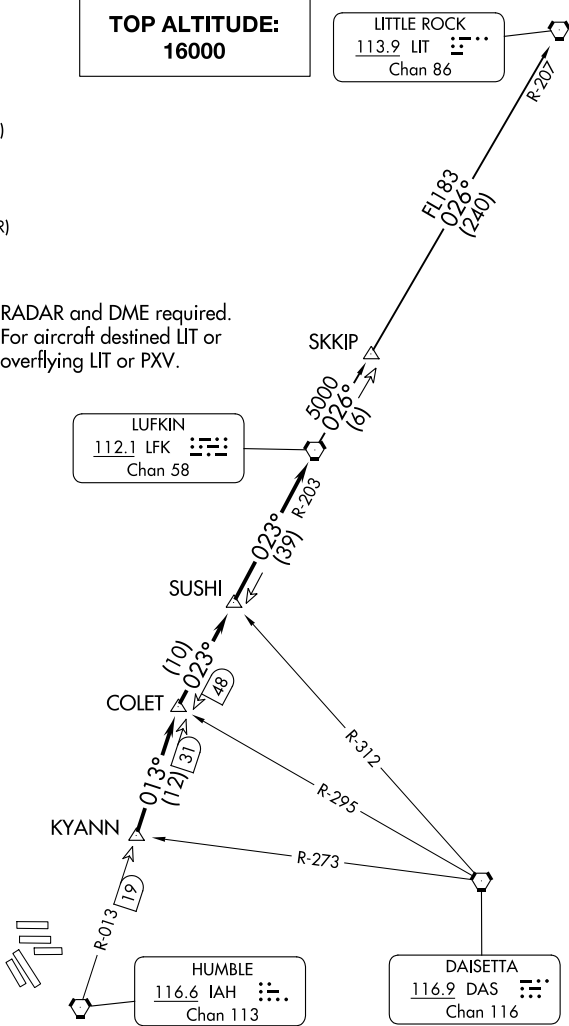
GEORGE BUSH INTCNL/HOUSTON (IAH)  
HOUSTON, TEXAS

D-ATIS  
124.05  
CLNC DEL  
128.1  
CPDLC  
GND CON  
118.575 (Rwys 8L/R, 26L/R, 9/27)  
121.7 (Rwys 15L/R, 33L/R)  
HOUSTON TOWER  
120.725 290.2 (Rwys 8L/26R)  
125.35 290.2 (Rwys 8R/26L)  
127.3 288.25 (Rwys 15L/R, 33L/R)  
135.15 290.2 (Rwys 9/27)  
HOUSTON DEP CON  
132.25 285.425

**TOP ALTITUDE:  
16000**

LITTLE ROCK  
113.9 LIT  
Chan 86

NOTE: RADAR and DME required.  
NOTE: For aircraft destined LIT or  
overflying LIT or PXV.



**TAKEOFF MINIMUMS:**

Rwys 8L/R, 9, 15L/R, 26L/R, 27, 33L/R: Standard.

NOTE: Chart not to scale.

(CONTINUED ON FOLLOWING PAGE)

SC-5, 28 NOV 2024 to 26 DEC 2024

SC-5, 28 NOV 2024 to 26 DEC 2024

LUFKIN THREE DEPARTURE  
(LFK3.LFK) 07OCT21

HOUSTON, TEXAS  
GEORGE BUSH INTCNL/HOUSTON (IAH)

(LFK3.LFK) 21280

# LUFKIN THREE DEPARTURE

AL-5461 (FAA)

GEORGE BUSH INTCNTL/HOUSTON (IAH)  
HOUSTON, TEXAS



## DEPARTURE ROUTE DESCRIPTION

TAKEOFF ALL RUNWAYS: Climb on assigned heading for RADAR vectors to KYANN INT, maintain 16000. Expect filed altitude 10 minutes after departure, thence. . . .

. . . .on IAH R-013 to COLET INT, then right turn on LFK R-203 to LFK VORTAC.

LITTLE ROCK TRANSITION (LFK3.LIT): From over LFK VORTAC on LFK R-026 to SKKIP INT, then on LFK R-026 and LIT R-207 to LIT VORTAC.

SC-5, 28 NOV 2024 to 26 DEC 2024

SC-5, 28 NOV 2024 to 26 DEC 2024

# LUFKIN THREE DEPARTURE

(LFK3.LFK) 07OCT21

HOUSTON, TEXAS  
GEORGE BUSH INTCNTL/HOUSTON (IAH)