

(LURIC8.LURIC) 21280

# LURIC EIGHT DEPARTURE (RNAV)

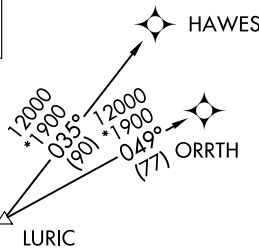
AL-5461 (FAA)

GEORGE BUSH INTCNTL/HOUSTON (IAH)

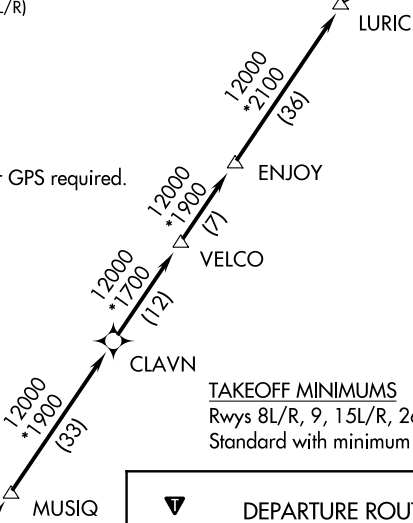
HOUSTON, TEXAS

D-ATIS  
124.05  
CLNC DEL  
128.1  
CPDLC  
GND CON  
118.575 (Rwys 8L/R, 26L/R, 9/27)  
121.7 (Rwys 15L/R, 33L/R)  
HOUSTON TOWER  
120.725 290.2 (Rwys 8L/26R)  
125.35 290.2 (Rwys 8R/26L)  
127.3 288.25 (Rwys 15L/R, 33L/R)  
135.15 290.2 (Rwys 9/27)  
HOUSTON DEP CON  
132.25 285.425

**TOP ALTITUDE:  
16000**



NOTE: RADAR required.  
NOTE: DME/DME/IRU or GPS required.  
NOTE: RNAV 1.



### TAKEOFF MINIMUMS

Rwys 8L/R, 9, 15L/R, 26L/R, 27, 33L/R:  
Standard with minimum climb of 500' per NM to 600.



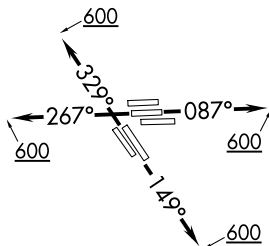
### DEPARTURE ROUTE DESCRIPTION

**TAKEOFF RUNWAYS 8L/R, 9:** Climb on heading 087° to 600 for RADAR vectors to KNTKY, thence . . .  
**TAKEOFF RUNWAYS 15L/R:** Climb on heading 149° to 600 for RADAR vectors to KNTKY, thence . . .  
**TAKEOFF RUNWAYS 26L/R, 27:** Climb on heading 267° to 600 for RADAR vectors to KNTKY, thence . . .  
**TAKEOFF RUNWAYS 33L/R:** Climb on heading 329° to 600 for RADAR vectors to KNTKY, thence . . .

. . . on track 032° to PEETY, then on track 032° to DARTR, then on track 031° to MUSIQ, then on track 031° to CLAVN, then on track 031° to VELCO, then on track 031° to ENJOY, then on track 031° to LURIC, then on (transition). Maintain 16000 or as assigned by ATC. Expect filed altitude 10 minutes after departure.

HAWES TRANSITION (LURIC8.HAWES)

ORRTH TRANSITION (LURIC8.ORRTH)



NOTE: Chart not to scale.

SC-5, 28 NOV 2024 to 26 DEC 2024

SC-5, 28 NOV 2024 to 26 DEC 2024

# LURIC EIGHT DEPARTURE (RNAV)

(LURIC8.LURIC) 07OCT21

HOUSTON, TEXAS

GEORGE BUSH INTCNTL/HOUSTON (IAH)