

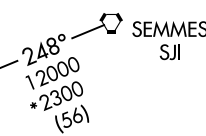
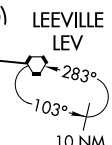
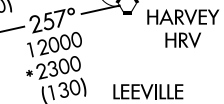
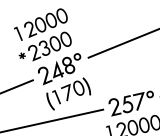
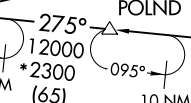
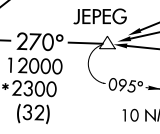
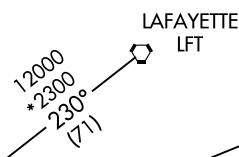
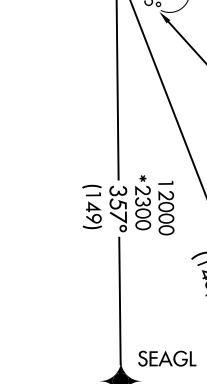
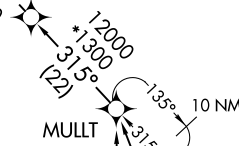
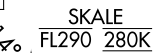
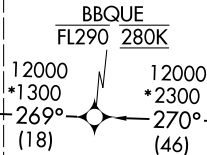
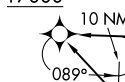
RNAV 1 - DME/DME/IRU or GPS.

RADAR required.

HOUSTON APP CON  
119.625 226.675  
D-ATIS  
124.05

See following page for arrival routes.

LINKK  
FL200 280K  
17000



- NOTE: Jet and turboprop aircraft only.
- NOTE: Fly the runway 8R/9 transition; Houston Approach Control may assign a different transition on initial contact.
- NOTE: Corresponding RNAV STAR is LINKK. Expect LINKK when IAH is landing west.
- NOTE: Jet aircraft descend via mach number until intercepting 280K. Maintain 280K until slowed by the STAR.
- NOTE: GPS required for KELPP, PEGLG and SEAGL Transitions.

- GIRLY TRANSITION (GIRLY.NNC EE2)
- HARVEY TRANSITION (HRV.NNC EE2)
- JEPEG TRANSITION (JEPEG.NNC EE2)
- KELPP TRANSITION (KELPP.NNC EE2)
- LAFAYETTE TRANSITION (LFT.NNC EE2)
- LEEVILLE TRANSITION (LEV.NNC EE2)
- MULLT TRANSITION (MULLT.NNC EE2)
- PEGLG TRANSITION (PEGLG.NNC EE2)
- SEAGL TRANSITION (SEAGL.NNC EE2)
- SEMMES TRANSITION (SJJ.NNC EE2)

(NARRATIVE ON FOLLOWING PAGE)  
(CONTINUED ON FOLLOWING PAGE)

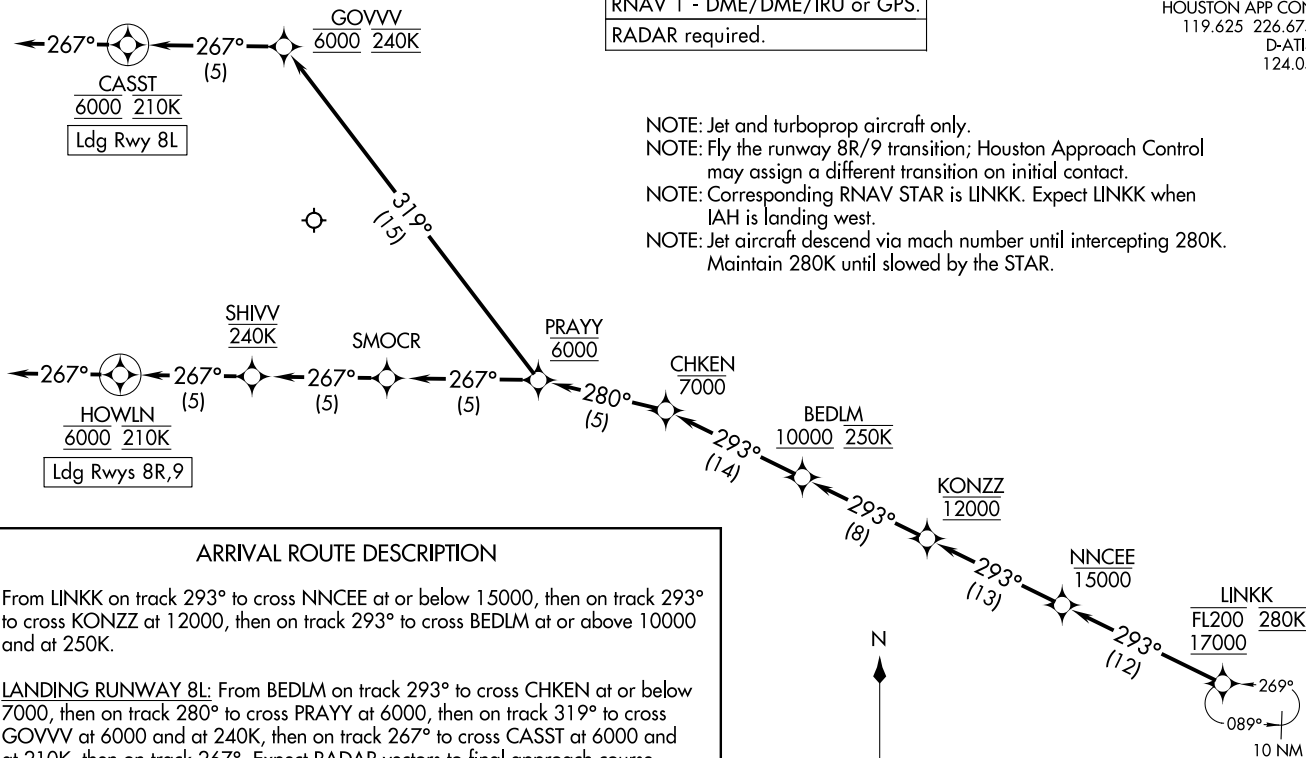
NOTE: Chart not to scale.

NANCEE TWO ARRIVAL (RNAV) Transition Routes  
(LINKK, NANCEE2) 30NOV23  
HOUSTON, TEXAS  
GEORGE BUSH INTCNL/HOUSTON (IAH)

(LINKK, NANCEE2) 23334  
NANCEE TWO ARRIVAL (RNAV) Transition Routes  
AL-5461 (FAA)  
GEORGE BUSH INTCNL/HOUSTON (IAH)  
HOUSTON, TEXAS

RNAV 1 - DME/DME/IRU or GPS.  
RADAR required.

HOUSTON APP CON  
119.625 226.675  
D-ATIS  
124.05



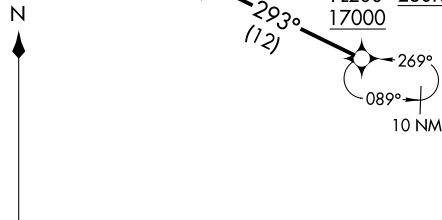
NOTE: Jet and turboprop aircraft only.  
NOTE: Fly the runway 8R/9 transition; Houston Approach Control may assign a different transition on initial contact.  
NOTE: Corresponding RNAV STAR is LINKK. Expect LINKK when IAH is landing west.  
NOTE: Jet aircraft descend via mach number until intercepting 280K. Maintain 280K until slowed by the STAR.

ARRIVAL ROUTE DESCRIPTION

From LINKK on track 293° to cross NNCEE at or below 15000, then on track 293° to cross KONZZ at 12000, then on track 293° to cross BEDLM at or above 10000 and at 250K.

**LANDING RUNWAY 8L:** From BEDLM on track 293° to cross CHKEN at or below 7000, then on track 280° to cross PRAYY at 6000, then on track 319° to cross GOVVV at 6000 and at 240K, then on track 267° to cross CASST at 6000 and at 210K, then on track 267°. Expect RADAR vectors to final approach course.

**LANDING RUNWAYS 8R, 9:** From BEDLM on track 293° to cross CHKEN at or below 7000, then on track 280° to cross PRAYY at 6000, then on track 267° to cross SMOCR, then on track 267° to cross SHIVV at 240K, then on track 267° to cross HOWLN at 6000 and at 210K, then on track 267°. Expect RADAR vectors to final approach course.



NOTE: Chart not to scale.

LNKKN>NNCEE2) 23334  
30NOV23

NNCEE TWO ARRIVAL (RNAV) Arrival Routes

HOUSTON, TEXAS  
GEORGE BUSH INTCONTL/HOUSTON (IAH)

(LINKK>NNCEE2) 23334  
LNKKN>NNCEE2) Arrival Routes

AL-5461 (FAA)  
GEORGE BUSH INTCONTL/HOUSTON (IAH)  
HOUSTON, TEXAS