

RIICE ONE ARRIVAL

Transition Routes

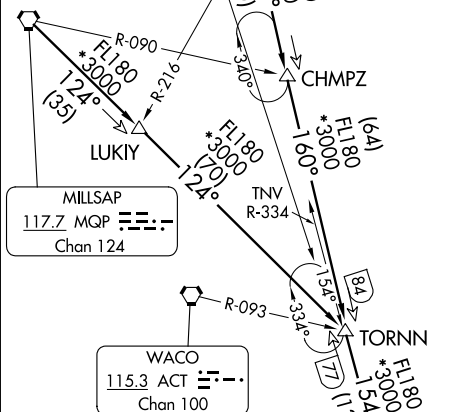
HOUSTON, TEXAS

HOUSTON APP CON
124.35 316.15
CXO ATIS
118.325
DWH ATIS
128.375
IAH D-ATIS
124.05

MAVERICK
113.1 TTT
Chan 78

COWBOY
116.2 CVE
Chan 109

RADAR required



BILEE TRANSITION (BILEE.RIICE1): From over BILEE on TNV R-334 to HOMRN, then on IAH R-313 to RIICE. Thence. . . .

COLLEGE STATION TRANSITION (CLL.RIICE1): From over CLL VORTAC on CLL R-076 to BAZBL, then on IAH R-313 to RIICE. Thence. . . .

COWBOY TRANSITION (CVE.RIICE1): From over CVE VOR/DME on CVE R-160 to TORNN, then on TNV R-334 to HOMRN, then on IAH R-313 to RIICE. Thence. . . .

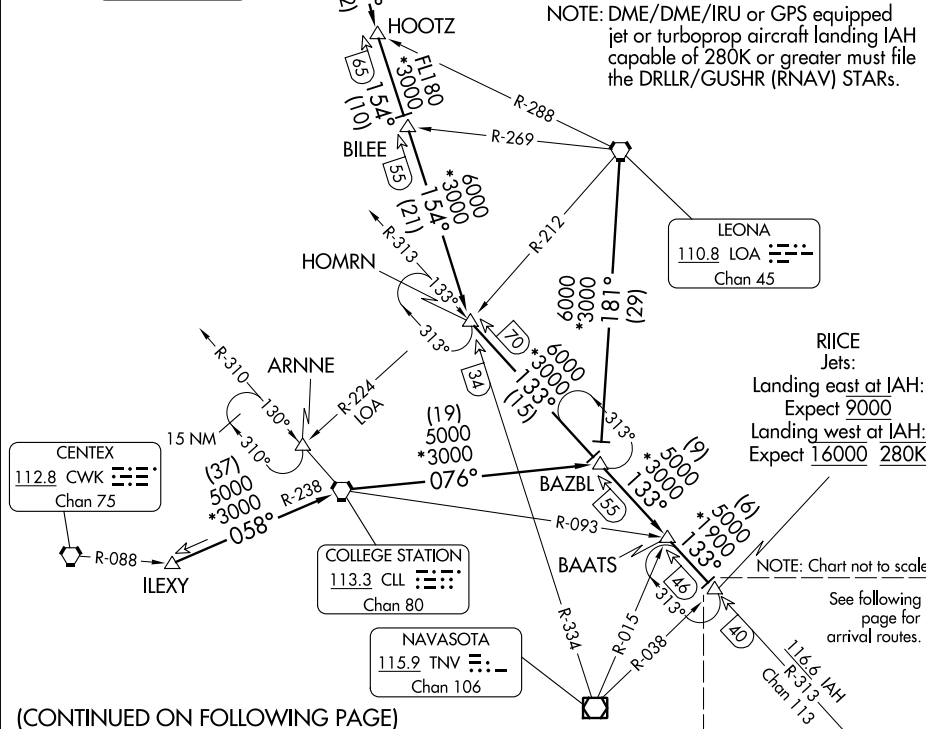
IILEXY TRANSITION (IILEXY.RIICE1): From over IILEXY on CLL R-238 to CLL VORTAC, then on CLL R-076 to BAZBL, then on IAH R-313 to RIICE. Thence. . . .

LEONA TRANSITION (LOA.RIICE1): From over LOA VORTAC on LOA R-181 to BAZBL, then on IAH R-313 to RIICE. Thence. . . .

MILLSAP TRANSITION (MQP.RIICE1): From over MQP VORTAC on MQP R-124 to TORNN, then on TNV R-334 to HOMRN, then on IAH R-313 to RIICE. Thence. . . .

TORNNT TRANSITION (TORNNT.RIICE1): From over TORNNT on TNV R-334 to HOMRN, then on IAH R-313 to RIICE. Thence. . . .

NOTE: DME/DME/IRU or GPS equipped jet or turboprop aircraft landing IAH capable of 280K or greater must file the DRLLR/GUSHR (RNAV) STARS.



RIICE
Jets:
Landing east at IAH:
Expect 9000
Landing west at IAH:
Expect 16000 280K

NOTE: Chart not to scale.
See following page for arrival routes.

(CONTINUED ON FOLLOWING PAGE)

RIICE ONE ARRIVAL

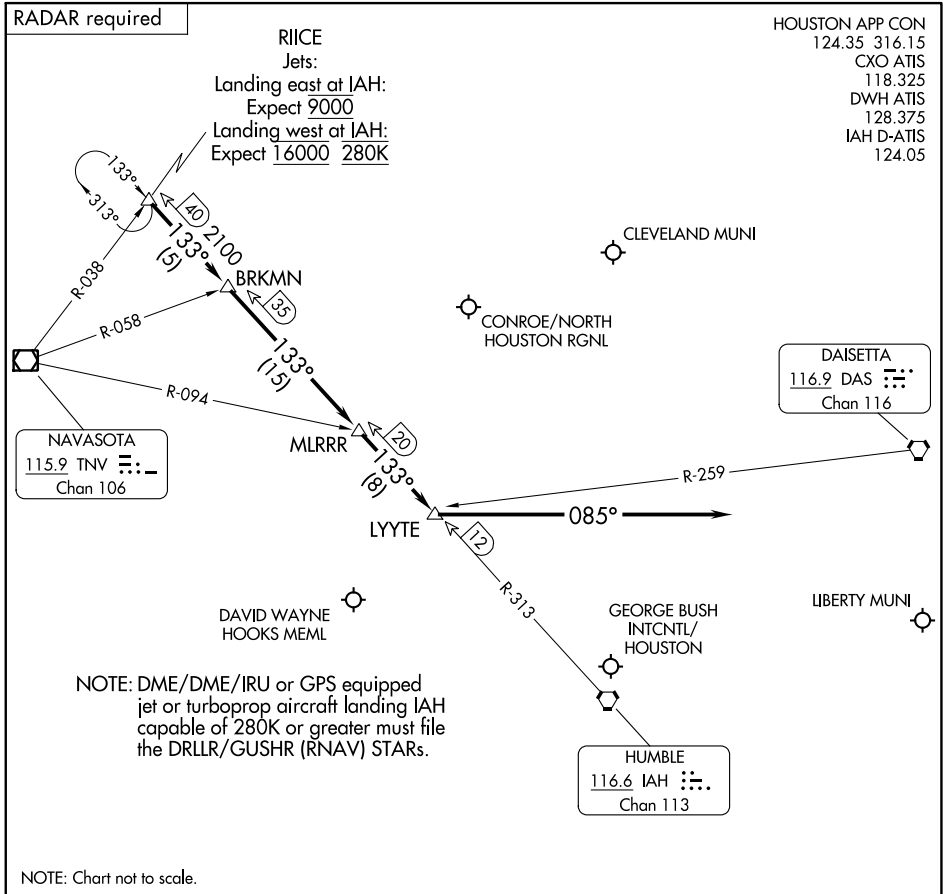
Transition Routes

HOUSTON, TEXAS

RIICE ONE ARRIVAL

Arrival Routes

HOUSTON, TEXAS



SC-5, 28 NOV 2024 to 26 DEC 2024

SC-5, 28 NOV 2024 to 26 DEC 2024

ARRIVAL ROUTE DESCRIPTION

GEORGE BUSH INTCNTL/HOUSTON (IAH):

... From over RIICE on IAH R-313 to BRKMN, to MLRRR, to LYYTE.

LANDING RUNWAYS 26L/R or 27:

... Fly heading 085° for vectors to final approach course.

LANDING ALL OTHER RUNWAYS:

... Expect vectors to final approach course at or prior to LYYTE.

FOR ALL OTHER AIRPORTS:

... From over RIICE on IAH R-313 to BRKMN, thence as depicted to LYYTE. Expect vectors to final approach course at or prior to LYYTE.

RIICE ONE ARRIVAL

Arrival Routes

HOUSTON, TEXAS