

WAAS CH 69626 W27A	APP CRS 267°	Rwy Idg 10000 TDZE 86 Apt Elev 96
--	------------------------	--

RNAV (GPS) Z RWY 27

GEORGE BUSH INTCNL/HOUSTON (IAH)

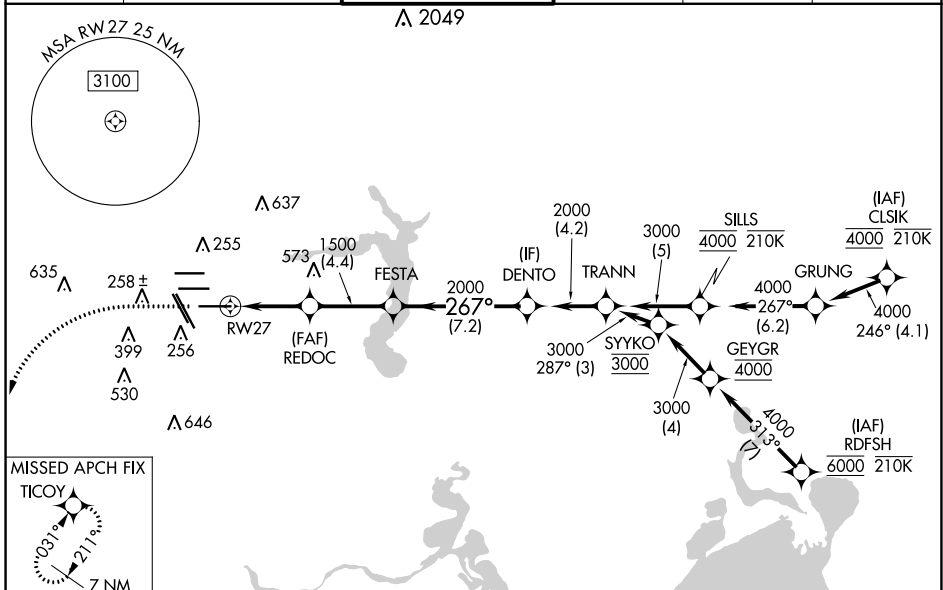
RNP APCH.

Simultaneous approach authorized. LNAV procedure NA during simultaneous operations. Use of FD or AP required during simultaneous operations. For uncompensated Baro-VNAV systems, LNAV/VNAV NA below -2°C or above 54°C. For inop ALS, increase LPV Cat E visibility to RVR 4000, LNAV/VNAV Cat E visibility to RVR 6000, and LNAV Cats C, D and E visibility to 1 $\frac{3}{8}$ SM.

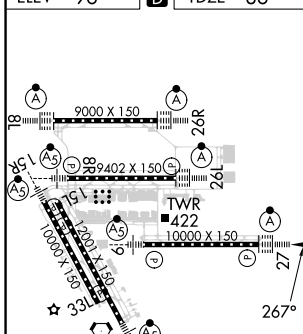


MISSED APPROACH: Climb to 560 then climbing left turn to 3100 direct TICOY and hold.

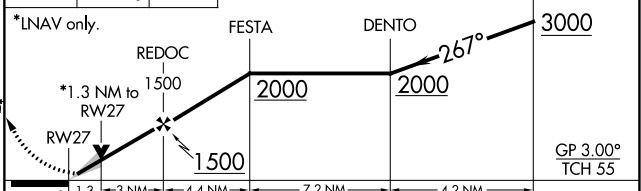
D-ATIS 124.05	HOUSTON APP CON 120.05 379.1 EAST 124.35 316.15 WEST	HOUSTON TOWER 135.15 290.2	GND CON 118.575	CLNC DEL 128.1	CPDLC
-------------------------	--	--------------------------------------	---------------------------	--------------------------	-------



ELEV 96	D	TDZE 86
---------	----------	---------



560 3100 TICOY
 ↑ ↻ ✦
 VGSI and RNAV glidepath not coincident (VGSI Angle 3.00/TCH 70).



CATEGORY	A	B	C	D	E
LPV	DA	286/18		200 (200- $\frac{1}{2}$)	
LNAV/VNAV	DA	476/35		390 (400- $\frac{5}{8}$)	
LNAV MDA	560/24	474 (500- $\frac{1}{2}$)		560/50	474 (500-1)

TDZ/CL Rwy 8R, 8L, 15R, 26R, 26L, 27 and 33L
 HIRL all Rwy

SC-5, 28 NOV 2024 to 26 DEC 2024

SC-5, 28 NOV 2024 to 26 DEC 2024