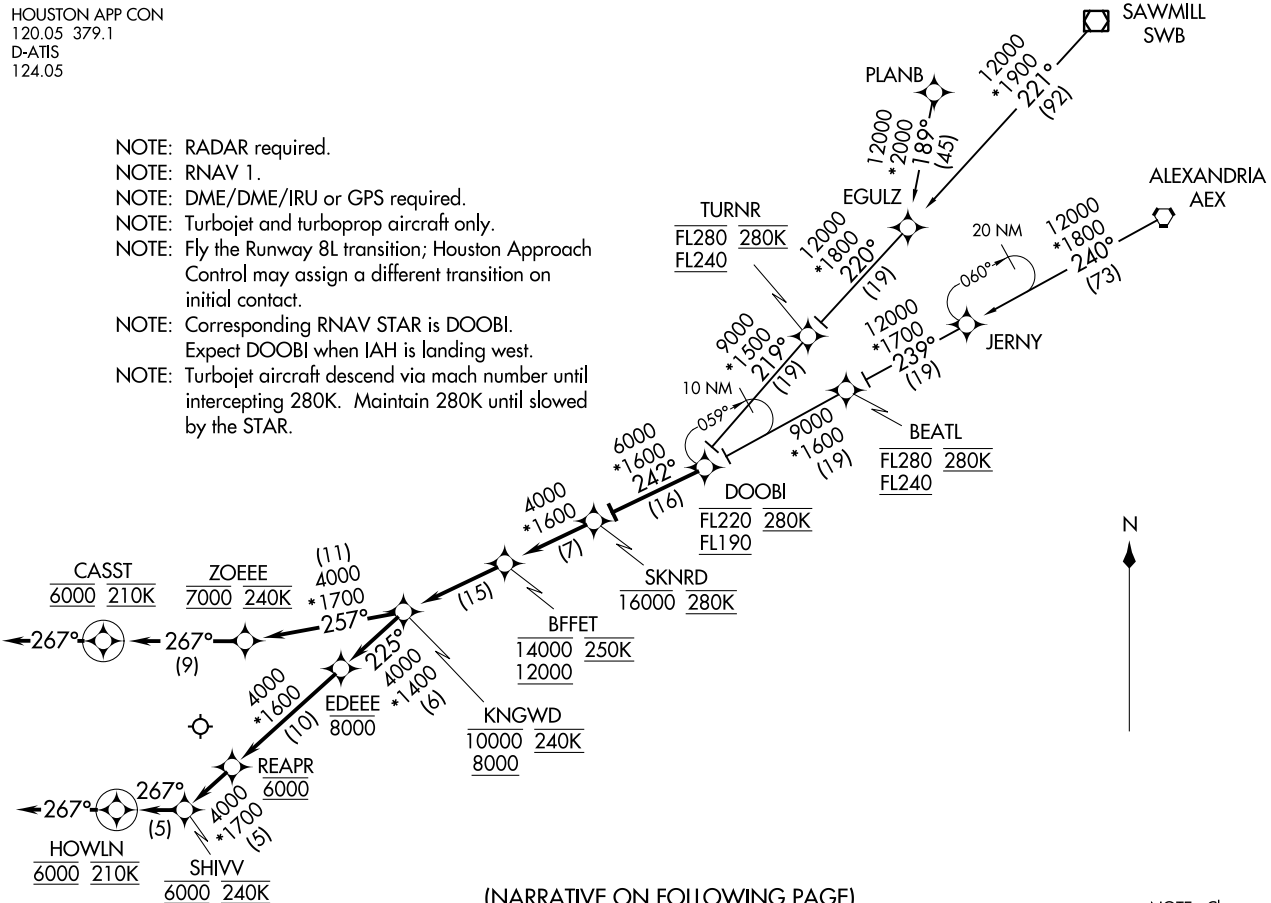


HOUSTON APP CON
120.05 379.1
D-ATIS
124.05

- NOTE: RADAR required.
- NOTE: RNAV 1.
- NOTE: DME/DME/IRU or GPS required.
- NOTE: Turbojet and turboprop aircraft only.
- NOTE: Fly the Runway 8L transition; Houston Approach Control may assign a different transition on initial contact.
- NOTE: Corresponding RNAV STAR is DOOBI.
- NOTE: Expect DOOBI when IAH is landing west.
- NOTE: Turbojet aircraft descend via mach number until intercepting 280K. Maintain 280K until slowed by the STAR.



(NARRATIVE ON FOLLOWING PAGE)

NOTE: Chart not to scale.

SKNRD FOUR ARRIVAL (RNAV)
(DOOBI, SKNRD4) 25JUN15

HOUSTON, TEXAS
GEORGE BUSH INTCNL/HOUSTON (IAH)

(DOOBI, SKNRD4) 2111Z
SKNRD FOUR ARRIVAL (RNAV) AL-5461 (FAA)
HOUSTON, TEXAS
GEORGE BUSH INTCNL/HOUSTON (IAH)

ARRIVAL ROUTE DESCRIPTION

ALEXANDRIA TRANSITION (AEX.SKNRD4):

PLANB TRANSITION (PLANB.SKNRD4):

SAWMILL TRANSITION (SWB.SKNRD4):

From DOOBI on track 242° to cross SKNRD at or below 16000 and at 280K.

LANDING RUNWAY 8L: From SKNRD on track 242° to cross BFFET at or above 12000 and, at or below 14000 and at 250K, then on track 242° to cross KINGWD at or above 8000, at or below 10000 and at 240K, then on track 257° to cross ZOEEE at 7000 and at 240K, then on track 267° to cross CASST at 6000 and at 210K, then on track 267°. Expect RADAR vectors to final approach course.

LANDING RUNWAYS 8R, 9: From SKNRD on track 242° to cross BFFET at or above 12000, at or below 14000 and at 250K, then on track 242° to cross KINGWD at or above 8000, at or below 10000 and at 240K, then on track 225° to cross EDEEE at or below 8000, then on track 225° to cross REAPR at 6000, then on track 225° to cross SHIVV at 6000 and at 240K, then on track 267° to cross HOWLN at 6000 and at 210K, then on track 267°. Expect RADAR vectors to final approach course.

SC-5, 28 NOV 2024 to 26 DEC 2024

SC-5, 28 NOV 2024 to 26 DEC 2024