

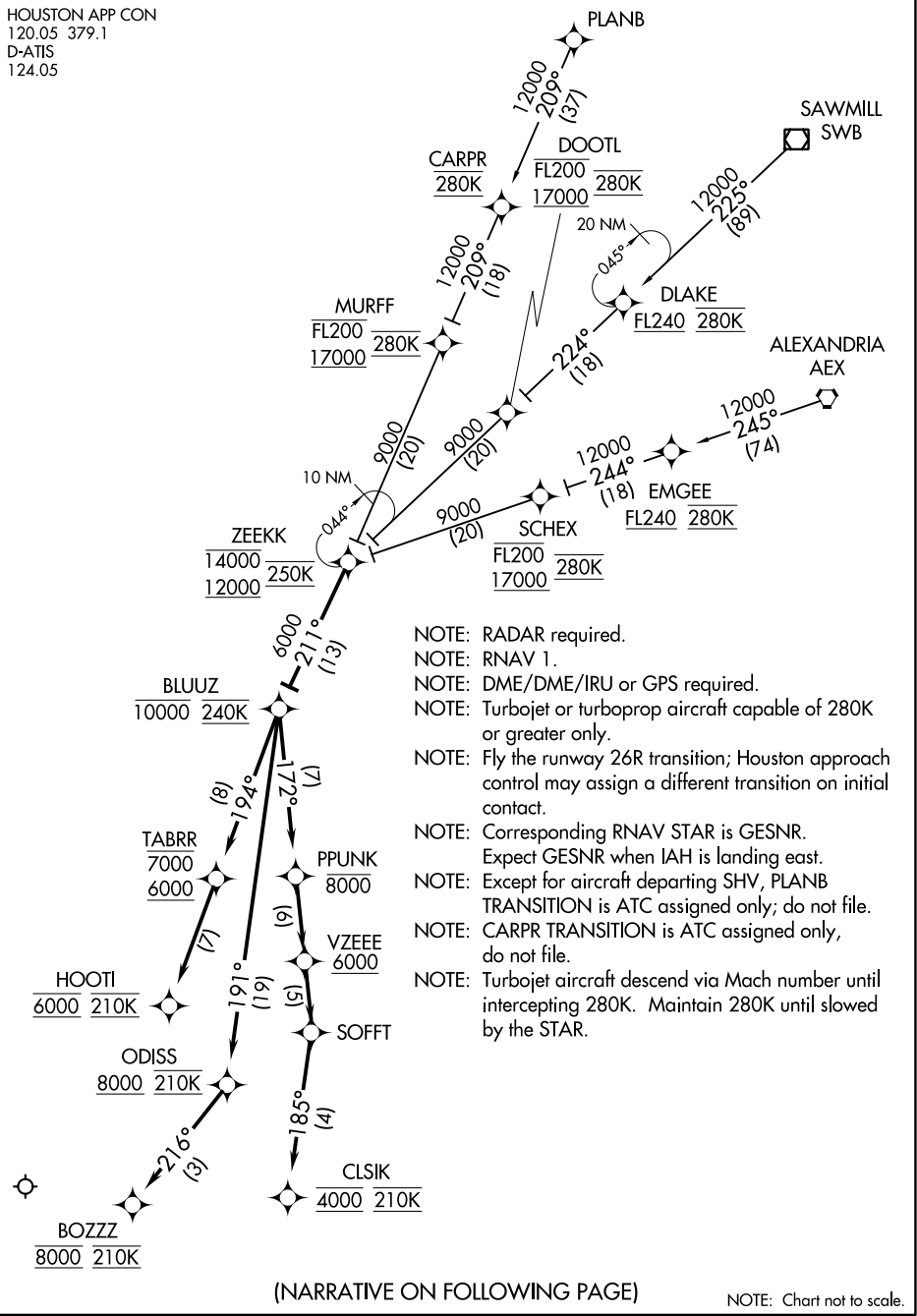
(ZEEKK.ZEEKK2) 21112

GEORGE BUSH INTCNL/HOUSTON (IAH)

ZEEKK TWO ARRIVAL (RNAV) AL-5461 (FAA)

HOUSTON, TEXAS

HOUSTON APP CON
120.05 379.1
D-ATIS
124.05



- NOTE: RADAR required.
- NOTE: RNAV 1.
- NOTE: DME/DME/IRU or GPS required.
- NOTE: Turbojet or turboprop aircraft capable of 280K or greater only.
- NOTE: Fly the runway 26R transition; Houston approach control may assign a different transition on initial contact.
- NOTE: Corresponding RNAV STAR is GESNR. Expect GESNR when IAH is landing east.
- NOTE: Except for aircraft departing SHV, PLANB TRANSITION is ATC assigned only; do not file.
- NOTE: CARPR TRANSITION is ATC assigned only, do not file.
- NOTE: Turbojet aircraft descend via Mach number until intercepting 280K. Maintain 280K until slowed by the STAR.

(NARRATIVE ON FOLLOWING PAGE)

NOTE: Chart not to scale.

SC-5, 28 NOV 2024 to 26 DEC 2024

SC-5, 28 NOV 2024 to 26 DEC 2024

ZEEKK TWO ARRIVAL (RNAV)

HOUSTON, TEXAS

(ZEEKK.ZEEKK2) 07DEC17

GEORGE BUSH INTCNL/HOUSTON (IAH)

ARRIVAL ROUTE DESCRIPTION

ALEXANDRIA TRANSITION (AEX.ZEEKK2)

CARPR TRANSITION (CARPR.ZEEKK2)

PLANB TRANSITION (PLANB.ZEEKK2)

SAWMILL TRANSITION (SWB.ZEEKK2)

From ZEEKK on track 211° to cross BLUUZ at or below 10000 and at 240K.

LANDING RUNWAY 26L: From BLUUZ on track 191° to cross ODISS at or above 8000 and at 210K, then on track 216° to cross BOZZZ at 8000 and at 210K. Expect ILS or LOC RWY 26L approach.

LANDING RUNWAY 26R: From BLUZZ on track 194° to cross TABRR between 6000 and 7000, then on track 194° to cross HOOTI at 6000 and at 210K. Expect ILS or LOC RWY 26R approach.

LANDING RUNWAY 27: From BLUUZ on track 172° to cross PPUNK at or below 8000, then on track 172° to cross VZEEE at or above 6000, then on track 172° to SOFFT, then on track 185° to cross CLSIK at 4000 and at 210K. Expect ILS or LOC RWY 27 approach.

SC-5, 28 NOV 2024 to 26 DEC 2024

SC-5, 28 NOV 2024 to 26 DEC 2024