

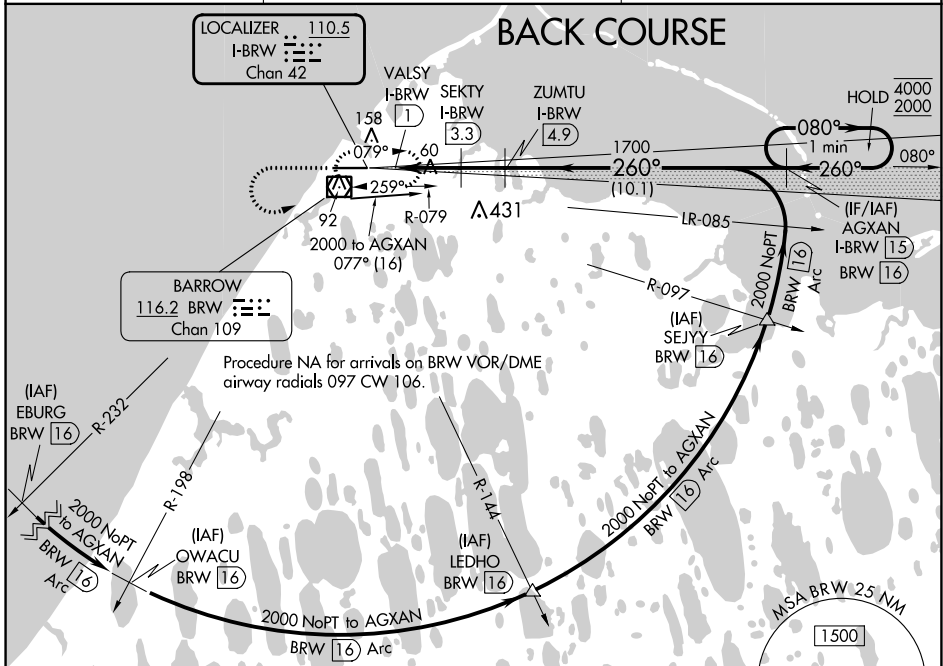
LOC/DME I-BRW 110.5 Chan 42	APP CRS 260°	Rwy Idg 5900 TDZE 46 Apt Elev 49
---	------------------------	---

LOC BC RWY 26

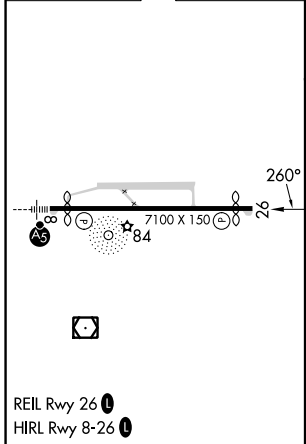
WILEY POST-WILL ROGERS MEML (BRW)(PABR)

DME required.	MISSED APPROACH: Climb to 1600 then climbing left turn to 2000 direct BRW VOR/DME and hold, continue climb-in-hold to 2000.
<p>Circling NA for Cat A north of Rwy 8-26.</p>	

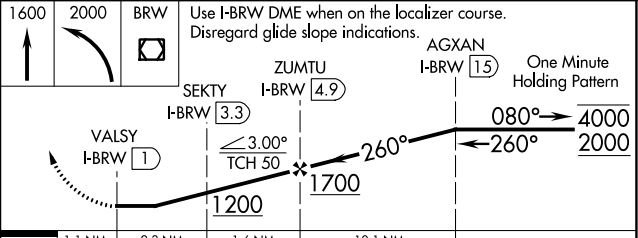
AFIS 132.15	ANCHORAGE CENTER 135.3 239.25	BARROW RADIO 123.6 (CTAF)
-----------------------	---	-------------------------------------



ELEV 49		TDZE 46
----------------	--	----------------



1600	2000	BRW	Use I-BRW DME when on the localizer course. Disregard glide slope indications.
------	------	-----	--



CATEGORY	A	B	C	D
S-26		360-1 $\frac{3}{8}$	314 (400-1 $\frac{3}{8}$)	
CIRCLING	460-1 $\frac{3}{8}$ 411 (500-1 $\frac{3}{8}$)	500-1 $\frac{3}{8}$ 451 (500-1 $\frac{3}{8}$)	500-1 $\frac{1}{2}$ 451 (500-1 $\frac{1}{2}$)	680-2 631 (700-2)

LOC BC RWY 26

AK, 31 OCT 2024 to 26 DEC 2024

AK, 31 OCT 2024 to 26 DEC 2024