

WAAS CH 86915 W08A	APP CRS 080°	Rwy Idg TDZE Apt Elev	5900 49 49
--	------------------------	-----------------------------	---------------------------------------

RNAV (GPS) RWY 8

WILEY POST-WILL ROGERS MEML (BRW)(PABR)

RNP APCH-GPS.

⚠ Inop table does not apply to LPV and LNAV/VNAV all Cats.
For uncompensated Baro-VNAV systems, LNAV/VNAV NA below -18°C or above 54°C. Circling NA for Cat A north of Rwy 8-26.

MALSR

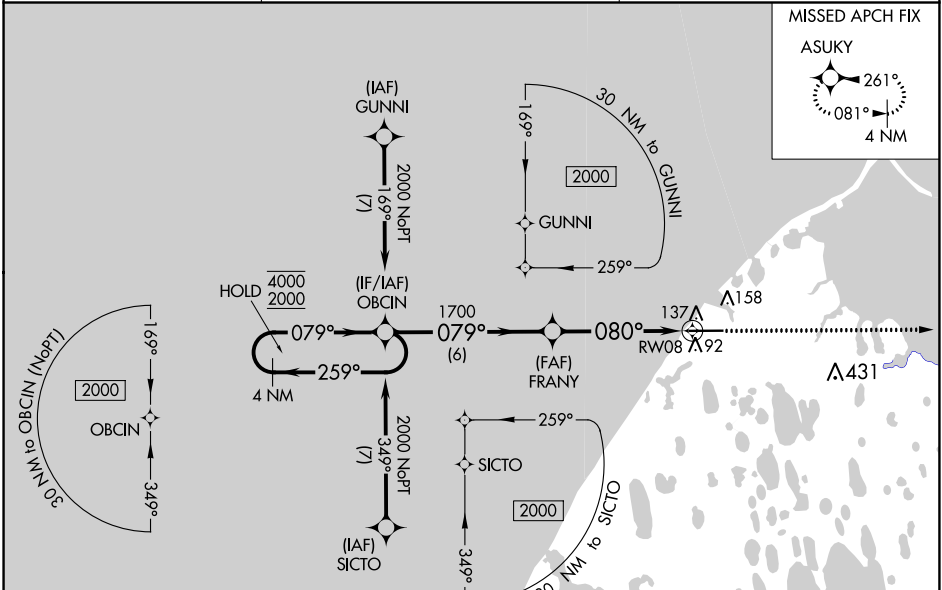


MISSED APPROACH: Climb to 2000 direct ASUKY and hold.

AFIS
132.15

ANCHORAGE CENTER
135.3 239.25

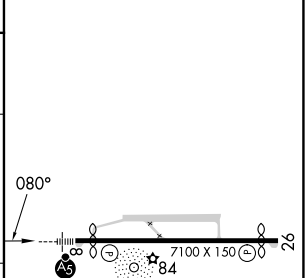
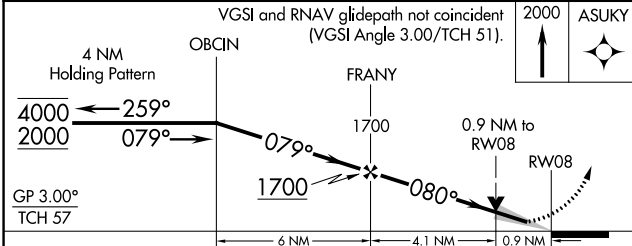
BARROW RADIO
123.6 (CTAF) 0



AK, 31 OCT 2024 to 26 DEC 2024

AK, 31 OCT 2024 to 26 DEC 2024

ELEV 49	D	TDZE 49
---------	----------	---------



CATEGORY	A	B	C	D
LPV DA		249/40	200 (200-¾)	
LNAV/VNAV DA		299/40	250 (300-¾)	
LNAV MDA		400/40	351 (400-¾)	
C CIRCLING	420-1 371 (400-1)	500-1 451 (500-1)	500-1½ 451 (500-1½)	680-2 631 (700-2)

REIL Rwy 26 0
HIRL Rwy 8-26 0

RNAV (GPS) RWY 8