

NDB/DME OLT <b>346</b>	APP CRS <b>255°</b>	Rwy Idg TDZE Apt Elev	<b>5001</b> <b>113</b> <b>113</b>
Chan <b>106 (115.9)</b>			

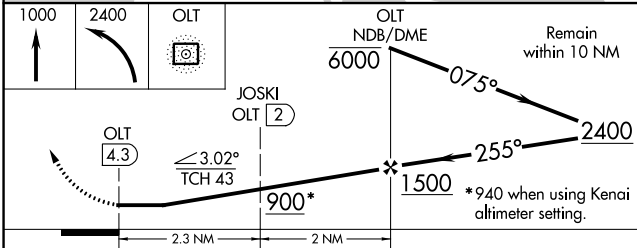
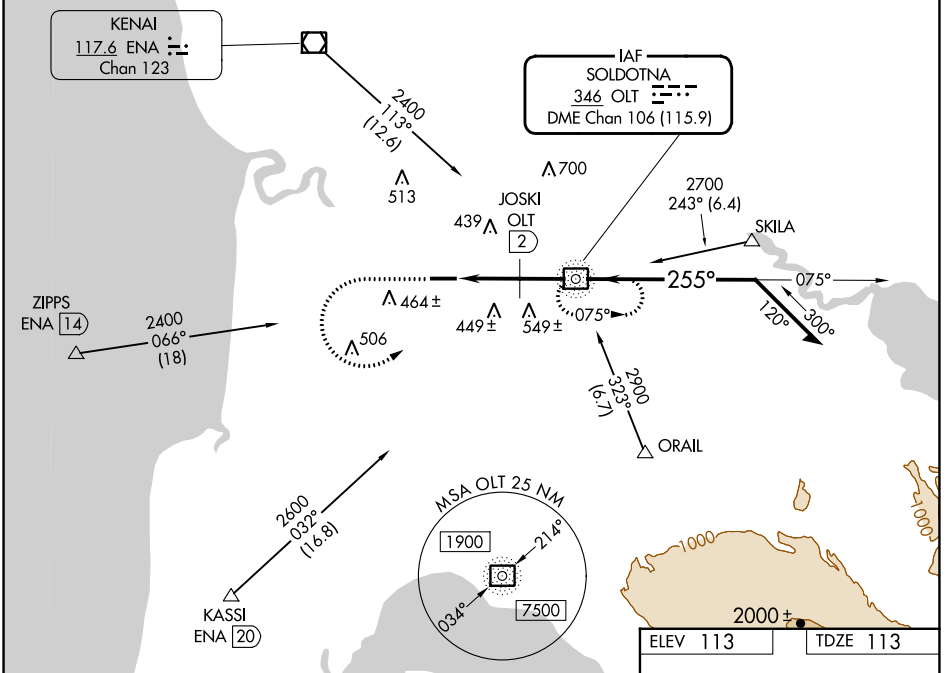
# NDB RWY 25

SOLDOTNA (SXQ)(PASX)

**⚠** Circling NA to Rwy 7S and 25S. Circling Rwy 7 NA at night.

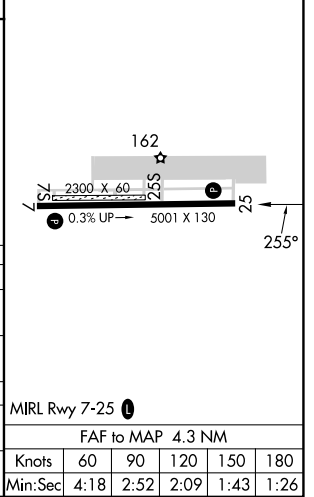
**MISSED APPROACH:** Climb to 1000 then climbing left turn to 2400 direct OLT NDB and hold.

AWOS-3P <b>135.45</b>	ANCHORAGE CENTER <b>125.7 379.1</b>	KENAI RADIO <b>122.35</b>	CTAF <b>122.5</b>
--------------------------	--	------------------------------	----------------------



ELEV 113	TDZE 113
----------	----------

CATEGORY	A	B	C	D
S-25	900-1 787 (800-1)	900-1¼ 787 (800-1¼)	900-2½ 787 (800-2½)	787 (800-2½)
<b>C</b> CIRCLING	900-1 787 (800-1)	900-1¼ 787 (800-1¼)	900-2½ 787 (800-2½)	980-2¾ 867 (900-2¾)
JOSKI FIX MINIMUMS				
S-25	760-1 647 (700-1)	647 (700-1)	760-1⅞ 647 (700-1⅞)	647 (700-1⅞)
<b>C</b> CIRCLING	860-1 747 (800-1)	747 (800-1)	860-2¼ 747 (800-2¼)	980-2¾ 867 (900-2¾)



AK, 31 OCT 2024 to 26 DEC 2024

AK, 31 OCT 2024 to 26 DEC 2024