

WAAS CH <b>45533</b> W <b>28A</b>	APP CRS <b>282°</b>	Rwy Idg TDZE Apt Elev	<b>3501</b> <b>941</b> <b>941</b>
---	------------------------	-----------------------------	---

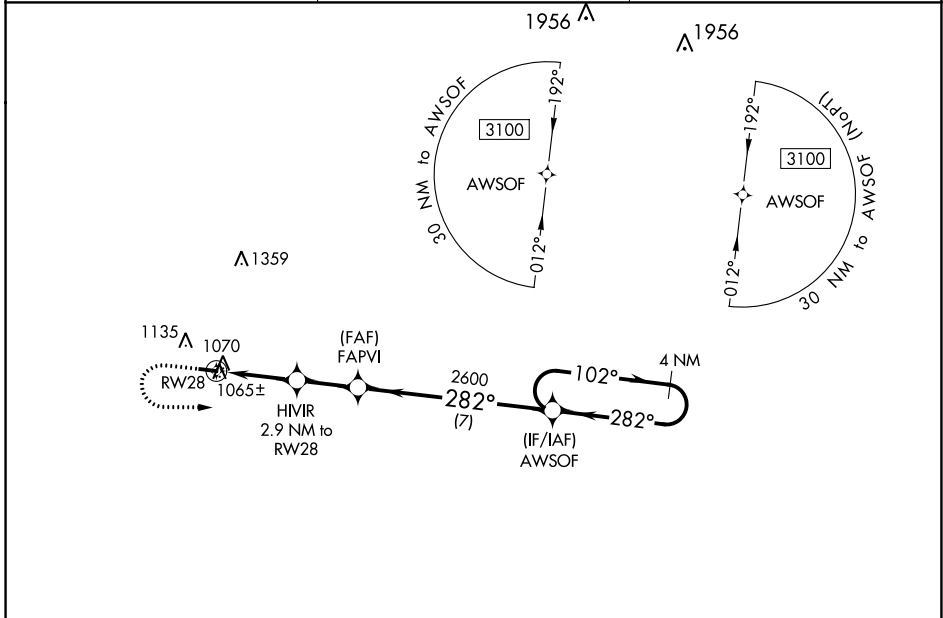
# RNAV (GPS) RWY 28

BROOKS FLD (RMY)

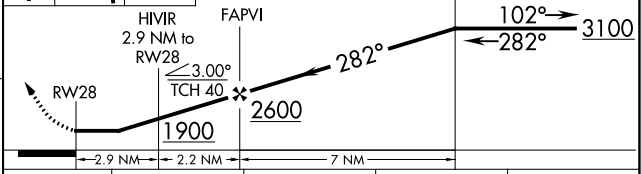
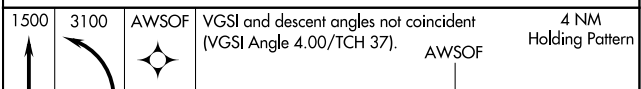
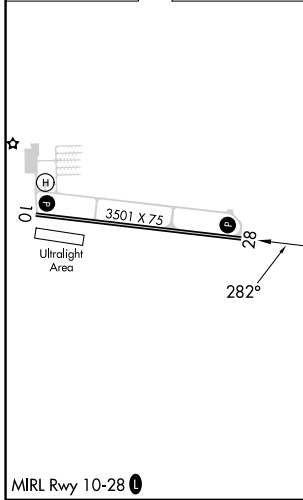
**⚠** DME/DME RNP-0.3 NA, VDP NA with Battle Creek altimeter setting. When local altimeter setting not received, use Battle Creek altimeter setting: increase all MDA 40 feet; increase LP and LNAV Cat C visibility  $\frac{1}{8}$  SM and Circling Cat C visibility  $\frac{1}{4}$  SM. Helicopter visibility reduction below  $\frac{3}{4}$  SM NA. Night landing: Rwy 10 NA.

**⚠** MISSED APPROACH: Climb to 1500 then climbing left turn to 3100 direct AWSOF and hold.

AWOS-3 <b>120.025</b>	GREAT LAKES APP CON * <b>119.2 239.25</b>	UNICOM <b>122.8 (CTAF) 0</b>
--------------------------	--	---------------------------------



ELEV 941	TDZE 941
----------	----------



CATEGORY	A	B	C	D
LP MDA	1300-1 359 (400-1)			NA
LNAV MDA	1320-1	379 (400-1)	1320-1 $\frac{1}{8}$ 379 (400-1 $\frac{1}{8}$ )	NA
CIRCLING	1440-1	499 (500-1)	1660-2 719 (800-2)	NA

EC-1, 28 NOV 2024 to 26 DEC 2024

EC-1, 28 NOV 2024 to 26 DEC 2024