


LOC I-HUV <b>109.55</b>	APP CRS <b>019°</b>	Rwy Idg <b>6506</b>
		TDZE <b>300</b>
		Apt Elev <b>303</b>

# ILS or LOC RWY 2

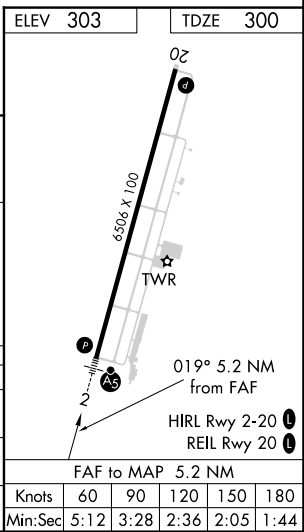
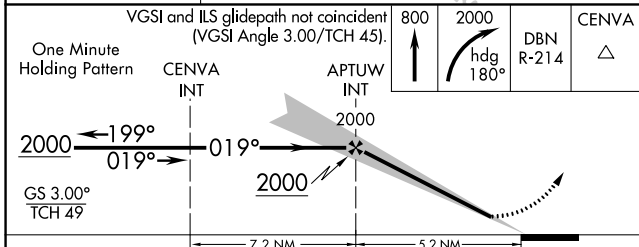
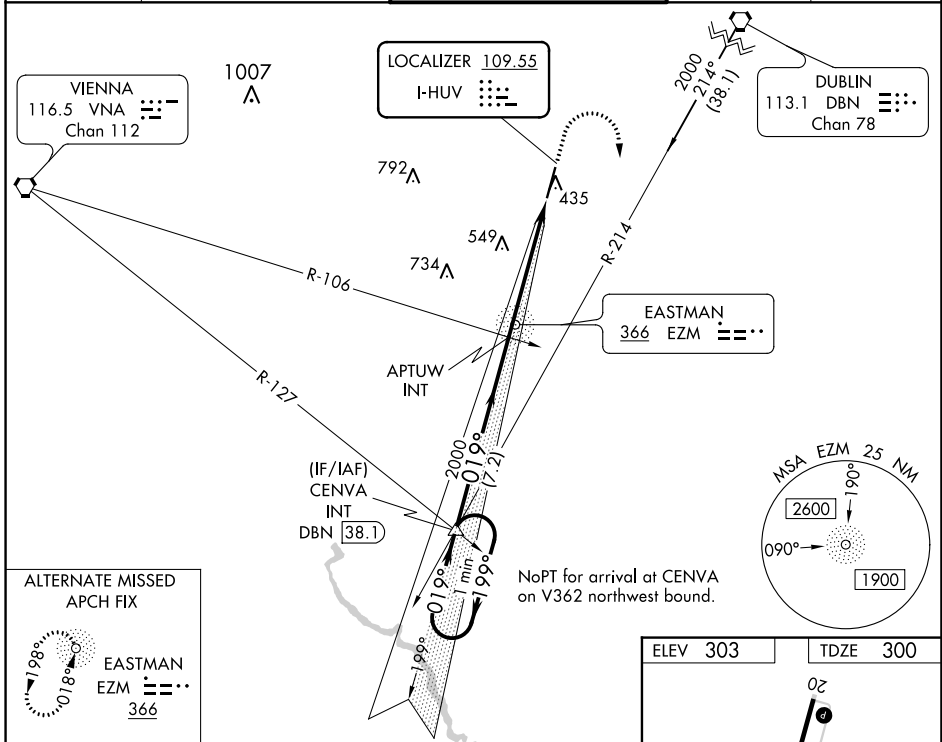
HEART OF GEORGIA RGNL (E2M)

**⚠** When local altimeter setting not received, use Dublin altimeter setting and increase all DA 52 feet and all MDA 60 feet; increase S-LOC 2 Cat C/D and Circling Cat C visibility ¼ mile.

**MALSR** 

**MISSED APPROACH:** Climb to 800 then climbing right turn to 2000 on heading 180° and DBN VORTAC R-214 to CENVA INT and hold.

ATIS <b>119.425</b>	JACKSONVILLE CENTER <b>127.575 269.025</b>	HEART OF GEORGIA TOWER ★ <b>124.55 (CTAF) 0</b>	GND CON <b>121.175</b>	UNICOM <b>122.95</b>
------------------------	---	--	---------------------------	-------------------------



CATEGORY	A	B	C	D
S-ILS 2		500-½	200 (200-½)	
S-LOC 2	820-½	520 (600-½)	820-1	520 (600-1)
<b>C</b> CIRCLING	820-1	517 (600-1)	900-1½ 597 (600-1½)	900-2 597 (600-2)

SE-4, 28 NOV 2024 to 26 DEC 2024

SE-4, 28 NOV 2024 to 26 DEC 2024