

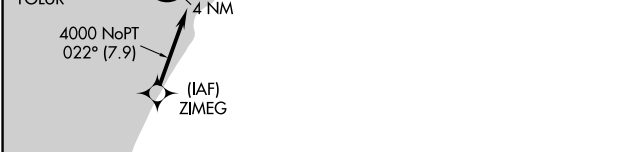
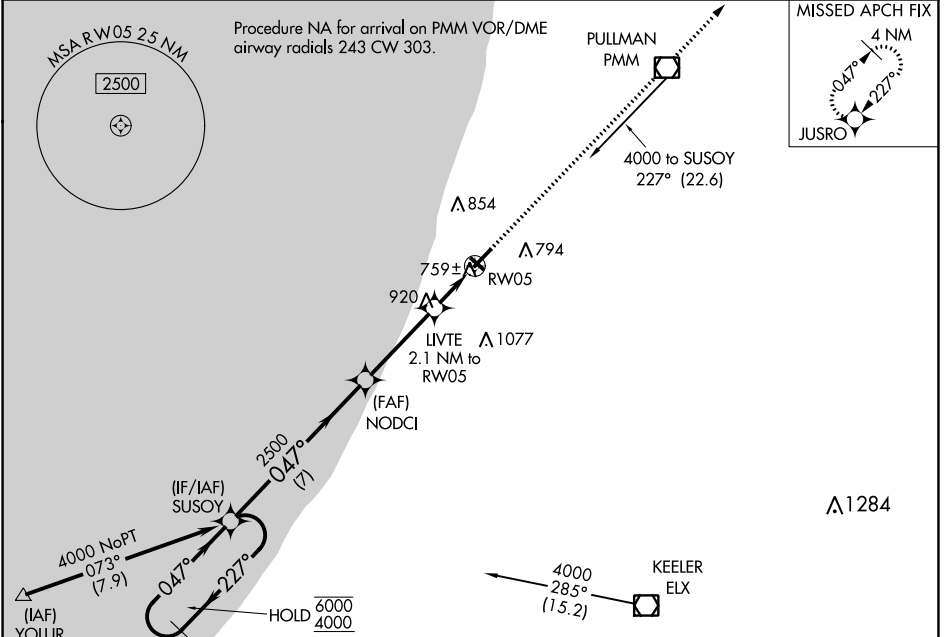
APP CRS	Rwy Idg	4800
047°	TDZE	659
	Apt Elev	666

RNAV (GPS) RWY 5

SOUTH HAVEN AREA RGNL (LWA)

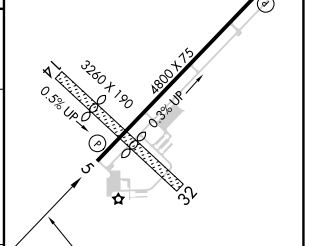
RNP APCH.	MISSED APPROACH: Climb to 4000 direct JUSRO and hold, continue climb-in-hold to 4000.
<p>▼ Circling NA to Rwys 14 and 32.</p> <p>▲ Rwy 5 helicopter visibility reduction below 3/4 SM NA.</p>	

AWOS-3 118.025	SOUTH BEND APP CON* 118.55 257.8	UNICOM 122.8 (CTAF)
--------------------------	--	-------------------------------



ELEV 666	TDZE 659
----------	----------

4 NM Holding Pattern	SUSOY	Visual Segment - Obstacles.	4000	JUSRO
6000 ← 227°		NODCI	↑	⬠
4000 → 047°		LIVTE 2.1 NM to RW05		
		0.9 NM to RW05		
		RW05		



CATEGORY	A	B	C	D
LNVA MDA	1020-1		361 (400-1)	
CIRCLING	1120-1 454 (500-1)	1140-1 474 (500-1)	1440-2 1/4 774 (800-2 1/4)	1440-2 1/2 774 (800-2 1/2)

REIL Rwys 5 and 23
MIRL Rwy 5-23

EC-1, 28 NOV 2024 to 26 DEC 2024

EC-1, 28 NOV 2024 to 26 DEC 2024