

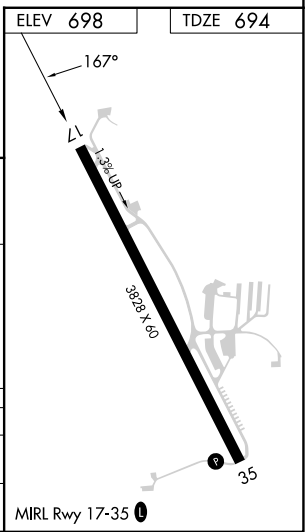
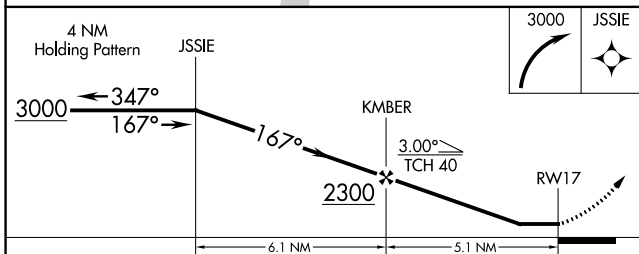
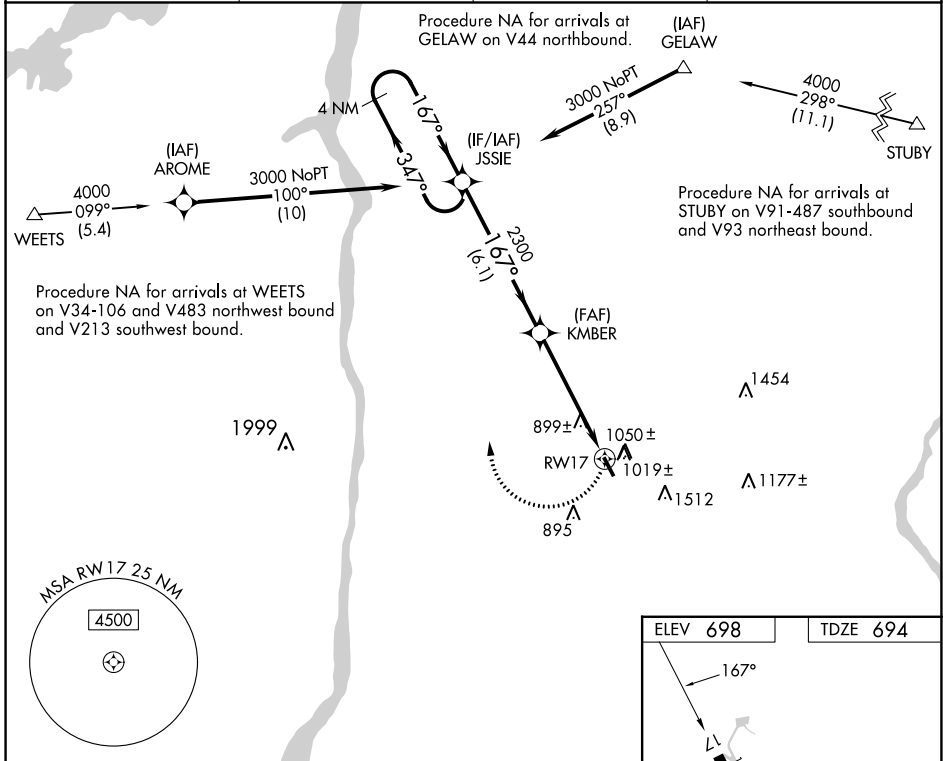
WAAS CH <b>78008</b> <b>W17A</b>	APP CRS <b>167°</b>	Rwy Idg TDZE <b>694</b> Apt Elev <b>698</b>	<b>3828</b> <b>694</b> <b>698</b>
--	------------------------	---	---

# RNAV (GPS) RWY 17

SKY ACRES (44N)

RNP APCH.		MISSED APPROACH: Climbing right turn to 3000 direct JSSIE and hold.
NA -23°C	Use Newburgh altimeter setting; when not received, procedure NA. Rwy 17 helicopter visibility reduction below 3/4 SM NA.	

SWF ASOS <b>124,575</b>	POU ASOS <b>126.75</b>	NEW YORK APP CON <b>132.75 363.1</b>	UNICOM <b>122.8 (CTAF) 0</b>
----------------------------	---------------------------	---	---------------------------------



CATEGORY	A	B	C	D
LP MDA	1240-1	546 (600-1)		NA
LNAV MDA	1360-1	666 (700-1)		NA

NE-2, 28 NOV 2024 to 26 DEC 2024

NE-2, 28 NOV 2024 to 26 DEC 2024