

WAAS CH <b>86308</b> <b>W35A</b>	APP CRS <b>347°</b>	Rwy Idg TDZE Apt Elev	<b>3828</b> <b>698</b> <b>698</b>
--	------------------------	-----------------------------	---

# RNAV (GPS) RWY 35

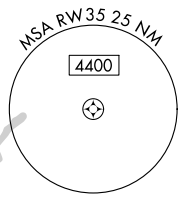
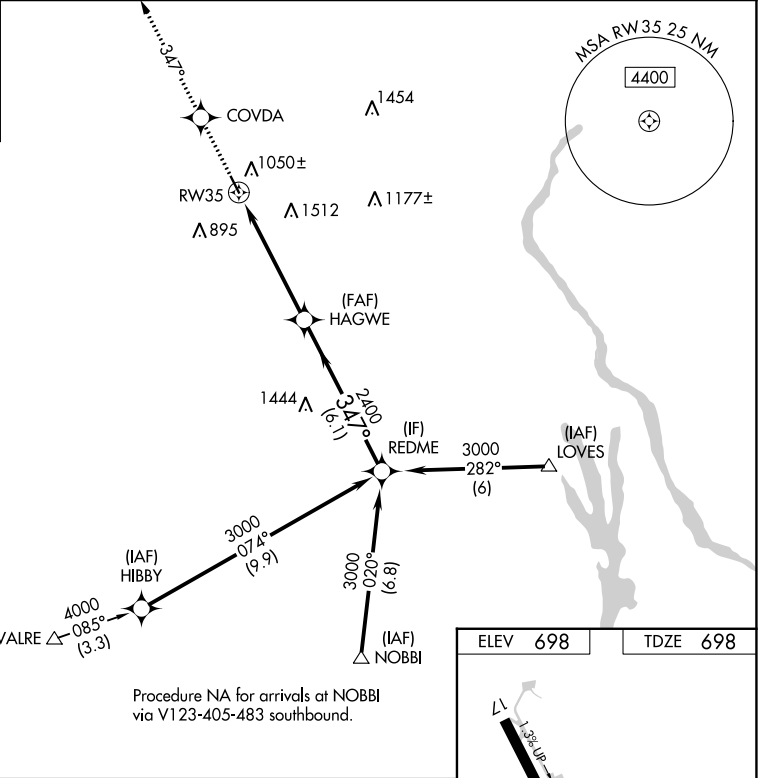
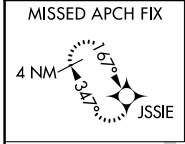
SKY ACRES (44N)

RNP APCH.

▼  
▲ NA Use Newburgh altimeter setting; when not received use Poughkeepsie altimeter setting and increase LPV DA to 1063, and all MDA 20 feet.  
☁ -23°C

MISSED APPROACH: Climb to 3000 direct COVDA and via 347° track to JSSIE and hold.

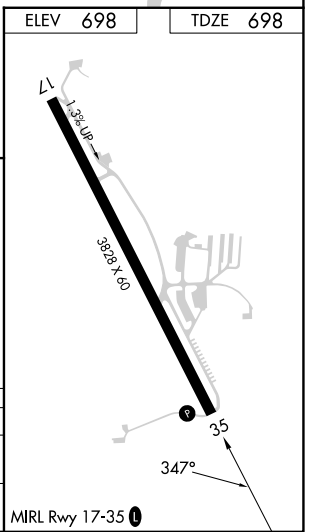
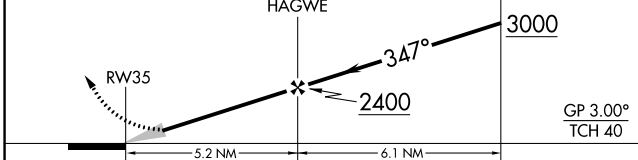
SWF ASOS <b>124.575</b>	POU ASOS <b>126.75</b>	NEW YORK APP CON <b>132.75 363.1</b>	UNICOM <b>122.8 (CTAF) 0</b>
----------------------------	---------------------------	---	---------------------------------



NE-2, 28 NOV 2024 to 26 DEC 2024

NE-2, 28 NOV 2024 to 26 DEC 2024

3000	COVDA	fr 347°	JSSIE	VGSI and RNAV glidepath not coincident (VGSI Angle 3.00/TCH 33).	REDME Procedure Turn NA
------	-------	---------	-------	--	-------------------------



CATEGORY	A	B	C	D
LPV DA	1046-1¼	348 (400-1¼)		NA
INAV MDA	1700-1¼ 1002 (1100-1¼)	1700-1½ 1002 (1100-1½)		NA