

WAAS CH 50426 W35A	APP CRS 358°	Rwy Idg 8900 TDZE 4230 Apt Elev 4230
---------------------------------	------------------------	---

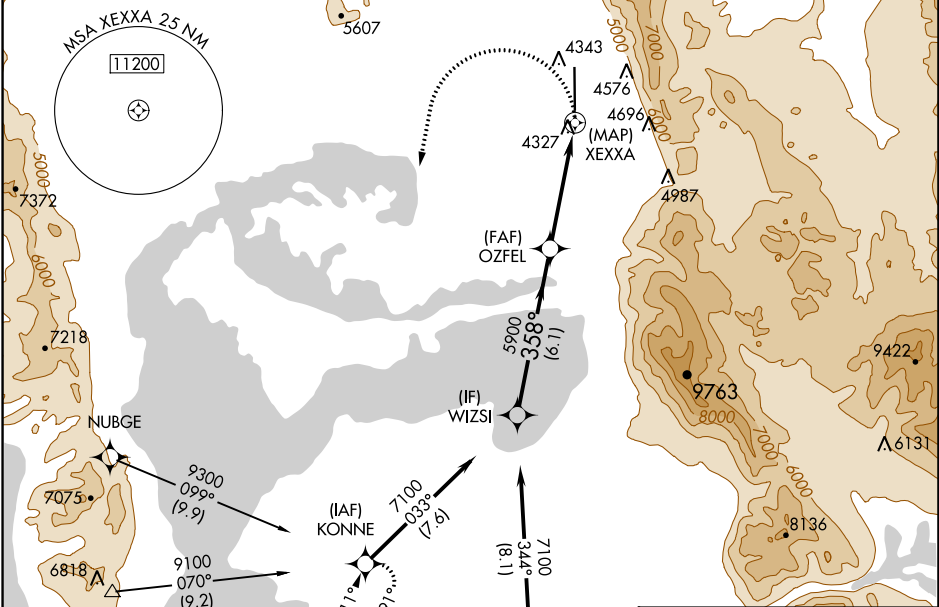
RNAV (GPS) RWY 35

BRIGHAM CITY RGNL (BMC)

⚠ When local altimeter setting not received, use Ogden altimeter setting and increase all MDA 100 feet, increase LP Cat C visibility ¼ mile, increase LNAV Cat B visibility ¼ mile, and Cat C visibility ½ mile, increase Circling Cat B visibility ¼ mile, and Cat C visibility ½ mile.
⚠ NA DME/DME RNP-0.3 NA. VDP NA with Ogden altimeter setting. Rwy 35 helicopter visibility reduction below ¾ SM NA.

MISSED APPROACH:
Climbing left turn to 7100 direct KONNE and hold.

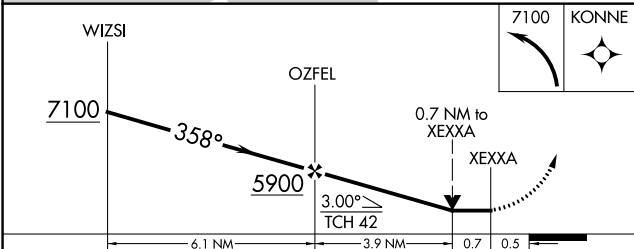
AWOS-3 135.075	SALT LAKE CITY APP CON 121.1	CLNC DEL 126.0	UNICOM 123.05 (CTAF) 0
--------------------------	--	--------------------------	----------------------------------



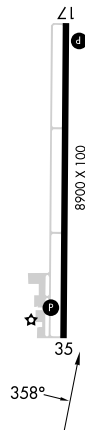
SW-4, 28 NOV 2024 to 26 DEC 2024

SW-4, 28 NOV 2024 to 26 DEC 2024

Procedure NA for arrivals on OGD VORTAC airway radials 302 CW 068.



ELEV 4230	TDZE 4230
MIRL Rwy 17-35 0	
REIL Rwys 17 and 35 0	



CATEGORY	A	B	C	D
LP MDA	4660-1	430 (500-1)	4660-1¼ 430 (500-1¼)	NA
LNAV MDA	4900-1	670 (700-1)	4900-1⅞ 670 (700-1⅞)	NA
CIRCLING	4900-1	670 (700-1)	5020-2¼ 790 (800-2¼)	NA