

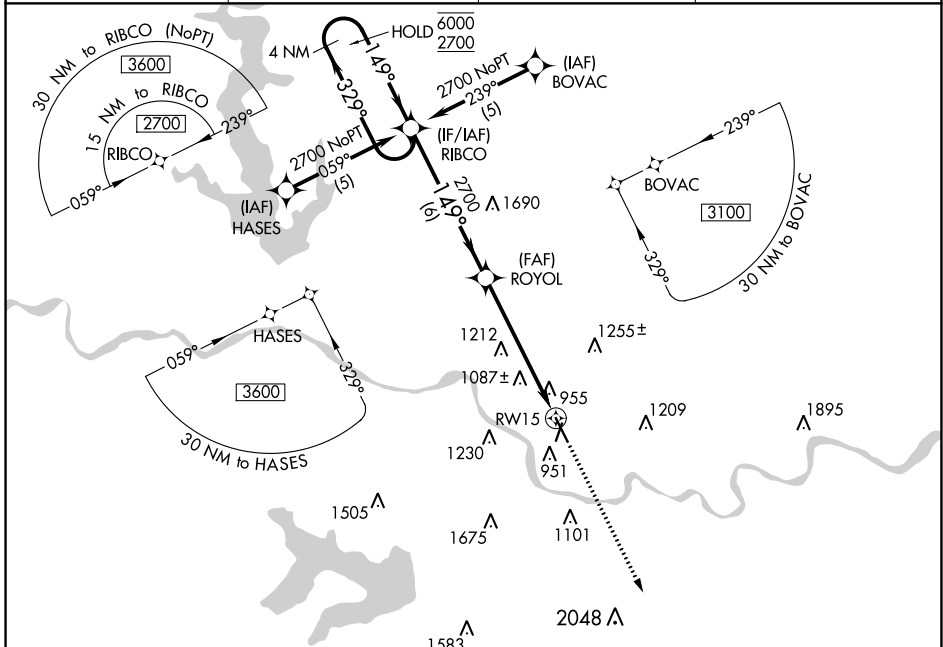
APP CRS 149°	Rwy Idg 5700
	TDZE 831
	Apt Elev 833

RNAV (GPS) RWY 15

LAWRENCE RGNL (LWC)

RNP APCH.	MISSED APPROACH: Climb to 3100 direct GOLEY and hold.
Rwy 15 Helicopter visibility reduction below 3/4 SM NA.	

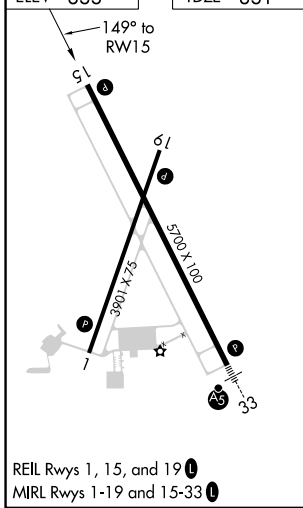
ASOS 121.225	KANSAS CITY CENTER 123.8 343.7	CLNC DEL 121.825	UNICOM 123.0 (CTAF) 0
------------------------	--	----------------------------	---------------------------------



NC-2, 28 NOV 2024 to 26 DEC 2024

NC-2, 28 NOV 2024 to 26 DEC 2024

ELEV 833	TDZE 831
-----------------	-----------------



REIL Rwy 1, 15, and 19
MIRL Rwy 1-19 and 15-33

4 NM Holding Pattern 6000 ← 329° 2700 149° →	RIBCO	ROYOL 2700	1.4 NM to RWY 15 3.05' TCH 45	RWY 15	3100 GOLEY
					6 NM 4.2 NM 1.4
CATEGORY	A	B	C	D	
LNAV MDA	1340-1	509 (600-1)	1340-1½ 509 (600-1½)	NA	
CIRCLING	1420-1 587 (600-1)	1480-1 647 (700-1)	1620-2¼ 787 (800-2¼)	NA	