

WAAS CH 93618 W02A	APP CRS 017°	Rwy Idg TDZE 372 Apt Elev 373
--	------------------------	---

RNAV (GPS) RWY 2

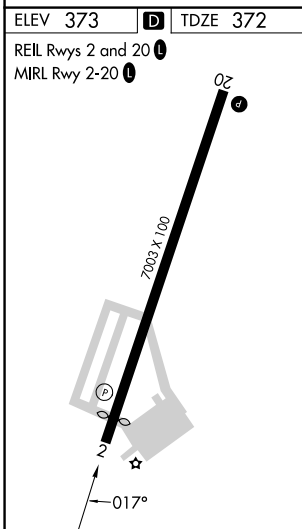
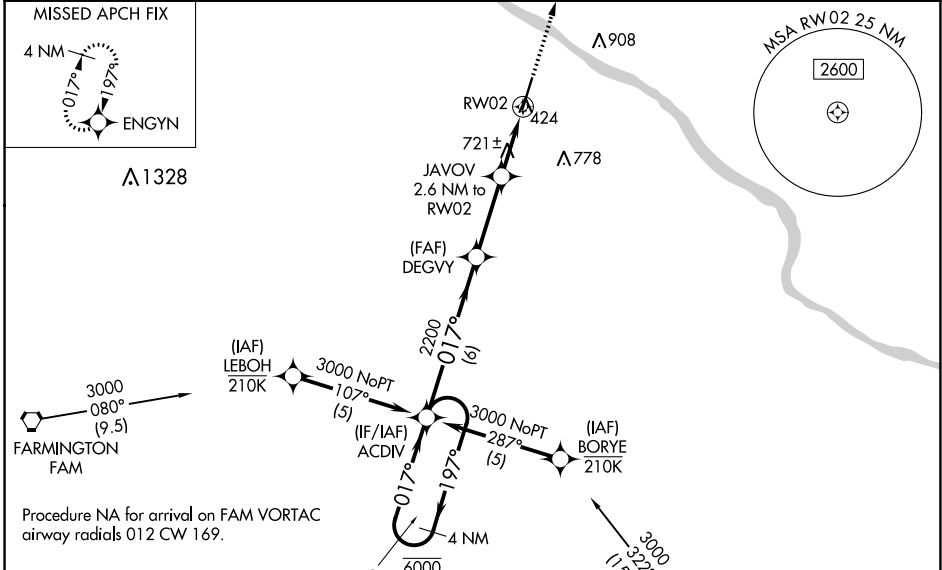
PERRYVILLE RGNL (PCD)

RNP APCH - GPS.

⚠ Rwy 2 helicopter visibility reduction below $\frac{3}{4}$ SM NA. Baro-VNAV and VDP NA when using CGI altimeter setting. For uncompensated Baro-VNAV systems, LNAV/VNAV NA below -15°C or above 54°C . When local altimeter setting not received, use CGI altimeter setting and increase LPV DA to 1223 feet and all visibility $\frac{1}{2}$ SM. Increase LNAV/VNAV DA to 1154 feet and all visibilities $\frac{1}{2}$ SM. Increase all MDAs 100 feet and LNAV visibility Cat C/D $\frac{1}{4}$ SM and Circling visibility Cat C $\frac{1}{4}$ SM.

MISSED APPROACH: Climb to 3000 direct ENGYN and hold.

AWOS-3PT 118.95	KANSAS CITY CENTER 127.475 346.275	UNICOM 122.8 (CTAF) 0
---------------------------	--	---------------------------------



4 NM Holding Pattern 6000 ← 197° 3000 → 017° GP 3.00° TCH 40	ACDIV	DEGVY	JAVOV 2.6 NM to RW02	3000	ENGYN
	2200 017° 2200 1240 1.8 NM to RW02 1.8 NM	2200 017° 2200 1240	2200 017° 2200 1240	2200 017° 2200 1240	3000 ↑
	6 NM	3 NM	0.8	1.8 NM	
CATEGORY	A	B	C	D	
LPV DA	1123-2		751 (800-2)		
LNAV/VNAV DA	1054-2		682 (700-2)		
LNAV MDA	980-1	608 (700-1)	980-1 $\frac{3}{4}$	608 (700-1 $\frac{3}{4}$)	
CIRCLING	980-1 607 (700-1)	1000-1 627 (700-1)	1260-2 $\frac{3}{4}$ 887 (900-2 $\frac{3}{4}$)	1260-3 887 (900-3)	

NC-3, 28 NOV 2024 to 26 DEC 2024

NC-3, 28 NOV 2024 to 26 DEC 2024