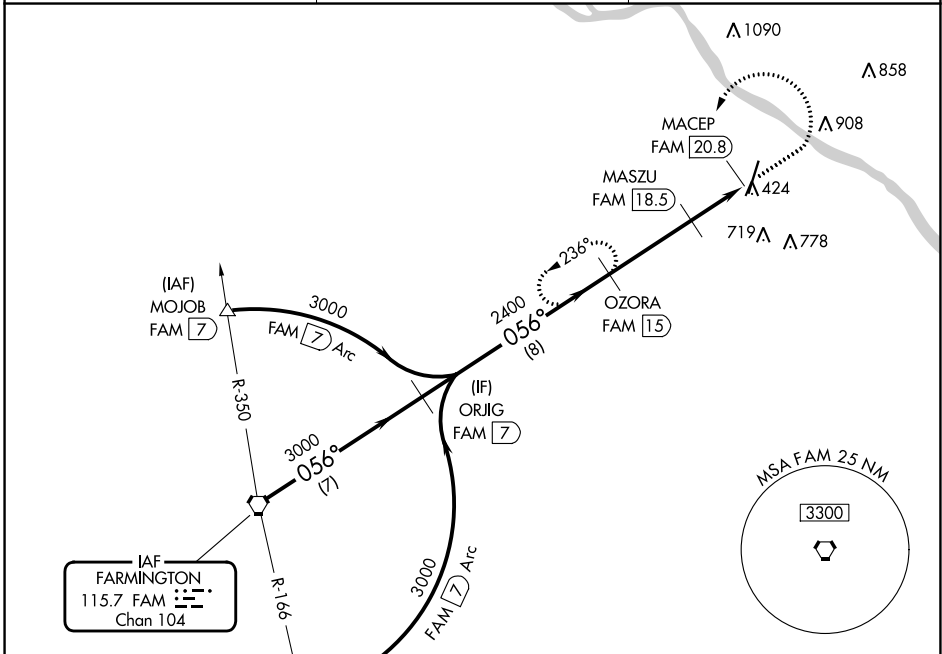


VORTAC FAM 115.7 Chan 104	APP CRS 056°	Rwy Idg TDZE Apt Elev	N/A N/A 372
---	------------------------	-----------------------------	--

VOR-A
PERRYVILLE RGNL (PCD)

▽ △	DME required.	MISSED APPROACH: Climb to 1500 then climbing left turn to 2400 on FAM VORTAC R-056 to OZORA/FAM 15 DME and hold.
----------------------	---------------	--

AWOS-3PT 118.95	KANSAS CITY CENTER 127.475 346.275	UNICOM 122.8 (CTAF) ①
---------------------------	--	--

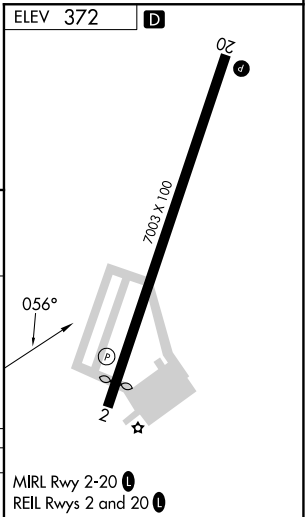
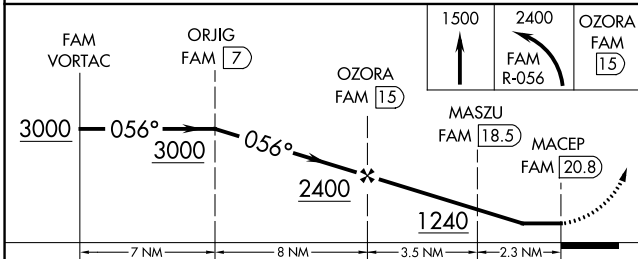


NC-3, 28 NOV 2024 to 26 DEC 2024

NC-3, 28 NOV 2024 to 26 DEC 2024

Procedure NA for arrival at FAM VORTAC on airway radials 012 CW 114.

△ 1589



CATEGORY	A	B	C	D	MIRA Rwy 2-20 ① REIL Rwy 2 and 20 ①
CIRCLING	1040-1	668 (700-1)	1260-2 ³ / ₄ 888 (900-2 ³ / ₄)	1260-3 888 (900-3)	