

LOC I-TVN 111.9	APP CRS 185°	Rwy Idg 9801
		TDZE 609
		Apt Elev 629

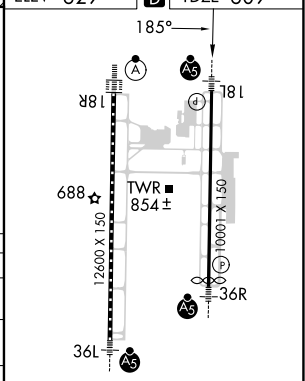
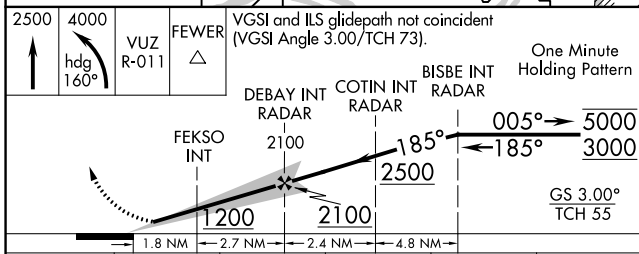
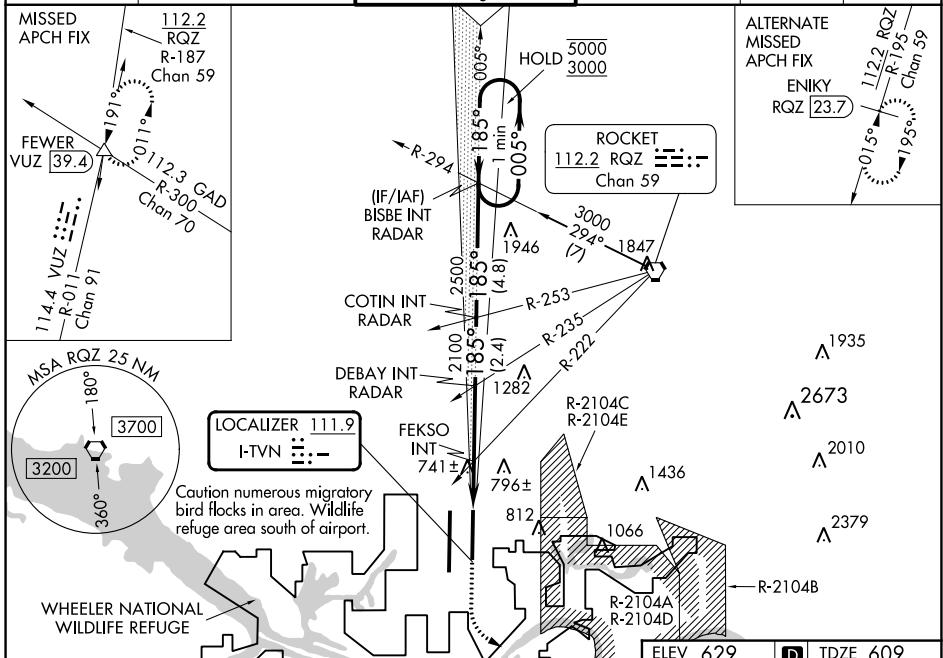
ILS or LOC RWY 18L

HUNTSVILLE INTL-CARL T JONES FLD (HSV)

Simultaneous approach authorized. Circling NA for Cat C/D/E east of Rwy 18L-36R. For inop ALS, increase S-ILS 18L Cat E visibility to RVR 4000 and S-LOC 18L Cat E visibility to 1 1/4 SM; FEKSO Fix minimums increase S-LOC 18L Cat E visibility to RVR 6000. * RVR 1800 authorized with use of FD or AP or HUD to DA.

MALS R
MISSED APPROACH: Climb to 2500 then climbing left turn to 4000 on heading 160° and VUZ R-011 to FEWER INT/VUZ 39.4 DME and hold.

ATIS 121.25	HUNTSVILLE APP CON * 125.6 354.1	HUNTSVILLE TOWER * 127.6 (CTAF) 0 350.35	GND CON 121.9 269.525	CLNC DEL 120.35	UNICOM 122.95
-----------------------	--	--	---------------------------------	---------------------------	-------------------------



CATEGORY	A	B	C	D	E
S-ILS 18L *	809/24 200 (200-1/2)				
S-LOC 18L	1200/24	591 (600-1/2)	1200-1 1/4	591 (600-1 1/4)	
CIRCLING	1200-1	571 (600-1)	1200-1 3/4	1240-2	1260-2 1/4
FEKSO FIX MINIMUMS (DUAL VOR RECEIVERS REQUIRED)					
S-LOC 18L	1000/24	391 (400-1/2)	1000/35	391 (400-3/4)	
CIRCLING	1160-1	531 (600-1)	1160-1 1/2	1240-2	1260-2 1/4
			531 (600-1 1/2)	611 (700-2)	631 (700-2 1/4)

TDZ/CL Rws 18R and 36L HIRL Rws 18L-36R and 18R-36L	FAF to MAP 4.5 NM					
	Knots	60	90	120	150	180
	Min:Seq	4:30	3:00	2:15	1:48	1:30

SE-4, 28 NOV 2024 to 26 DEC 2024

SE-4, 28 NOV 2024 to 26 DEC 2024